



What do we do?

We create networks



- Established 1996
- RouterOS created in 1997
- RouterBOARD created in 2002
- First MUM event in Prague 2006
- MUM in Indonesia had over 3100 people
- 25 events in 2017



LATVIA



екмурар, русск. фирм. давош наф. нефмаат. Расст. чет. ори. жан. 1901. *Travis*





Our products include

RouterOS

built and advanced for more than 20 years

RouterBOARD

Wireless outdoor, indoor, Ethernet routers

CRS

Switches with RouterOS

CSS

Switches with SwOS

no matter where you are

More than 175 MUM events around the world



MUM Live

www.youtube.com/mikrotik

Special thanks

SASTech Limited



Some of our latest products

1 Gbit
over wireless

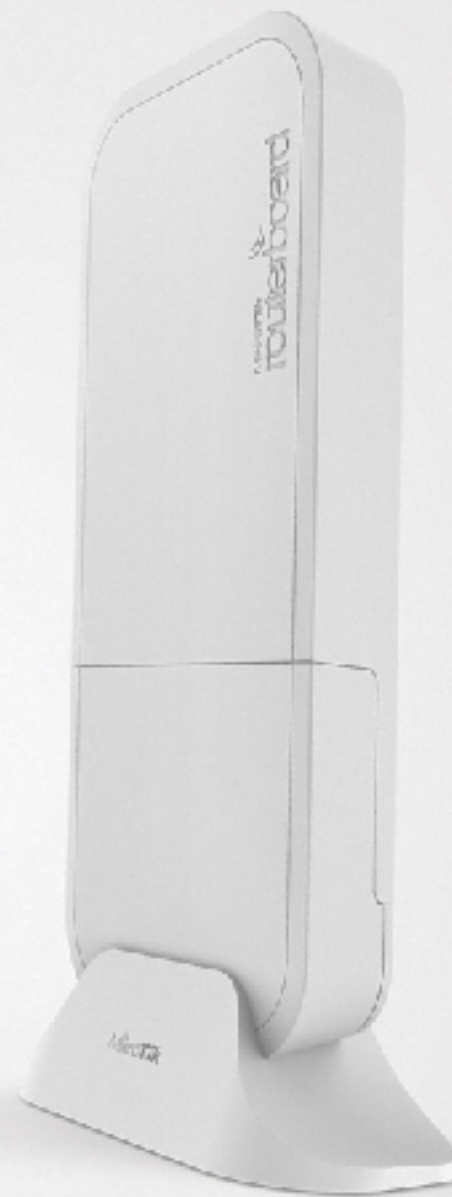
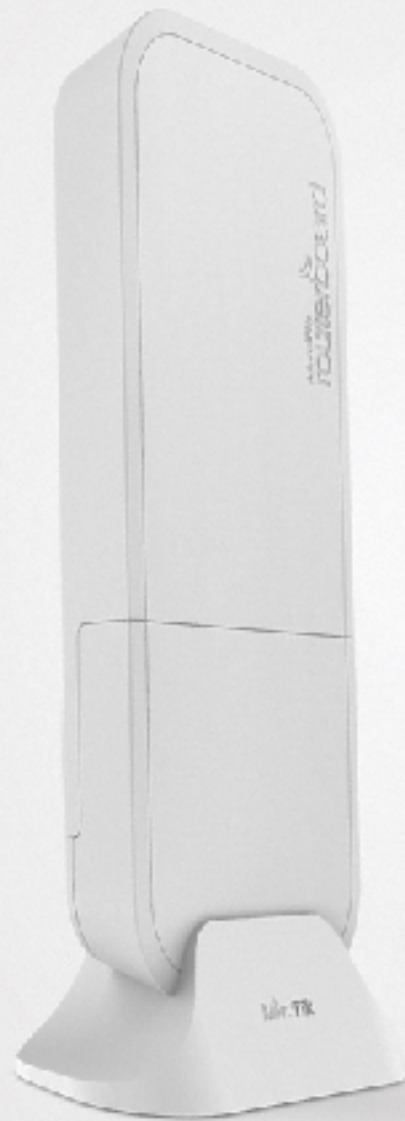
100m+
range

60GHz
radio

Gigabit
Ethernet

Paired
Secure Link
pre-configured

Powered by
VIA/Passive
PoE, DC Jack

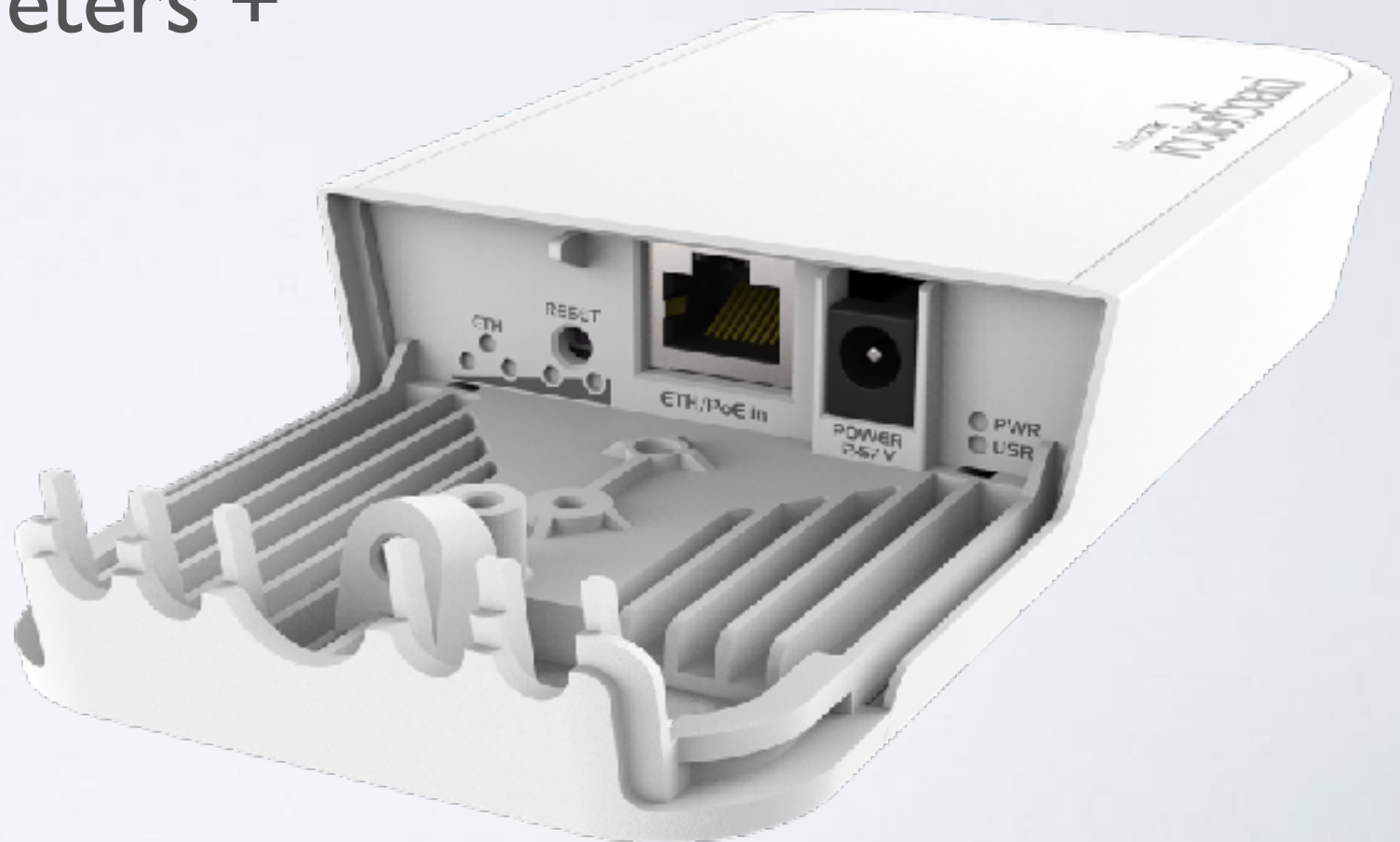


MikroTik

Wireless Wire

Wireless Wire

- 1 Gbps full duplex without wires
- Now for distance 200 meters +
- 60 GHz beam-forming
- Paired Secure Link
Preconfigured
- \$198 kit



WIRELESS WIRE DISH

Two LHG60G devices for long range 1 Gbit

LHG 60G

- 1 Gbit full duplex (wire speed)
- Works in 60 GHz spectrum
- Familiar LHG design
- Quad-core ARM CPU
- Low cost and low weight
- Targeted for longer 1500 meters and more!
- Kit price \$298



LtAP mini

- 2.4 GHz AP in a rugged case
- miniPCle for LTE
- Built-in GPS
- Optional external antennas for GPS and LTE
- Serial port
- Perfect for outdoor and mobile applications



Available now

- 129\$ with LTE module
- 89\$ without module



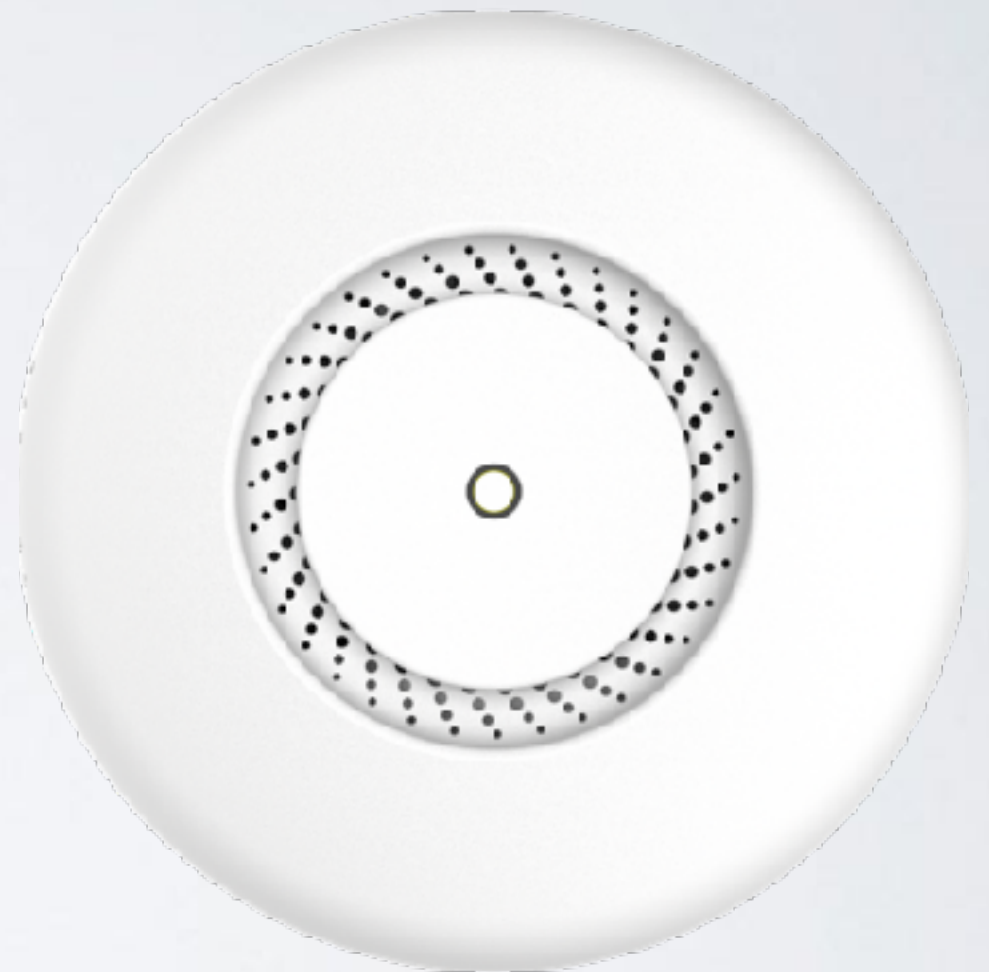
hAP ac²

- Gigabit ports
- Dual chain, dual band
- Wall mount or stand
- Same small size as Lite model



cAP ac

- Dual band, dual chain
- Gigabit port for 802.11ac speeds
- Two Ethernet ports
- PoE out
- Two cases included

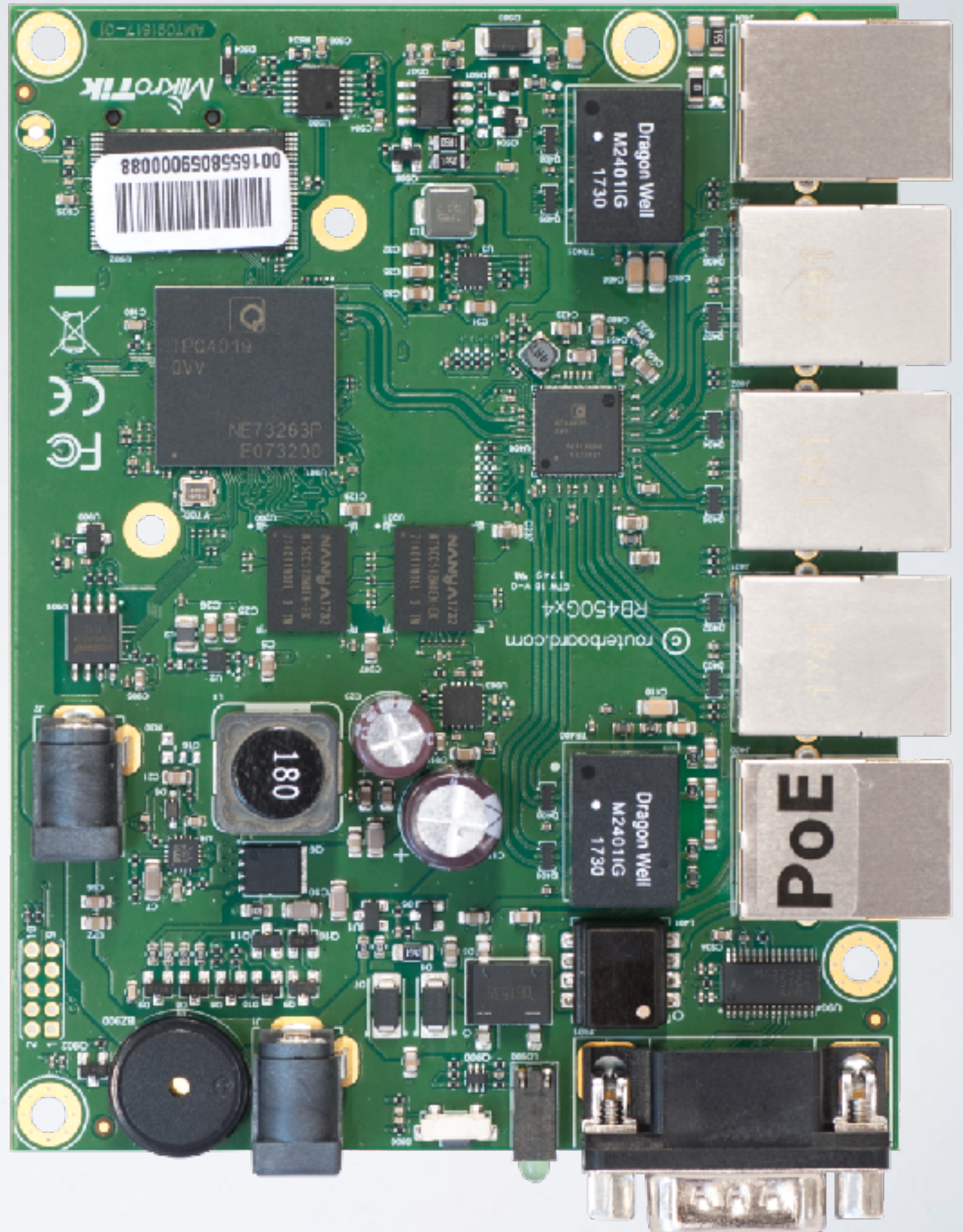






450Gx4

- Quad core 716MHz
- 1GB of RAM
- IPSec encryption
- PoE out on Ether5
- microSD
- 10V - 57V input by two power jacks
- \$99



heX S

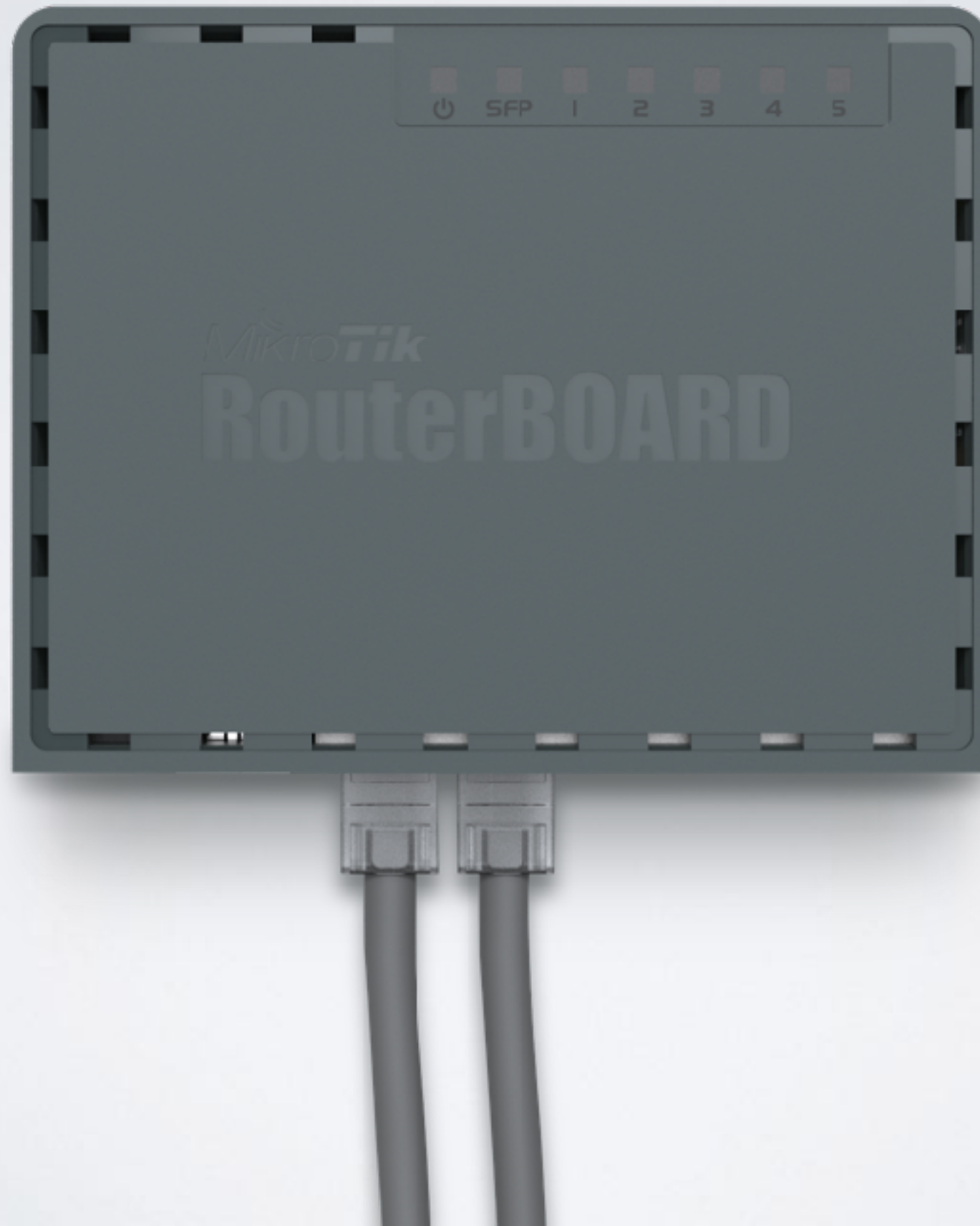
- Dual-core 880 MHz
- 256MB of RAM
- Full size USB
- PoE out on Ether5
- 1.25Gbps SFP
- 10V - 57V input and PoE
- \$69



heX S



heX S



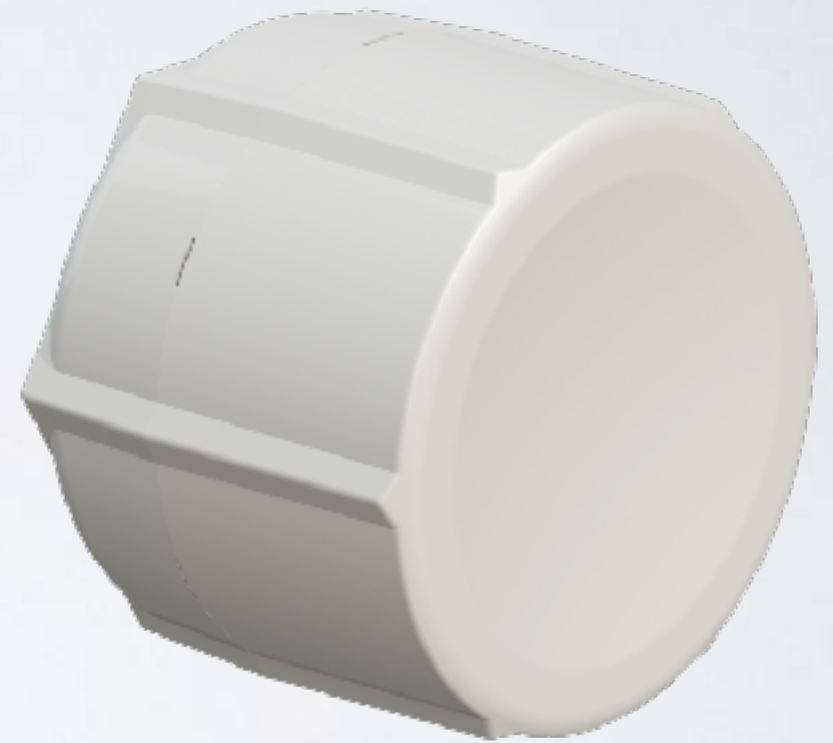
SXTsq Lite 2

- 2GHz CPE
- Slim design
- Low price



SXT LTE kit

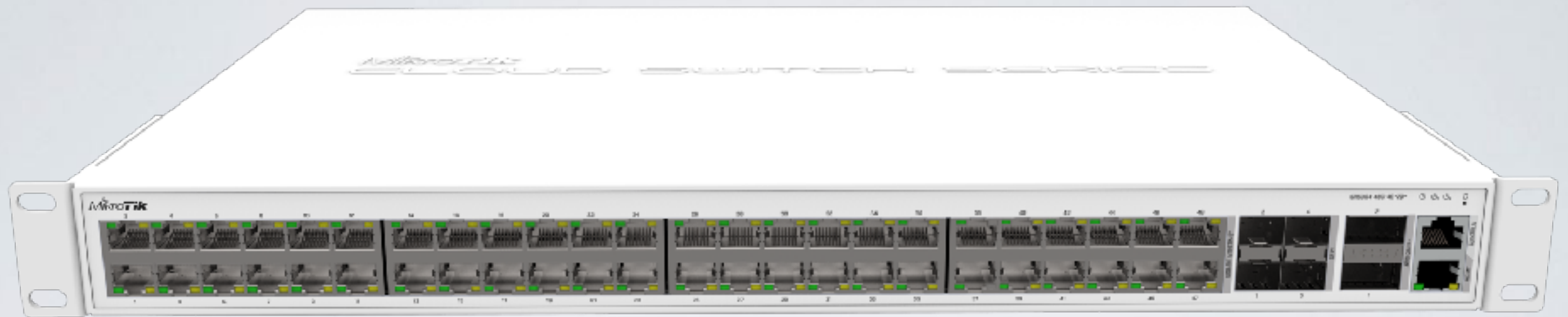
- Dual SIM
- LTE card built in
- 2x Ethernet
- PoE output on #2
- International LTE bands
1,2,3,7,8,20,38 and 40



LDF 2

- 2GHz CPE
- Mounts in regular satellite dish
- Ultra long range





CRS354-48G-4S+2Q+

- 48x Gigabit ports
- 4x SFP+ for 10Gbit connections
- 2x QSFP ports for 40Gbit connections

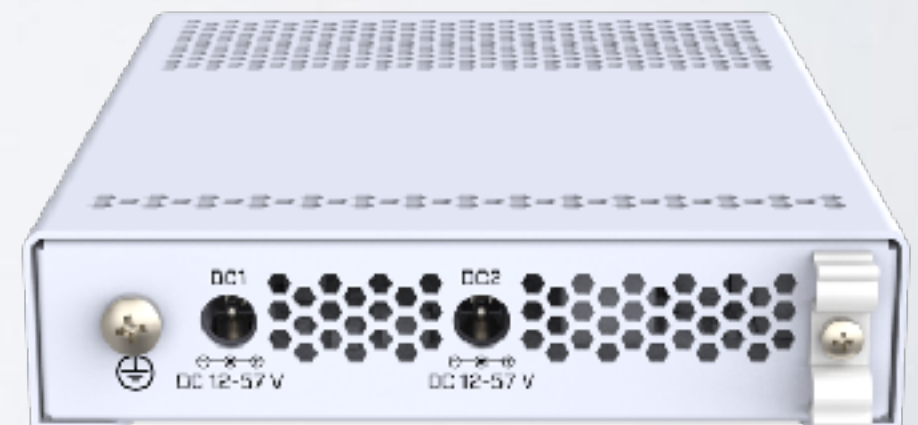


CRS354-48P-4S+2Q+

- 48x Gigabit ports with PoE out
- 4x SFP+ for 10Gbit connections
- 2x QSFP+ ports for 40Gbit connections

CRS305-1G-4S+IN

- 4x SFP+ ports
- 1x Gigabit Ethernet
- Metallic enclosure
- Dual DC jacks



mANTBox2 12s

- 2 GHz sector antenna
- 12 dBi
- RouterBOARD built in



mANT 5o LTE

- Special 5 dBi LTE antenna
- Omnidirectional design
- Use with wAP, LtAP
- High speed internet in remote locations



CRS309-1G-8S+PC

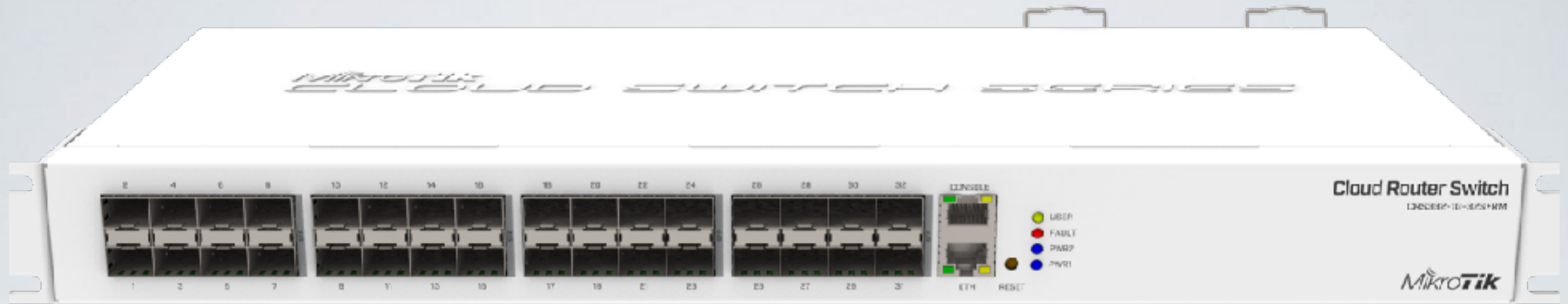
- 8x SFP+ ports
- 1x Gigabit Ethernet
- Silent case





CRS328-4C-20S-4S+RM

- 20x SFP ports
- 4x ETH/SFP combo ports
- 4x SFP+ ports
- Dual PSU



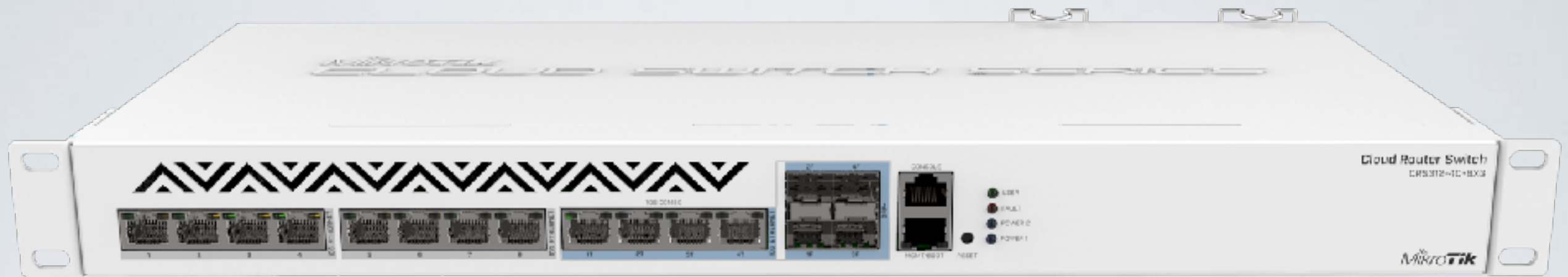
CRS332-32S+RM

- 32x SFP+ ports
- RJ45 console and ETH management
- Dual PSU

PWR-Line AP

- Small AP directly plugs into socket
- Makes 100Mbit links with others like it
- Build WiFi network without special cabling
- Auto pairs with new devices





CRS312-4C+8XG

- 8x 10G Ethernet ports
- 4x 10G Ethernet / 10G SFP+ combo ports
- Console and management ports
- Dual PSU

Need help?

- Ask a local distributor
- Hire MikroTik consultant
- Read the manual wiki.mikrotik.com
- Email support@mikrotik.com
- Attend a training class or join and Academy class in a University

After the MUM

- All presentations - mum.mikrotik.com
- Videos - youtube.com/mikrotik
- License for paid and voucher registrations will be sent by an e-mail



MikroTik

The image shows the MikroTik logo in a dark gray, 3D-style font. The word "Mikro" is in a standard sans-serif typeface, while "Tik" is in a bold, italicized sans-serif typeface. Above the letter 'i' in "Mikro", there are three curved lines that suggest motion or signal waves. The entire logo is positioned on a light gray surface that reflects the logo, creating a subtle mirror effect.