

The logo features the word "MIKRO" in a white, italicized, sans-serif font. Above the letter "O" is a white graphic element consisting of two curved lines that resemble a stylized sun or a signal. To the right of "MIKRO" is the word "TIK" in a white, bold, italicized, sans-serif font.

MIKRO **TIK**

BRASIL
NOVEMBRO 2019

A long, empty office hallway with desks and chairs, overlaid with a red-to-purple gradient. The text "WHAT DO WE DO?" is centered in white, uppercase letters.

WHAT DO WE DO?

MORE THAN 200 PRODUCTS



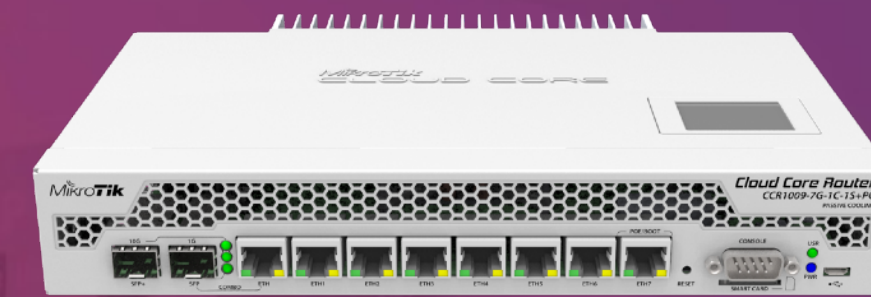
HOME



OUTDOOR



SOHO



CARRIER

A stylized world map with a color gradient from red to purple. A white dot is placed on the map to indicate the location of Latvia in the Baltic region of Europe. The map features a grid of latitude and longitude lines.

LATVIA



- Established in 1996
- RouterOS created in 1997
- RouterBOARD created in 2002

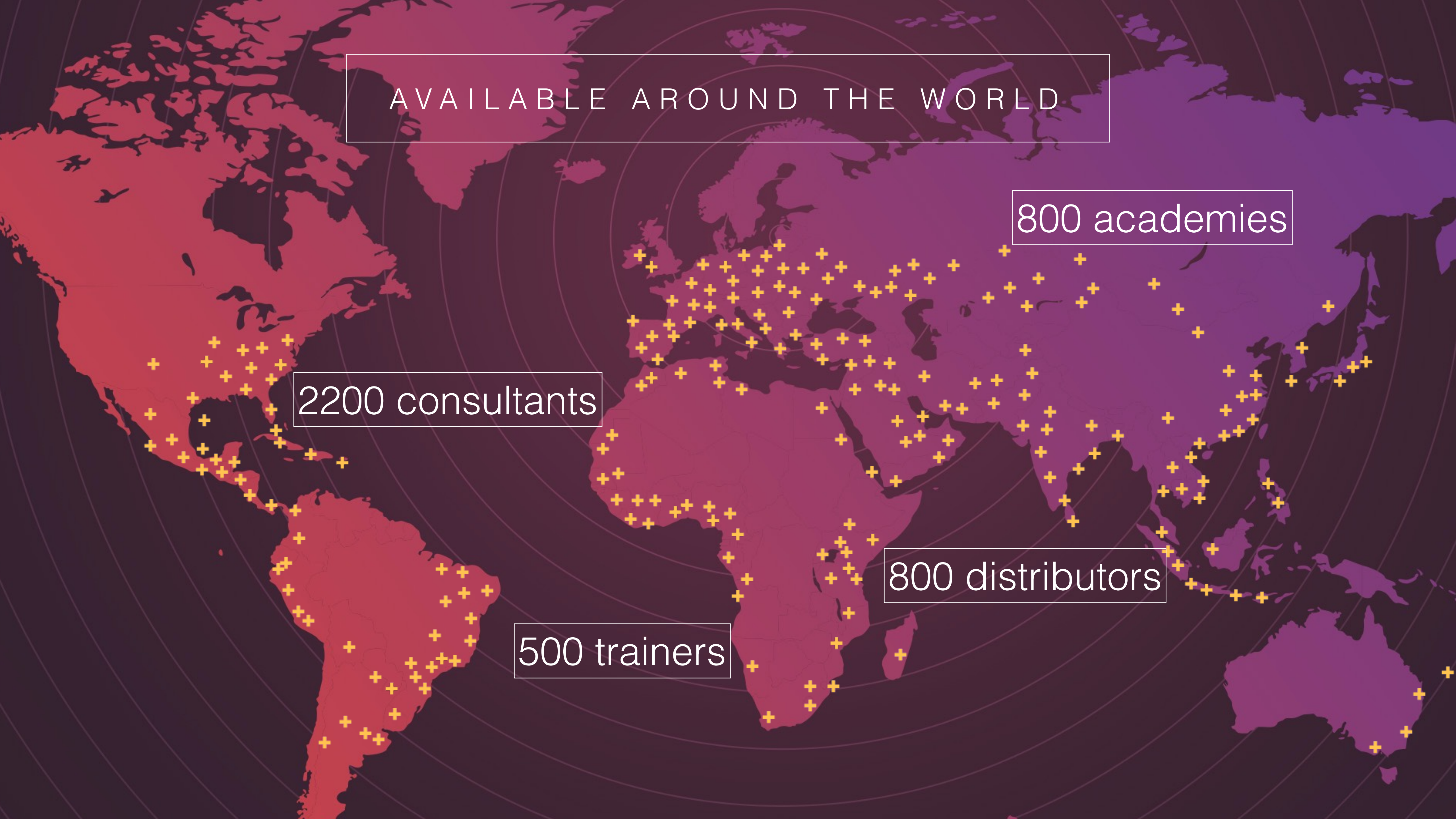
AVAILABLE AROUND THE WORLD

800 academies

2200 consultants

800 distributors

500 trainers

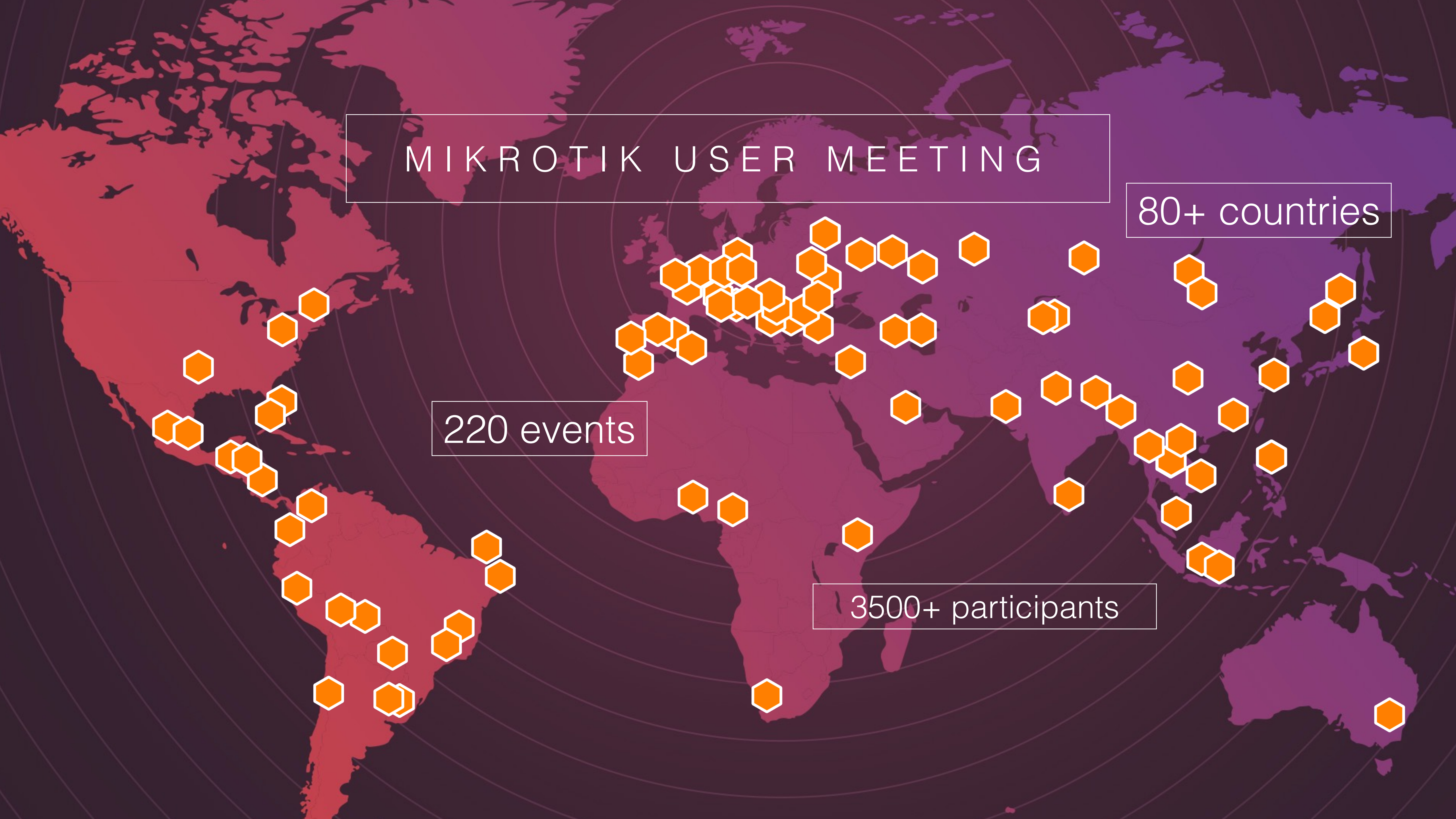


MIKROTIK USER MEETING

80+ countries

220 events

3500+ participants



Conference

- 4 staff members from MikroTik
- Schedule **mt.lv/agenda**
- Almoço (com bilhetes) 12:00, downstairs
- Sorteio (amanhã)

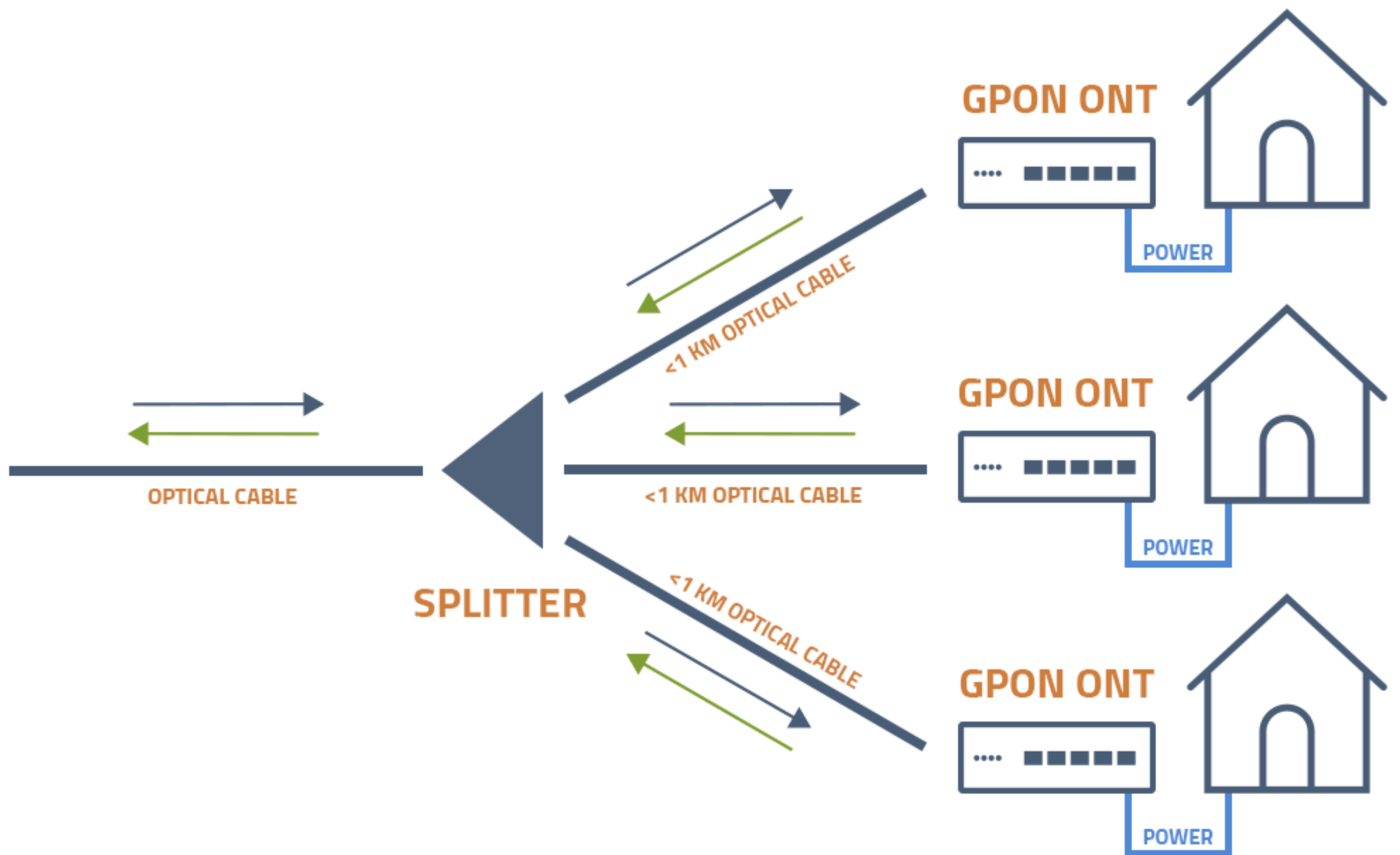
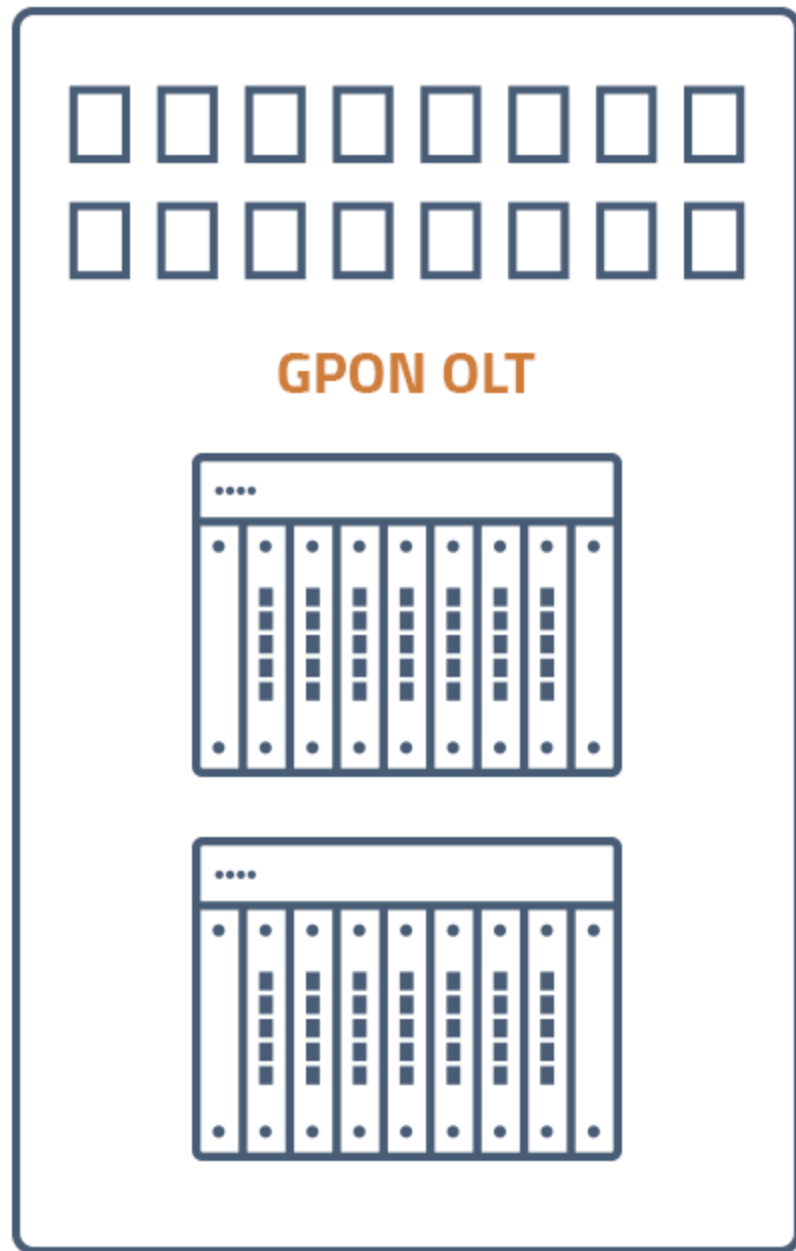
Wireless

- SSID: **Recanto Eventos**
- User: **MUM**
- Password: **2019**
- Plan: **MUM**

A network switch rack with a red-to-purple gradient overlay. The rack contains several network switches, with a prominent white switch in the center. The text is centered over the rack.

Live video stream
youtube.com/mikrotik

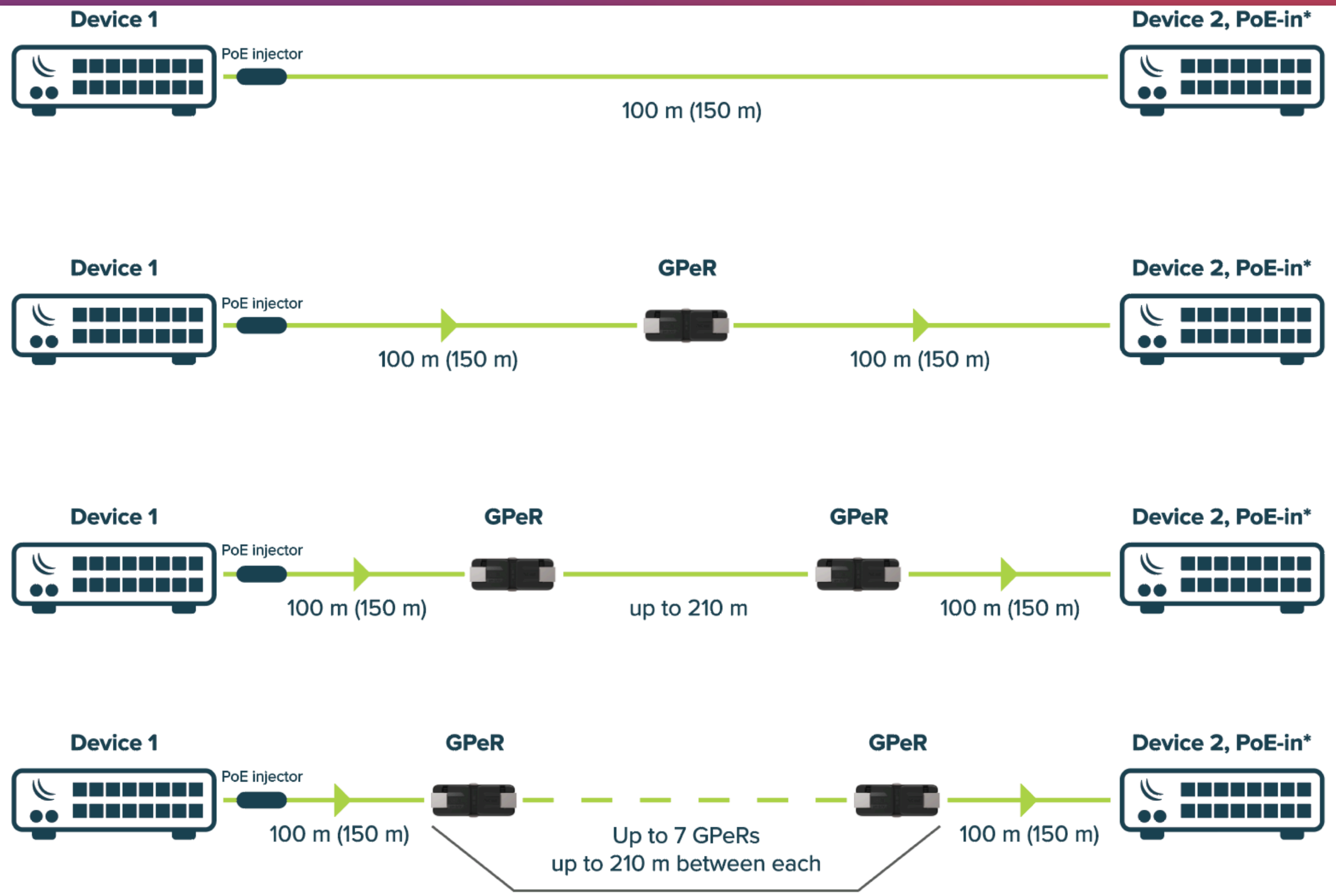
CENTRAL OFFICE

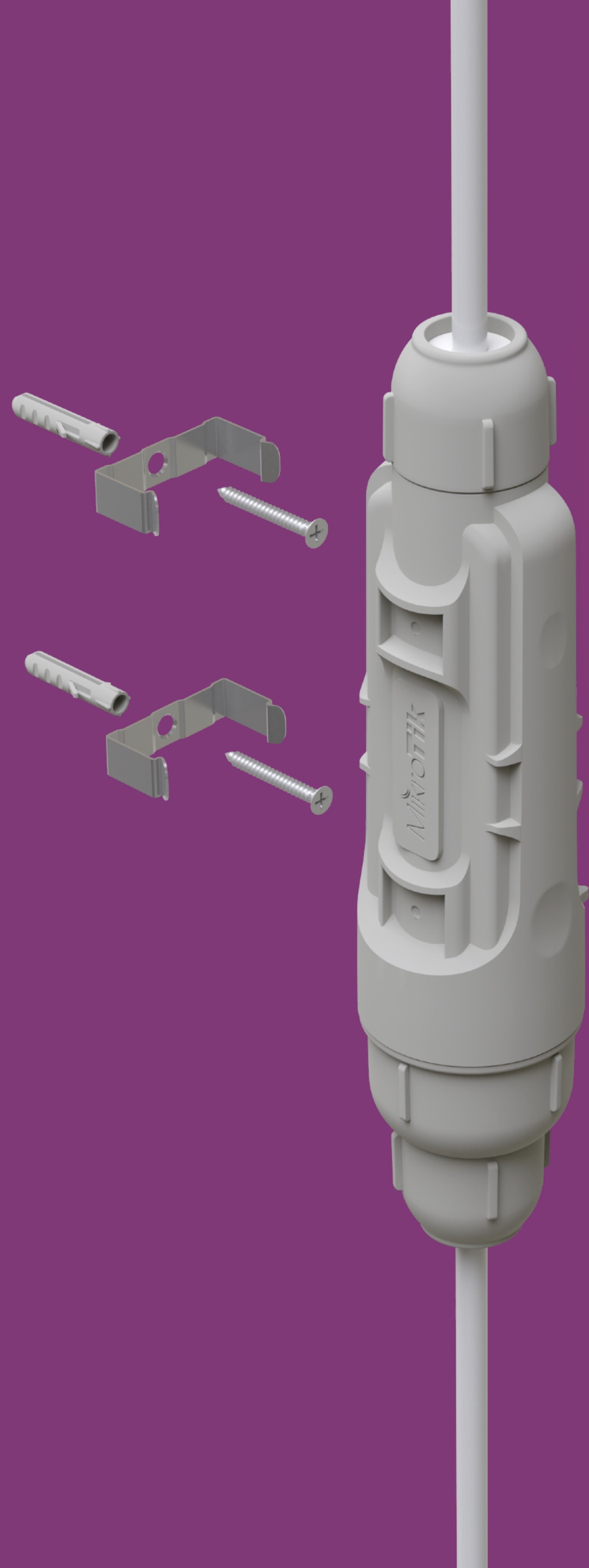




GPER

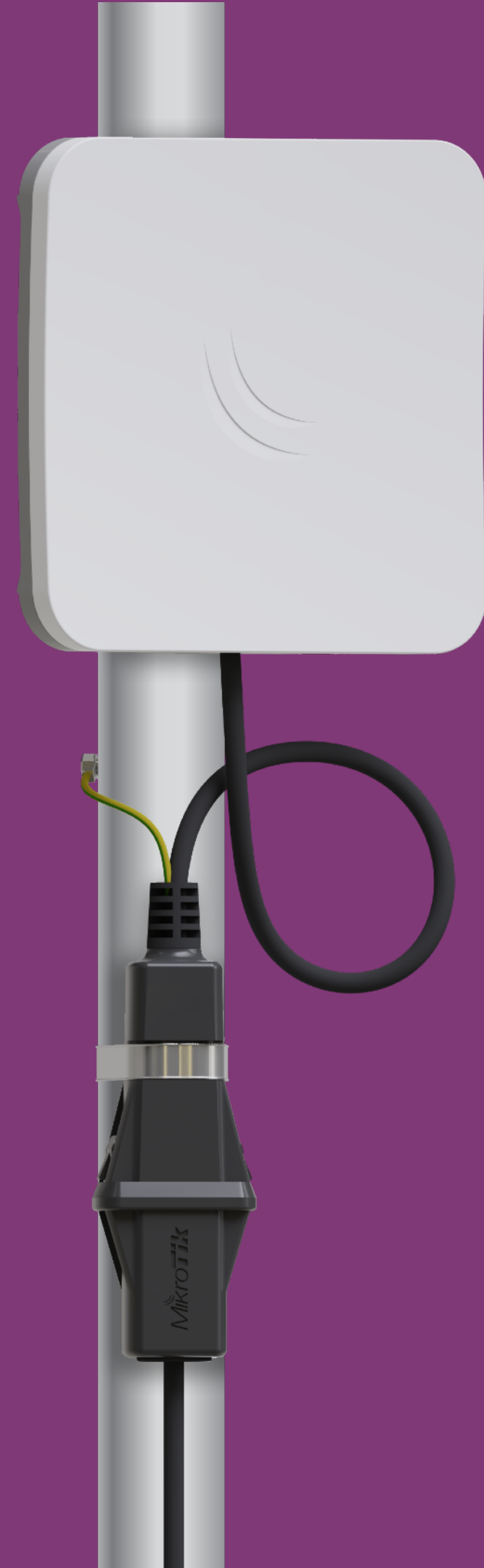
- Gigabit passive Ethernet repeater
- Ethernet extender with PoE passthrough
- 24-57 V supported
- Integrated 15 kV ESD protection
- ~2.5 V loss per 100 meters, allows up to 1.5 km long cable with PoE





GPER Case

- Outdoor enclosure for GPeR units
- Extend Ethernet network anywhere
- Has IP68 protection



GESP

- Gigabit Ethernet surge protector
- Up to 30 kV
- Tower, server room or both



GPEN

- Gigabit passive Ethernet network
- GPEN11 - PoE injector, can be mounted securely
- GPEN21 - smart injector, also adds SFP for fiber to copper functionality

netPower



CRS318

15x PoE in

1x PoE out

16x PoE out



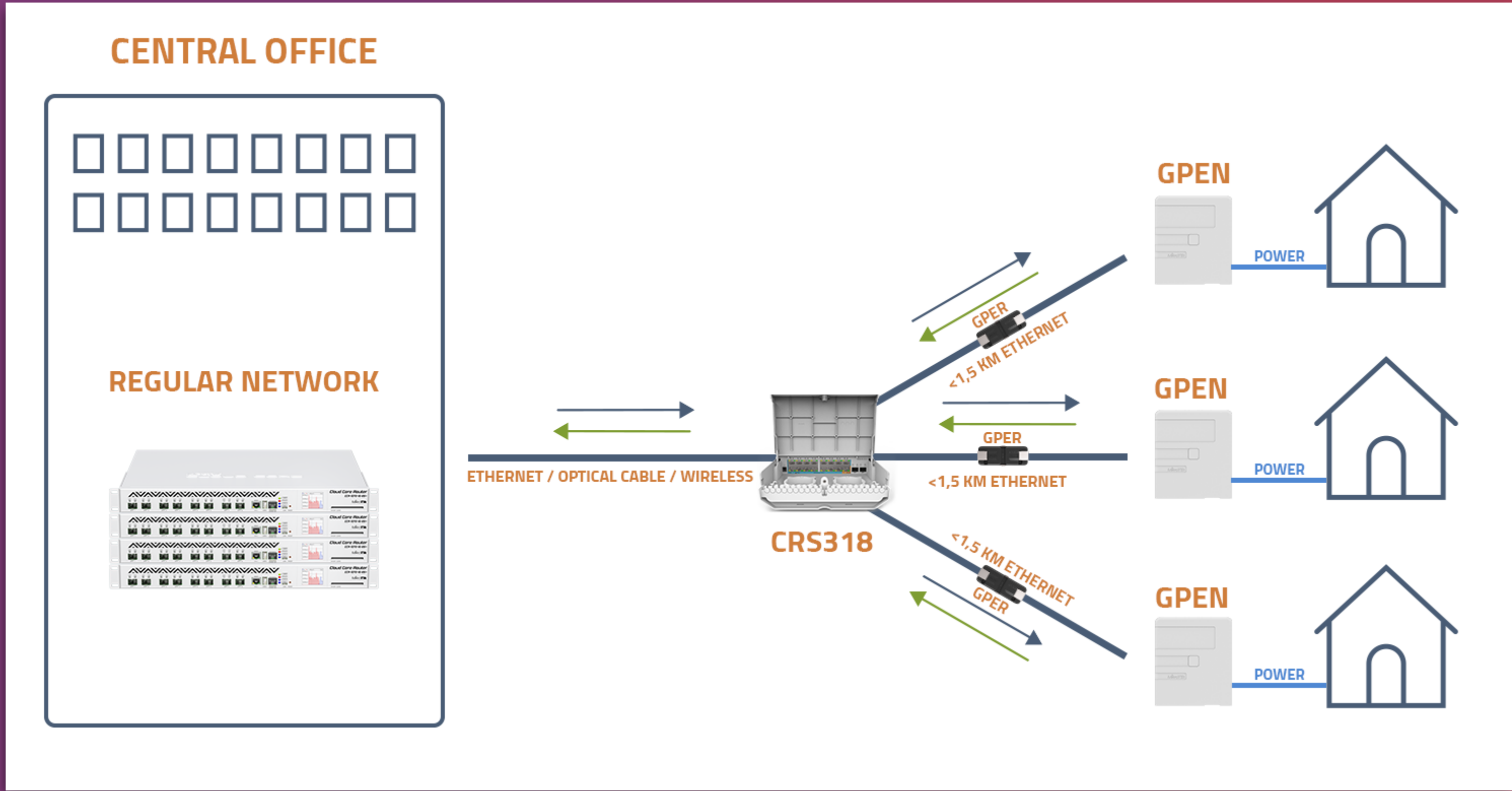
CSS610

7x PoE in

1x PoE out

8x PoE out

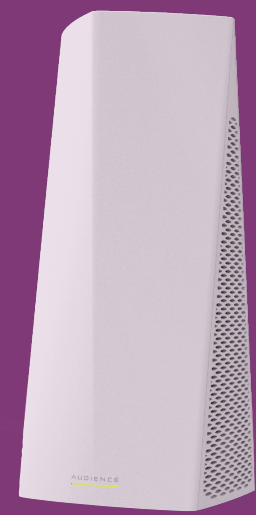
GIGABIT PASSIVE ETHERNET NETWORK





AUDIENCÉ

AUDIENCÉ



Audience

- Tri-band 802.11ac home AP with mesh function
- Secondary 5 GHz interface pairs with other units
- Two Gigabit Ethernet ports
- LTE model with SIM slot and CAT6 modem

YOUR WI-FI HAS AN AUDIENCE

Who said you should hide your router in the closet? Bring it out in the open and enjoy faster and smoother signal in your whole home. A router for those who value both beauty and functionality.



wAP ac kit



- (2.4/5 GHz), dual-band
- 2 Gigabit Ethernet interfaces
- miniPCIe slot for LTE
- CPU 4 cores



LtAP

- Three SIM and two miniPCIe slots
- GPS (GNSS), built-in 2.4GHz WiFi, multiple power sources, USB, console
- SMA connector for GPS
- Optional SMA connectors for other antennas

R11e-LTE6



- Category 6 LTE modem, carrier aggregation (CA) support
- Up to 300 Mbps downlink and 50 Mbps uplink
- Can be used with any RouterOS device

LTE6 kits

LtAP



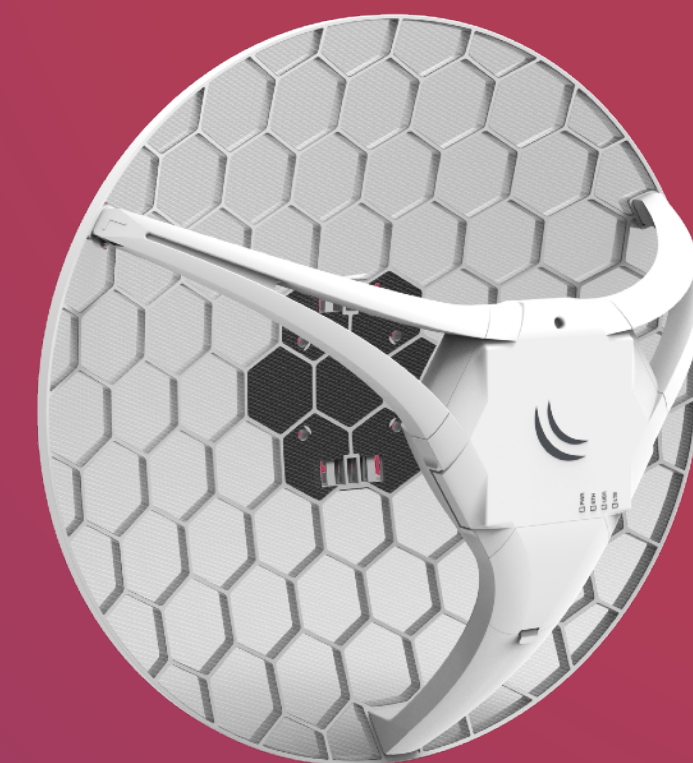
wAP ac



SXT



LHG



InterCell - LTE base station



- LTE base station for WISP or mobile operator
- LTE bands 38+39, 10 W output power
- Up to 192 clients
- Can use together with MikroTik LTE CPE's

Cube Lite60



- Replacement for SXTsq Lite60
- Same price, 4x the distance
- Up to 800 meters (PtP)
- Up to 500 meters (PtMP)

60 GHz device family

wAP 60Gx3 AP

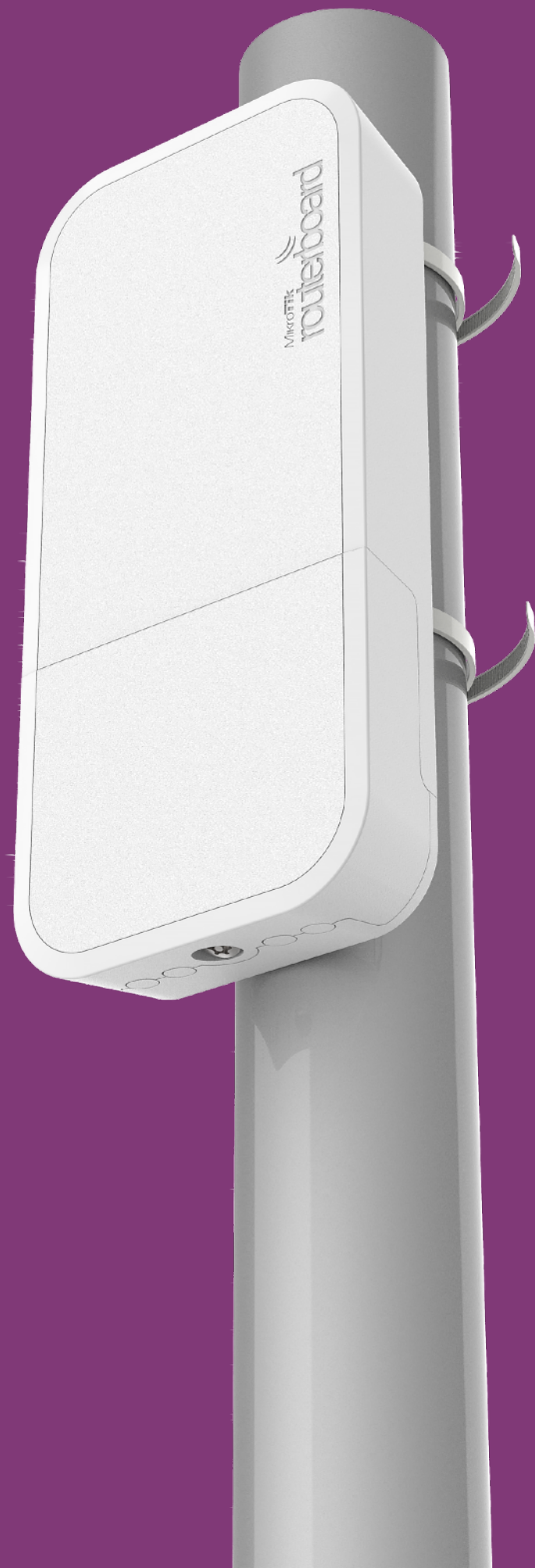


Wireless Wire Dish



Cube Lite60

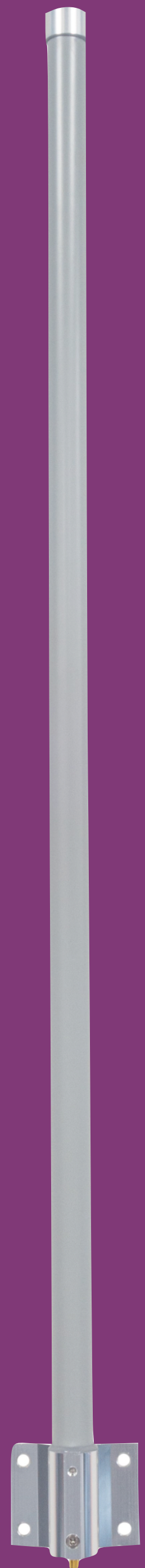




LoRa kit

- wAP 2 GHz AP with LoRa gateway
- UDP packet forwarder to any public or private network server
- Integrated 2.5 dBi antenna with external antenna support
- LoRa mPCIe Gateway module available

LoRa accessories



- Card separately
- 1 meter 6.5 dBi omni antenna

PWR Line

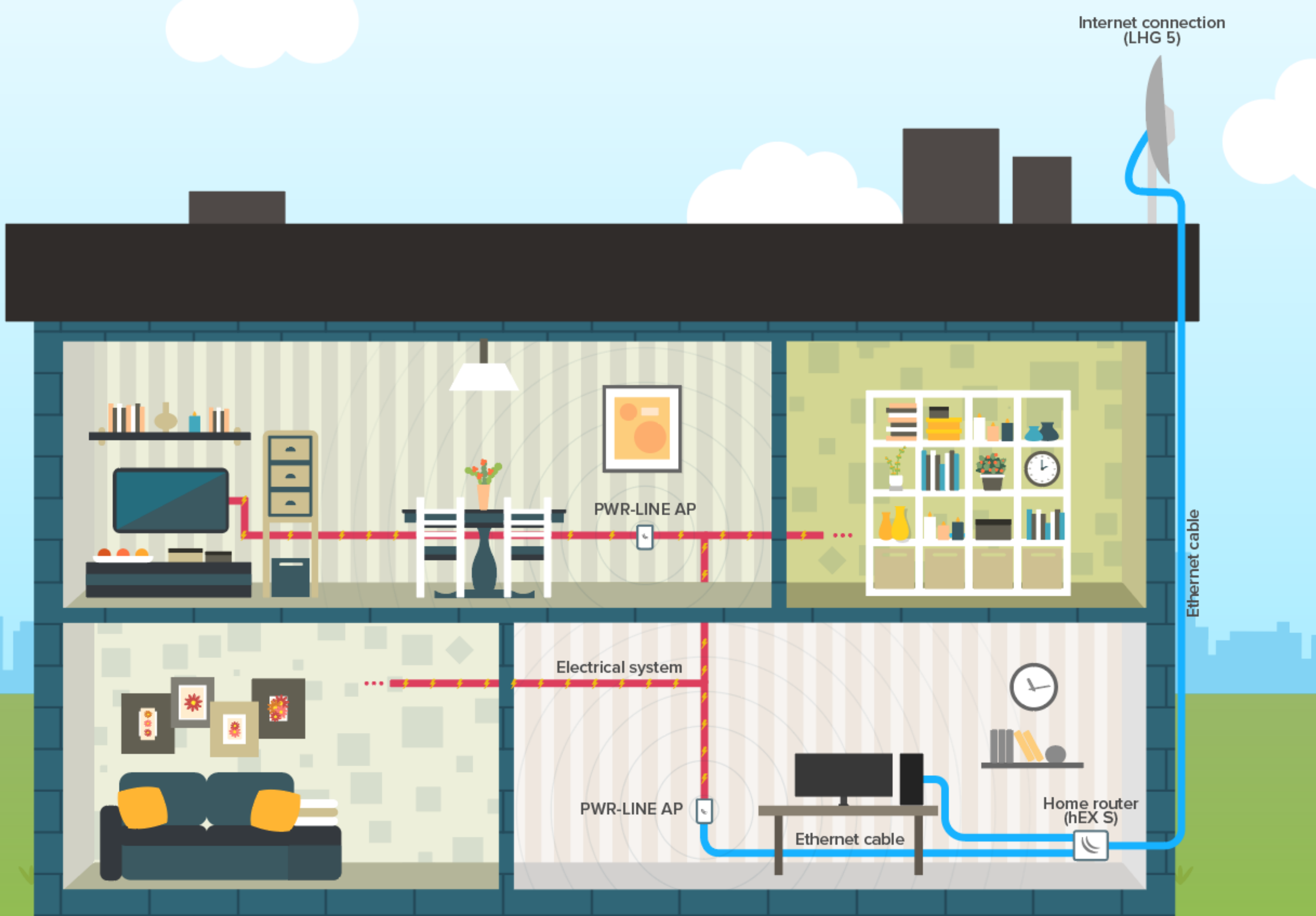


- Adds PowerLine function via microUSB
- Supported by the new hAP lite & mini and mAP family devices
- Connect to PWR Line AP or other routers over the electrical line

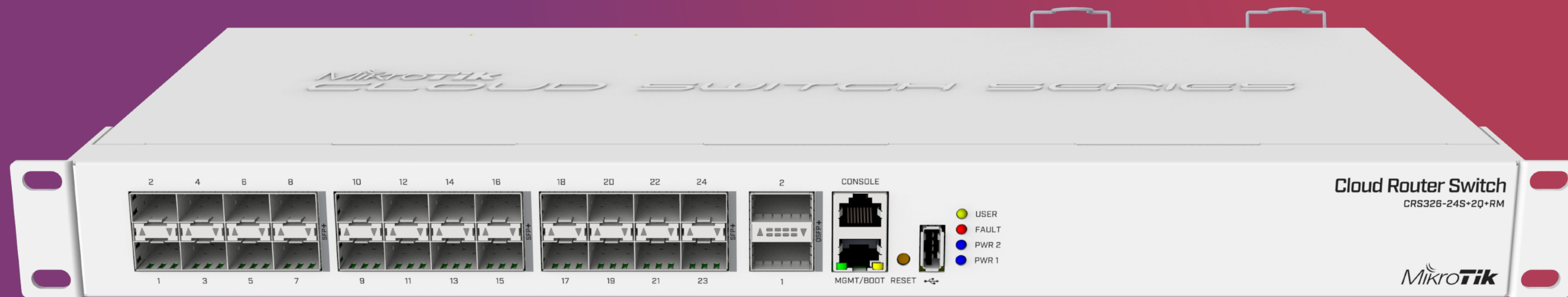
PWR Line PRO



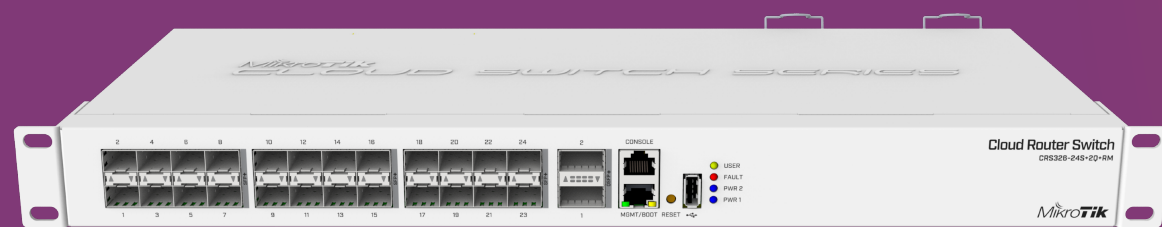
- Power-line bridge
- Up to 600 Mbps
- Supports HomePlug AV2
- PoE out



CRS326-24S+2Q+RM



CRS326-24S+2Q+RM



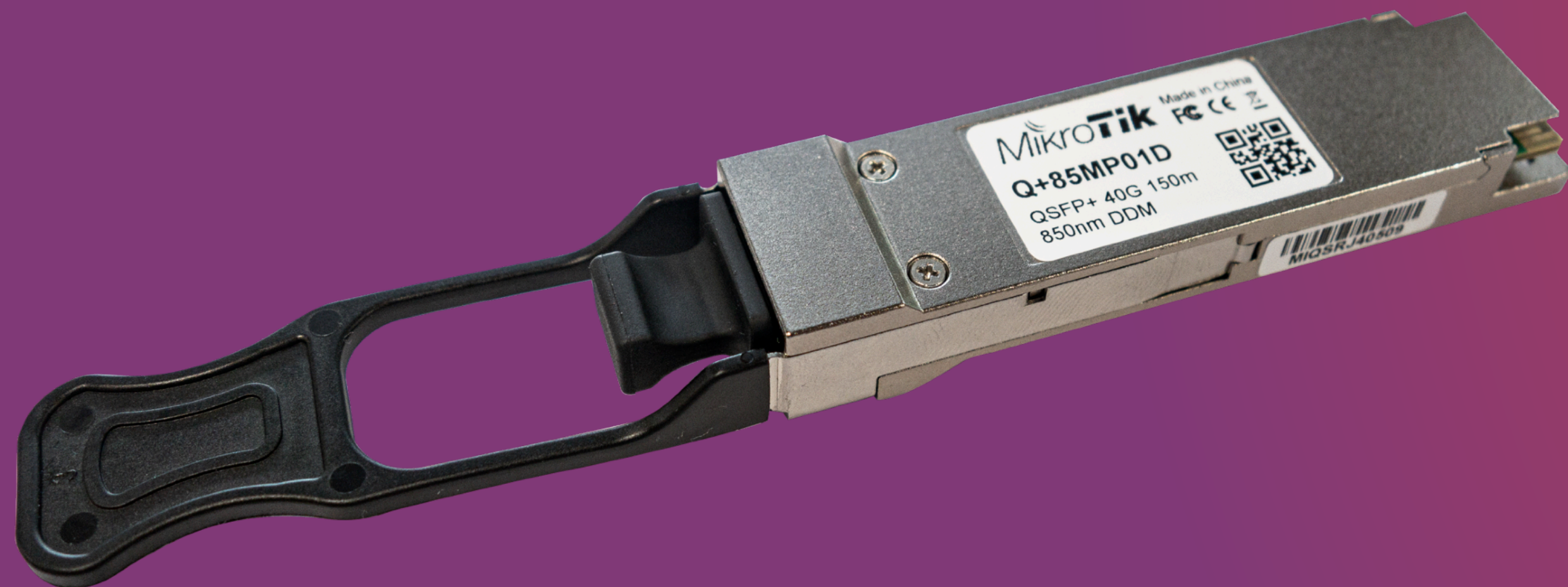
- 24x SFP+ (10G ports)
- 2x QSFP+ (40G ports)
- Console, USB
- Dual PSU

40G accessories

- Q+85MP01D
- Q+BC0003-S+
- Q+DA0001



Q+85MP01D



- 40 Gbps
- 100 m on OM3 and 150 on OM4
- Built-in digital diagnostic functions

Q+BC0003-S+



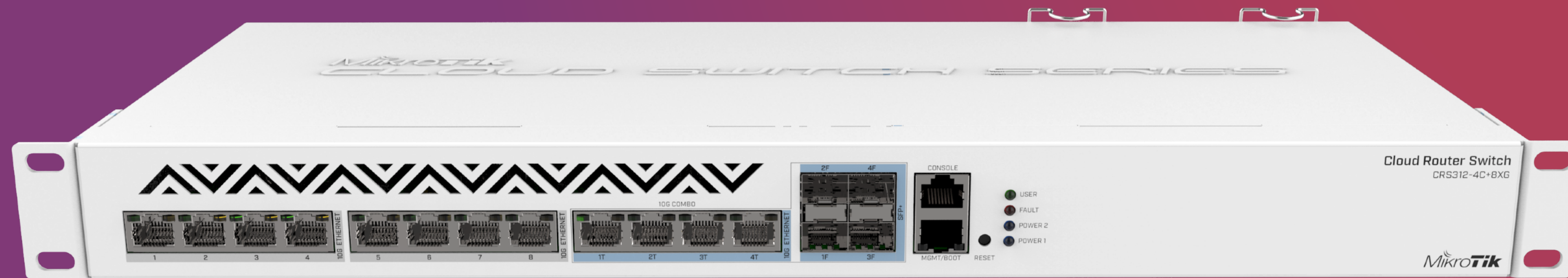
- 40 Gbps to 4x 10 Gbps
- Works between MikroTik devices
- 3 meters

Q+DA0001



- 40 Gbps to 40 Gbps
- 1 meter

CRS312-4C+8XG-RM

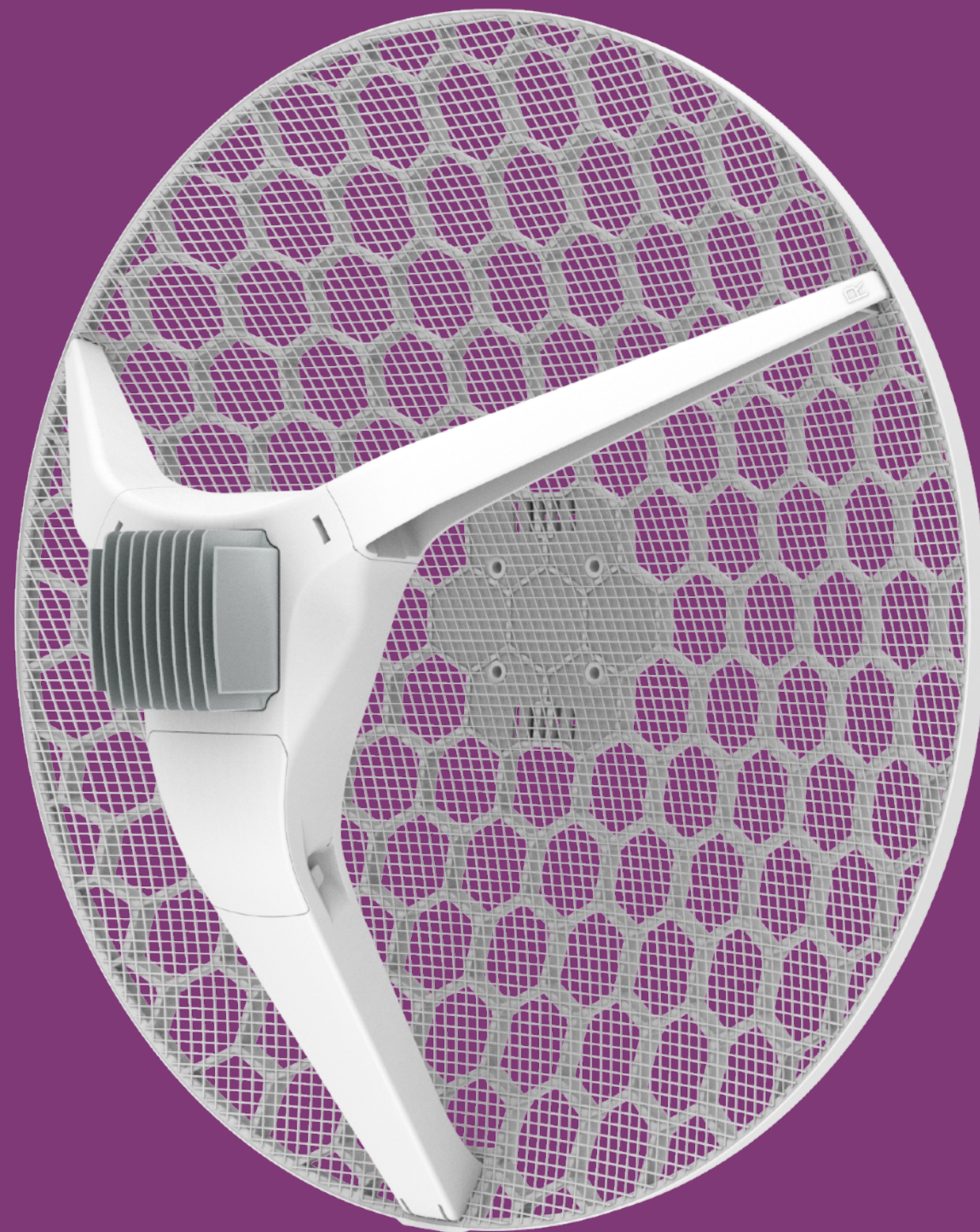


CRS312-4C+8XG-RM



- 8x 10G Ethernet ports
- 4x 10G Ethernet / 10G SFP+ combo ports
- Console and management ports
- Dual PSU

LHG XL 52 ac



- Dual band
- Gigabit Ethernet and SFP
- High throughput, no downtime connections
- Very high gain and output power



QM-X

- Designed for popular SXTsq series
- Horizontal and vertical alignment



MQS

- Mobile quick setup
- Administrators friend
- Manage Ethernet only devices from phone over WiFi
- Can be powered with a power bank
- PoE out voltage 12 V

CCR updates



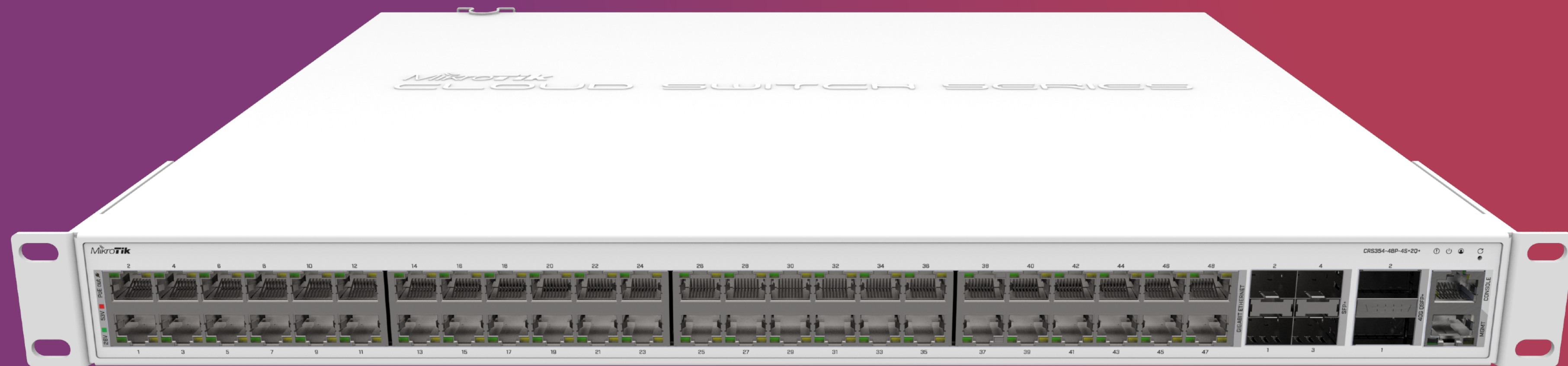
- All CCR 16-core and 36-core models now have a dual PSU for redundancy
- Full size USB port
- Improved PSU design
- 48 V PSU available separately

mUPS PRO

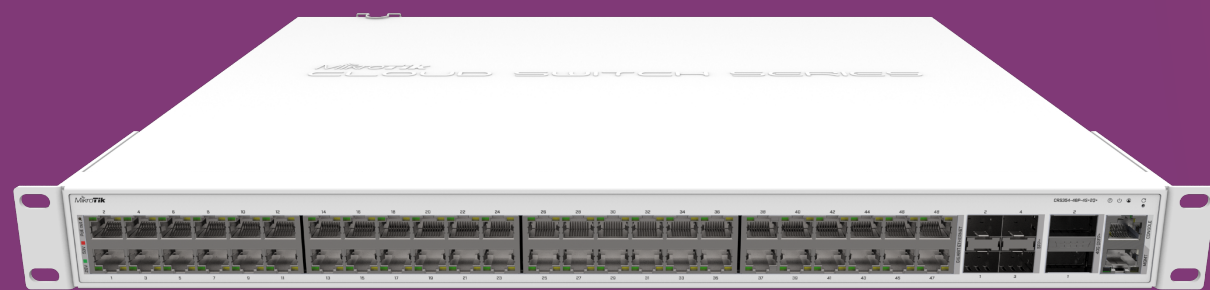


- Same form factor as the mUPS
- 12 V/24 V battery support
- 24 V/48 V PoE out support
- Managed through a web interface

CRS354

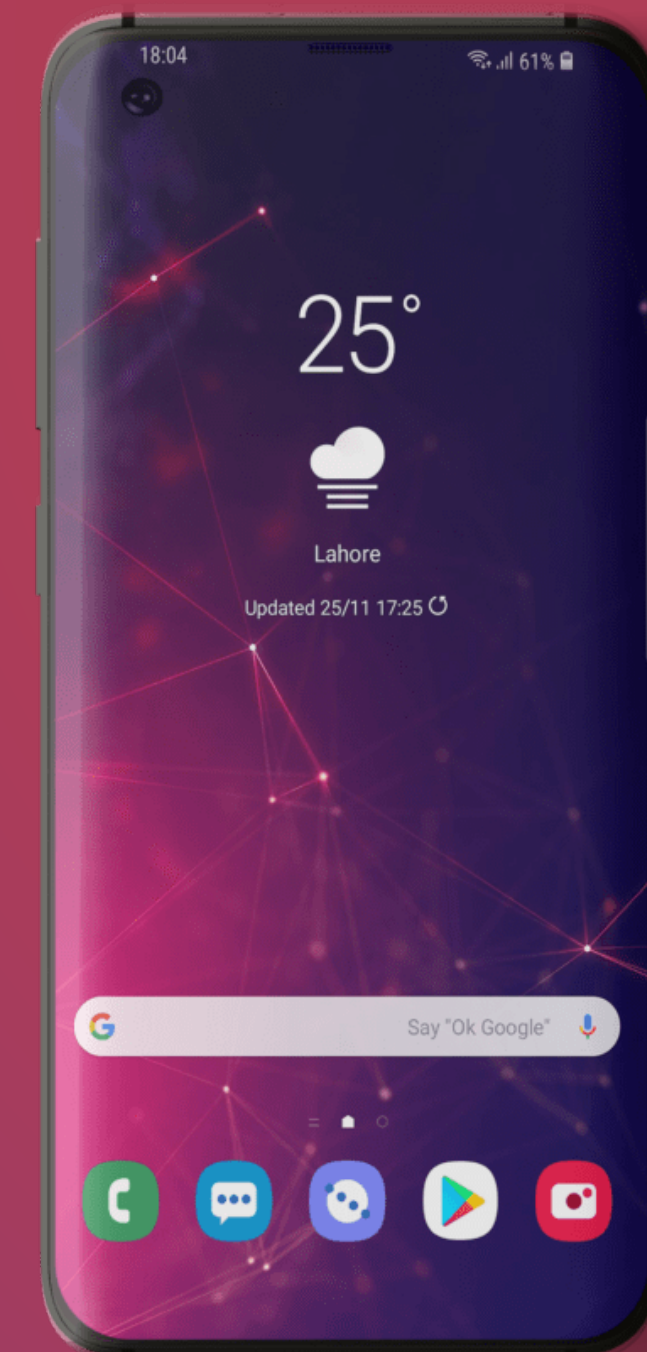


CRS354



- 48x Gigabit ports
- 4x SFP+ ports
- 2x QSFP+ ports
- 48x PoE out port version

MikroTik app for mobile



News



Newsletter #92 | November 2019

In this newsletter

read about

- New CAT6 products
- Cube Lite60
- Linus Tech Tips
- MUM Europe 2020
- Military-grade MikroTik
- Upcoming MUM

MikroTik CAT6 product line

The sweet spot of high-speed LTE is here!



SCAN ME

mt.lv/news92

MikroTik news

Email privacy settings

News and product announcements

Security announcements

Public event promotion (MUM, Trainings, etc)

Any other unspecified subject

We will send you only emails in categories you have opted to receive.

To perform and maintain our mutual business relations, supply goods and services, realize our legitimate interests, We are entitled to notify and You will also receive notifications and/or emails according to our [Principles of processing personal data](#).

Save email privacy settings

- mt.lv/news

- Subscribe for the latest news



MikroTik and 5G



MikroTik RouterOS v7 Beta

- 7.0beta3 released for testing
- For 5G and other modems
- Available on MikroTik download page

The image features a stylized world map in shades of red and purple, overlaid with a grid of latitude and longitude lines. The Microtik logo is centered in white. It consists of a stylized white arc above the word "Microtik", where the "i"s are lowercase and the "o" and "t" are uppercase. The "t" has a distinctive design with three horizontal bars.

Microtik