



MUM Europe  
April 2018



What do we do?

We create networks





- Established 1996
- RouterOS created in 1997
- RouterBOARD created in 2002
- First MUM event in Prague 2006
- MUM in Indonesia had over 3100 people
- 25 events in 2017



Iceland

Finland

Sweden

Russia

Norway

Estonia

Denmark

Ireland

United Kingdom

Netherlands

Belgium

Germany

Luxembourg

Poland

Belarus

Czech Republic

Ukraine

France

Switzerland

Liechtenstein

Austria

Slovakia

Moldova

Hungary

Romania

Georgia

Armenia

Monaco

San Marino

Bosnia and Herzegovina

Serbia

Montenegro

Bulgaria

Portugal

Andorra

Spain

Italy

Vatican City

Macedonia

Albania

Greece

Turkey

Syria







викторина, курсовый доклад на тему: Развитие культуры  
Ленина. Третья









Our products include



RouterOS

built and advanced for more than 20 years

RouterBOARD

Wireless outdoor, indoor, Ethernet routers

CRS

Switches with RouterOS

CSS

Switches with SwOS

no matter where you are



# More than 175 MUM events around the world





STAFF

Look for MikroTik staff in the red shirts



# Schedule

Today	
9:00	Presentations
12:45	Lunch with tickets
14:15	Presentations
Tomorrow	
17:00	Lottery

[mt.lv/agenda](http://mt.lv/agenda)

# WiFi

SSID: **MUM**

Password: **mikrotik**



# MUM Live

[www.youtube.com/mikrotik](http://www.youtube.com/mikrotik)

Some of our latest products



1Gbit  
over wireless

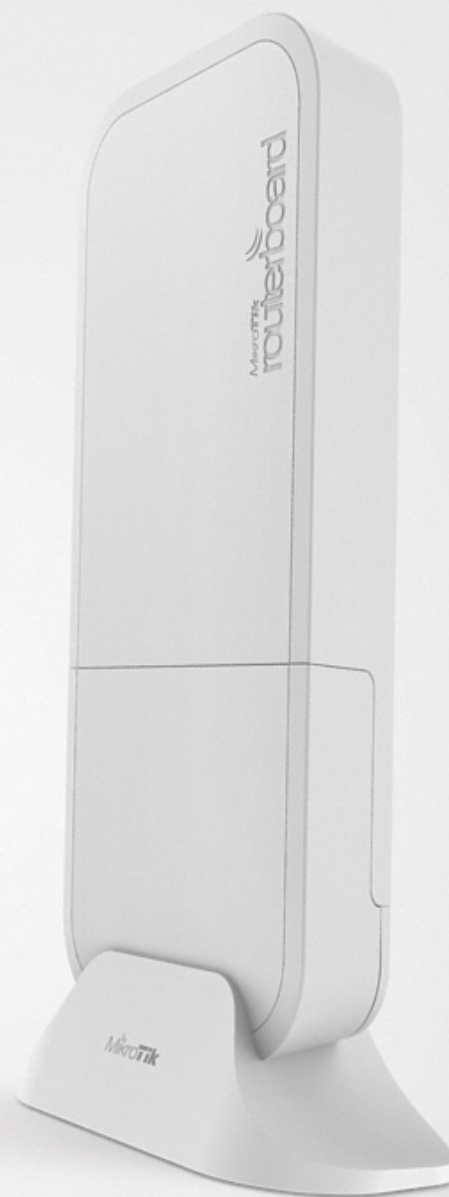
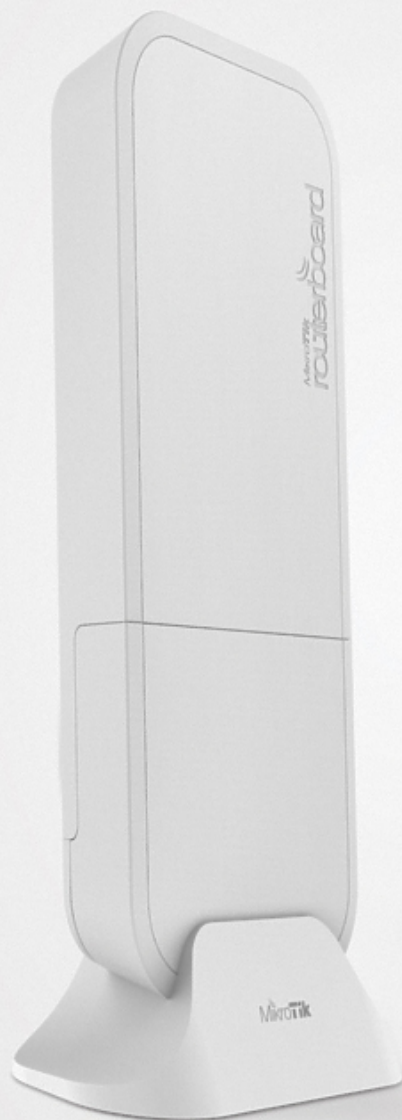
100m+  
range

60GHz  
radio

Gigabit  
Ethernet

Paired  
Secure Link  
preconfigured

Powered by  
AF/AT/Passive  
PoE, DC jack

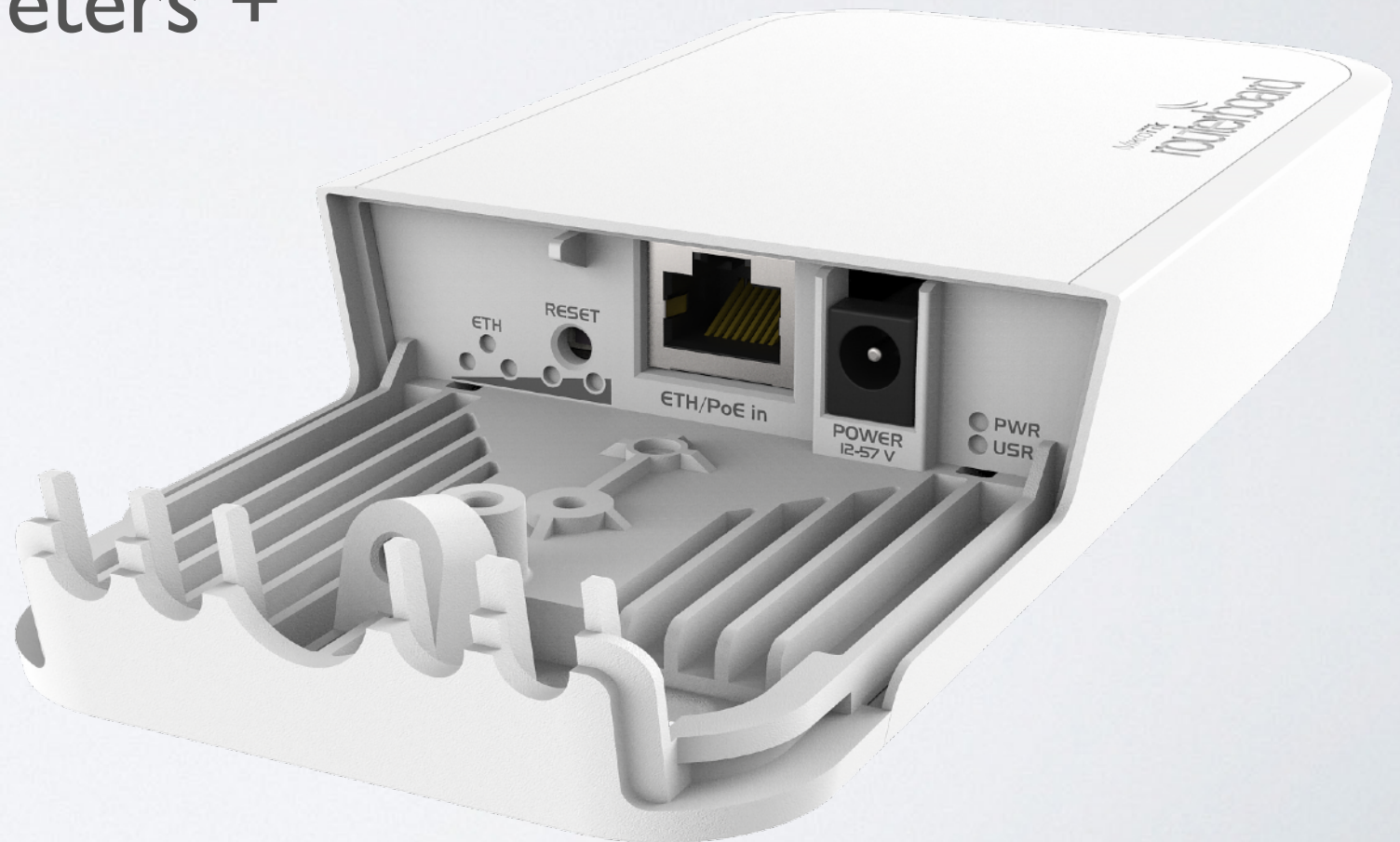


MikroTik

Wireless Wire

# Wireless Wire

- 1 Gbps full duplex without wires
- Now for distance 200 meters +
- 60 GHz beam-forming
- Paired Secure Link  
Preconfigured
- \$198 kit





# WIRELESS WIRE DISH

Two LHG60G devices for long range 1 Gbit

# LHG 60G

- 1 Gbit full duplex (wire speed)
- Works in 60 GHz spectrum
- Familiar LHG design
- Quad-core ARM CPU
- Low cost and low weight
- Targeted for longer 1500 meters and more!
- Kit price \$298





# LtAP mini

- 2.4 GHz AP in a rugged case
- miniPCle for LTE
- Built-in GPS
- Optional external antennas for GPS and LTE
- Serial port
- Perfect for outdoor and mobile applications





# Available now

- 129\$ with LTE module
- 89\$ without module





# SXTsq Lite 2

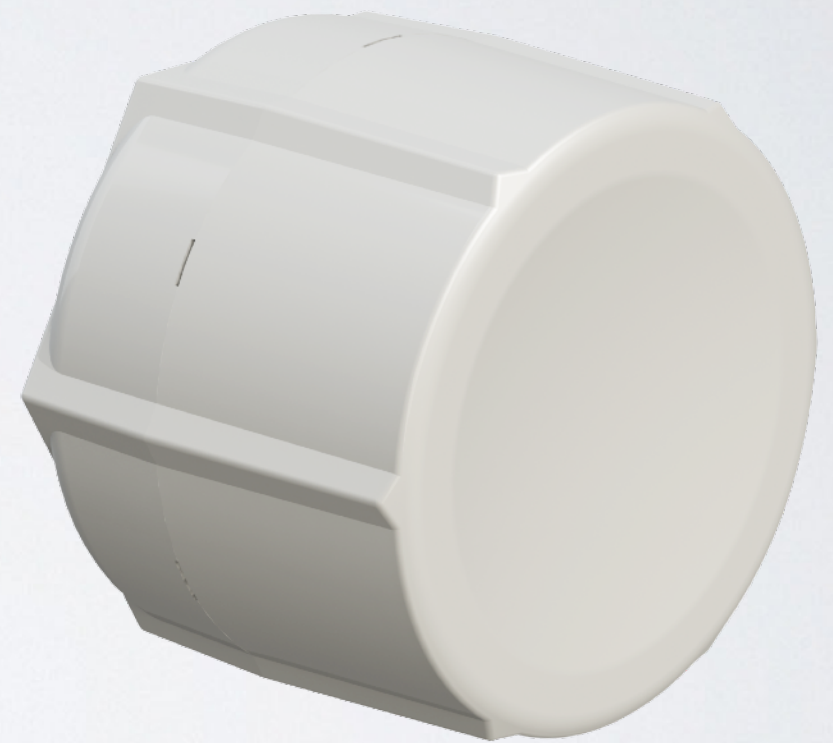
- 2GHz CPE
- Slim design
- Low price





# SXT LTE kit

- Dual SIM
- LTE card built in
- 2x Ethernet
- PoE output on #2
- International LTE bands  
1,2,3,7,8,20,38 and 40





# hAP ac<sup>2</sup>

- Gigabit ports
- Dual chain, dual band
- Wall mount or stand
- Same small size as Lite model



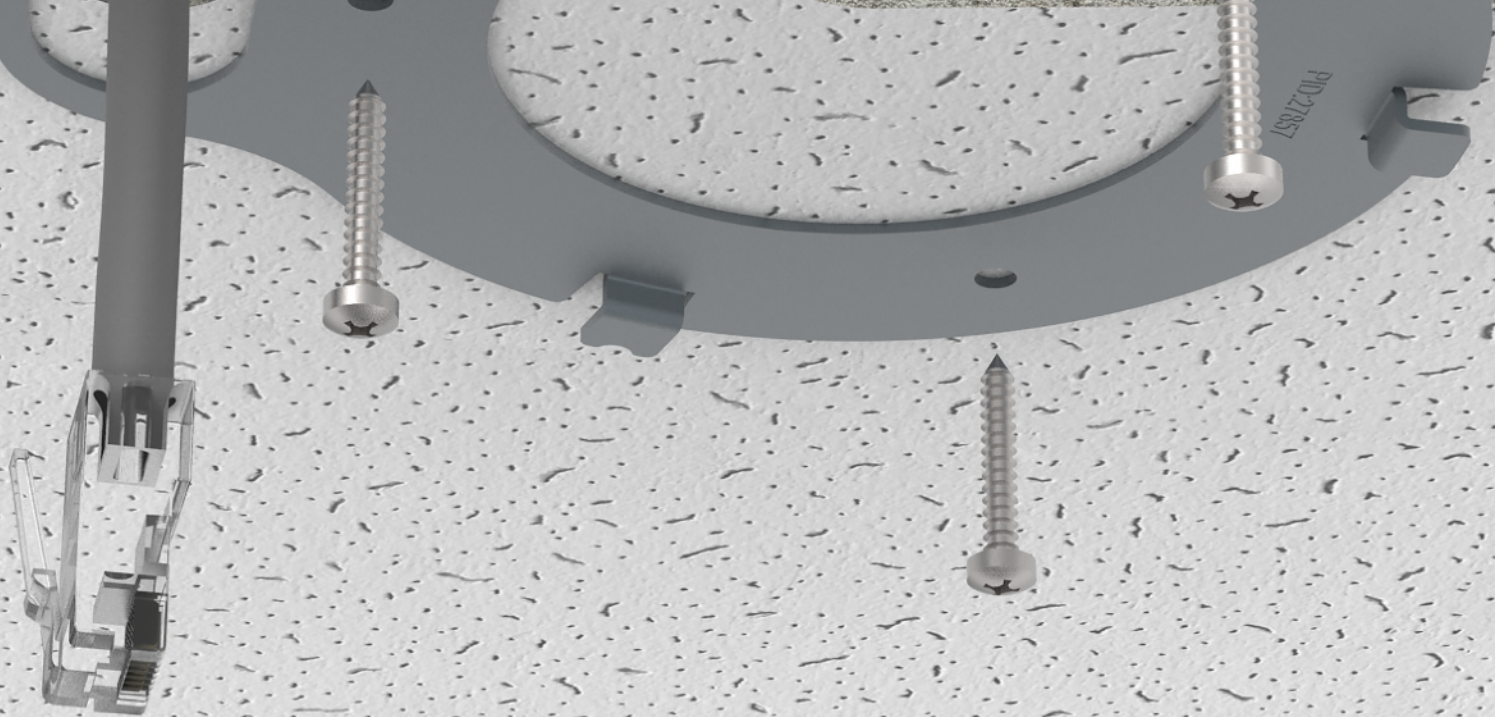


# cAP ac

- Dual band, dual chain
- Gigabit port for 802.11ac speeds
- Two Ethernet ports
- PoE out
- Two cases included











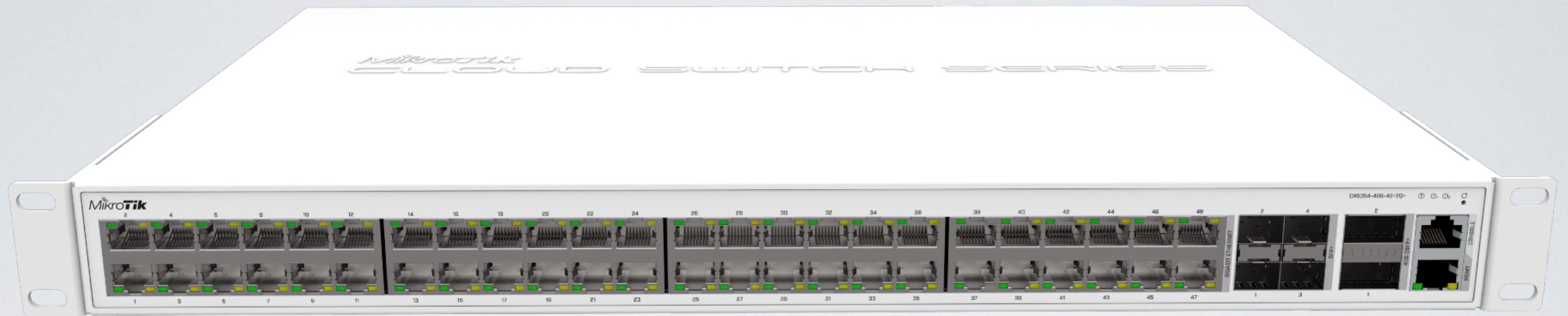


# LDF 2

- 2GHz CPE
- Mounts in regular satellite dish
- Ultra long range



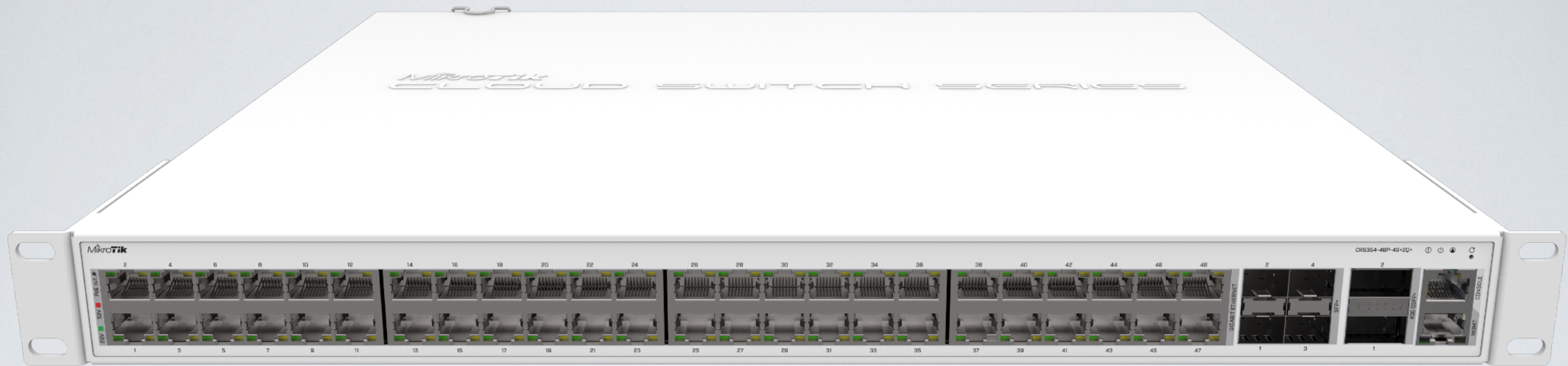




# CRS354-48G-4S+2Q+

- 48x Gigabit ports
- 4x SFP+ for 10Gbit connections
- 2x QSFP ports for 40Gbit connections





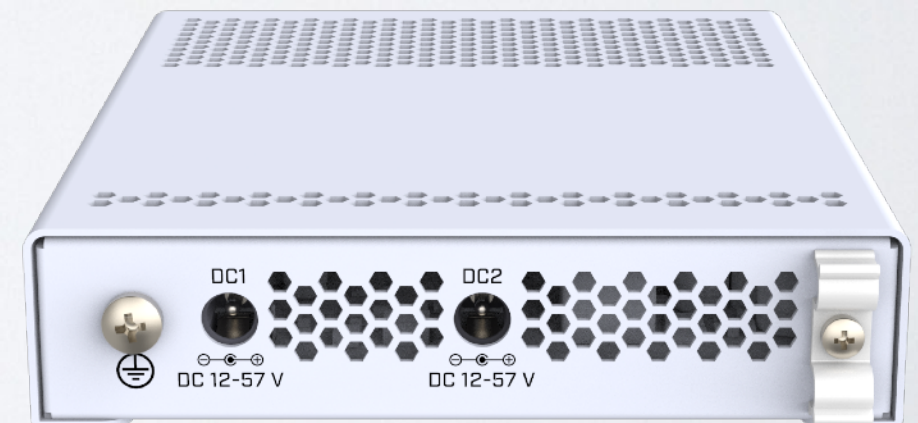
# CRS354-48P-4S+2Q+

- 48x Gigabit ports with PoE out
- 4x SFP+ for 10Gbit connections
- 2x QSFP+ ports for 40Gbit connections



# CRS305-1G-4S+IN

- 4x SFP+ ports
- 1x Gigabit Ethernet
- Metallic enclosure
- Dual DC jacks





# mANTBox2 12s

- 2 GHz sector antenna
- 12 dBi
- RouterBOARD built in





# mANT 5o LTE

- Special 5 dBi LTE antenna
- Omnidirectional design
- Use with wAP, LtAP
- High speed internet in remote locations



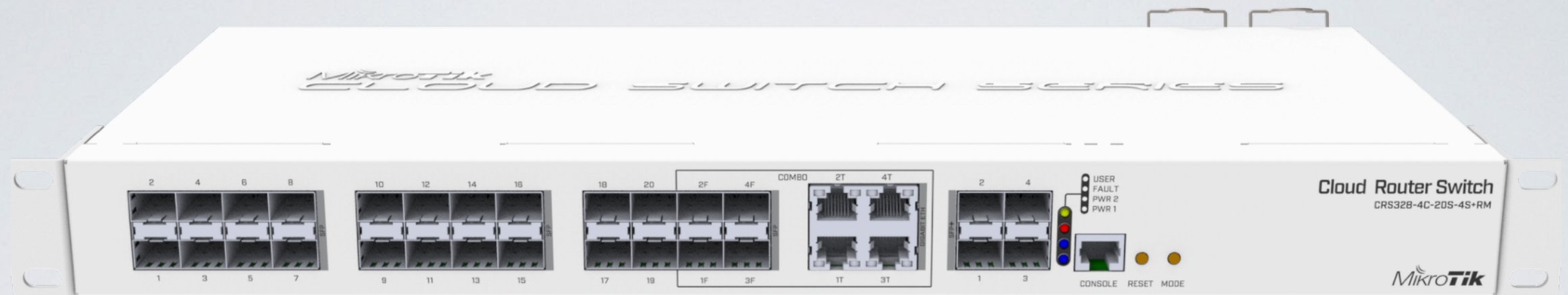


# CRS309-1G-8S+PC

- 8x SFP+ ports
- 1x Gigabit Ethernet
- Silent case



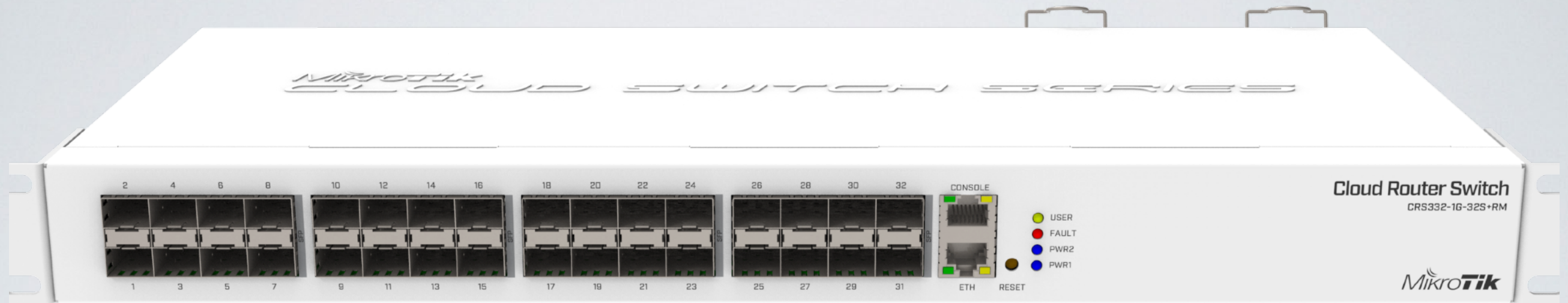




# CRS328-4C-20S-4S+RM

- 20x SFP ports
- 4x ETH/SFP combo ports
- 4x SFP+ ports
- Dual PSU





# CRS332-32S+RM

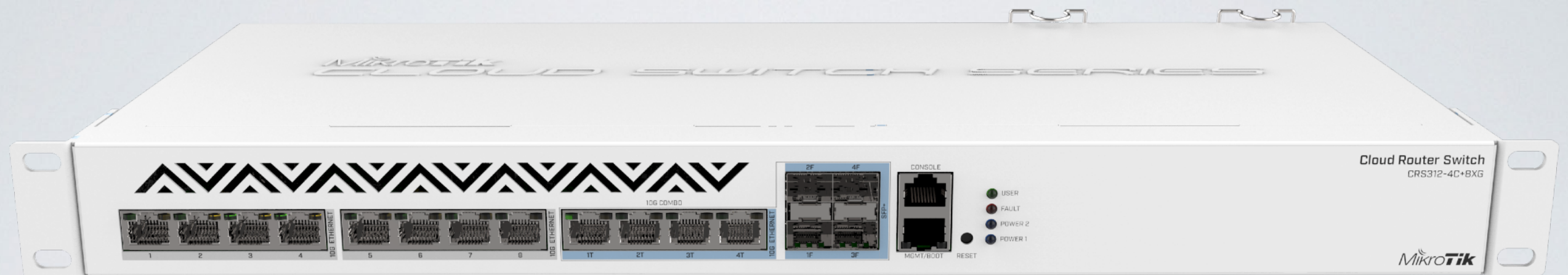
- 32x SFP+ ports
- RJ45 console and ETH management
- Dual PSU

# PWR-Line AP

- Small AP directly plugs into socket
- Makes 100Mbit links with others like it
- Build WiFi network without special cabling
- Auto pairs with new devices







# CRS312-4C+8XG

- 8x 10G Ethernet ports
- 4x 10G Ethernet / 10G SFP+ combo ports
- Console and management ports
- Dual PSU

# Need help?

- Ask a local distributor
- Hire MikroTik consultant
- Read the manual [wiki.mikrotik.com](http://wiki.mikrotik.com)
- Email [support@mikrotik.com](mailto:support@mikrotik.com)
- Attend a training class or join and Academy class in a University



# After the MUM

- All presentations - [mum.mikrotik.com](http://mum.mikrotik.com)
- Videos - [youtube.com/mikrotik](http://youtube.com/mikrotik)
- License for paid and voucher registrations will be sent by an e-mail



MikroTik

The image features the MikroTik logo, which consists of the word "Mikro" in a standard sans-serif font, followed by a stylized icon of three curved lines, and then "Tik" in a bold, italicized sans-serif font. The entire logo is rendered in a dark gray color and is positioned centrally on a light gray background. Below the logo, there is a faint, semi-transparent reflection of the logo itself.