



*Micro***Tik**



WHAT DO WE DO?



WE CREATE NETWORKS



- Made in 1996, building networks ever since
- Latvian company
- Mikrotīkls means “Small network” in Latvian language



LATVIA

A large group of men, likely workers or officials, are posed in front of industrial machinery. The group is arranged in several rows, with some men standing on a raised platform or scaffolding. The background features a large, circular structure, possibly a ship's hull or a large wheel, and other industrial equipment. The image is overlaid with a semi-transparent red and purple gradient.

Continuing the tradition of 120 years of history
where the Latvian industrial revolution began.







WE MAKE SOFTWARE AND HARDWARE

MORE THAN 200 PRODUCTS



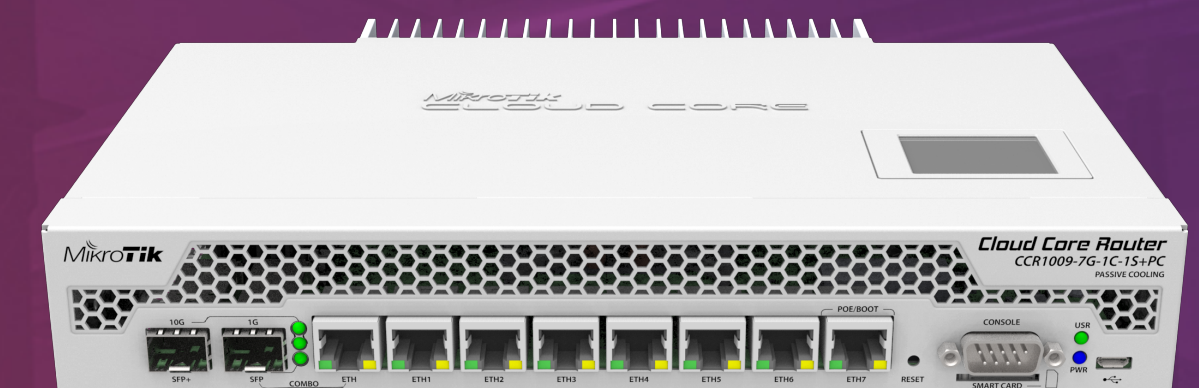
HOME



OUTDOOR



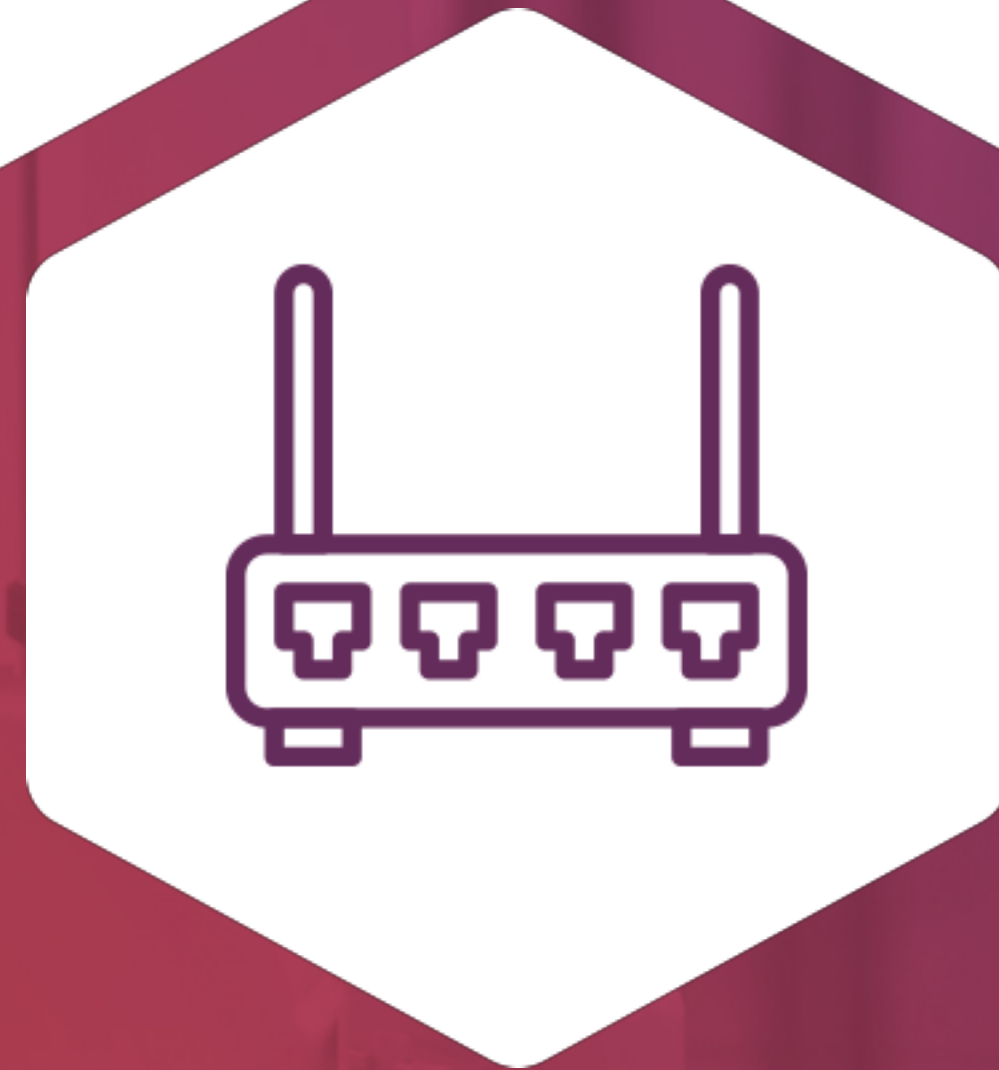
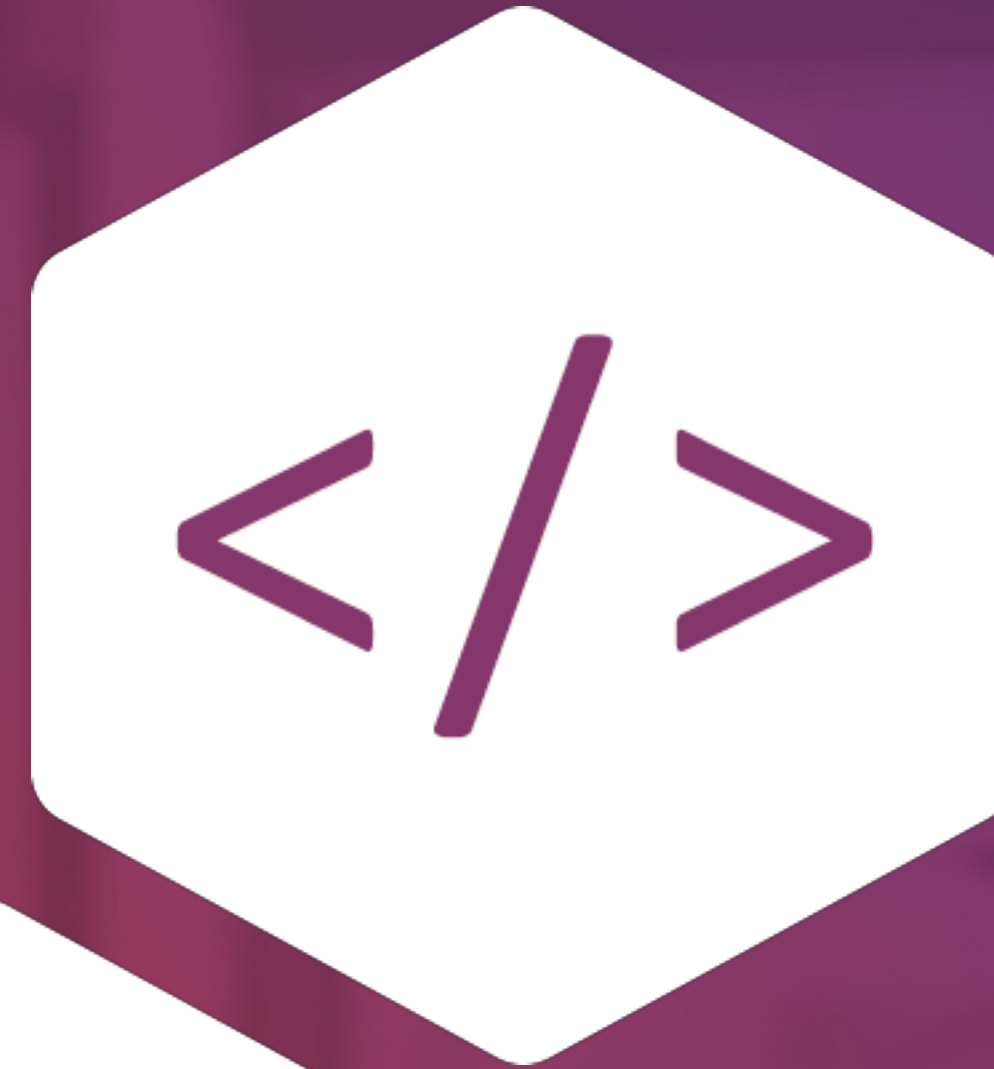
SOHO



CARRIER



THE PROCESS



AVAILABLE AROUND THE WORLD

A world map with a dark purple background and a grid of latitude and longitude lines. Numerous yellow plus markers are scattered across the map, primarily concentrated in North America, Europe, and Asia. Four white rectangular boxes with black borders contain text: '600 academies' in the upper right, '1550 consultants' in the center left, '500 trainers' in the lower left, and '600 distributors' in the lower right.

600 academies

1550 consultants

600 distributors

500 trainers



MIKROTIK USER MEETING



80+ countries

A world map with a dark purple background and a grid of latitude and longitude lines. Orange hexagonal markers are placed across the map to indicate event locations. The markers are most densely clustered in North America, Europe, and East Asia, with more sparse distribution in South America, Africa, and Australia. Three white-bordered text boxes are overlaid on the map, providing summary statistics: '80+ countries' in the upper center, '200 events' in the middle left, and '3500+ participants' in the bottom right.

200 events

3500+
participants

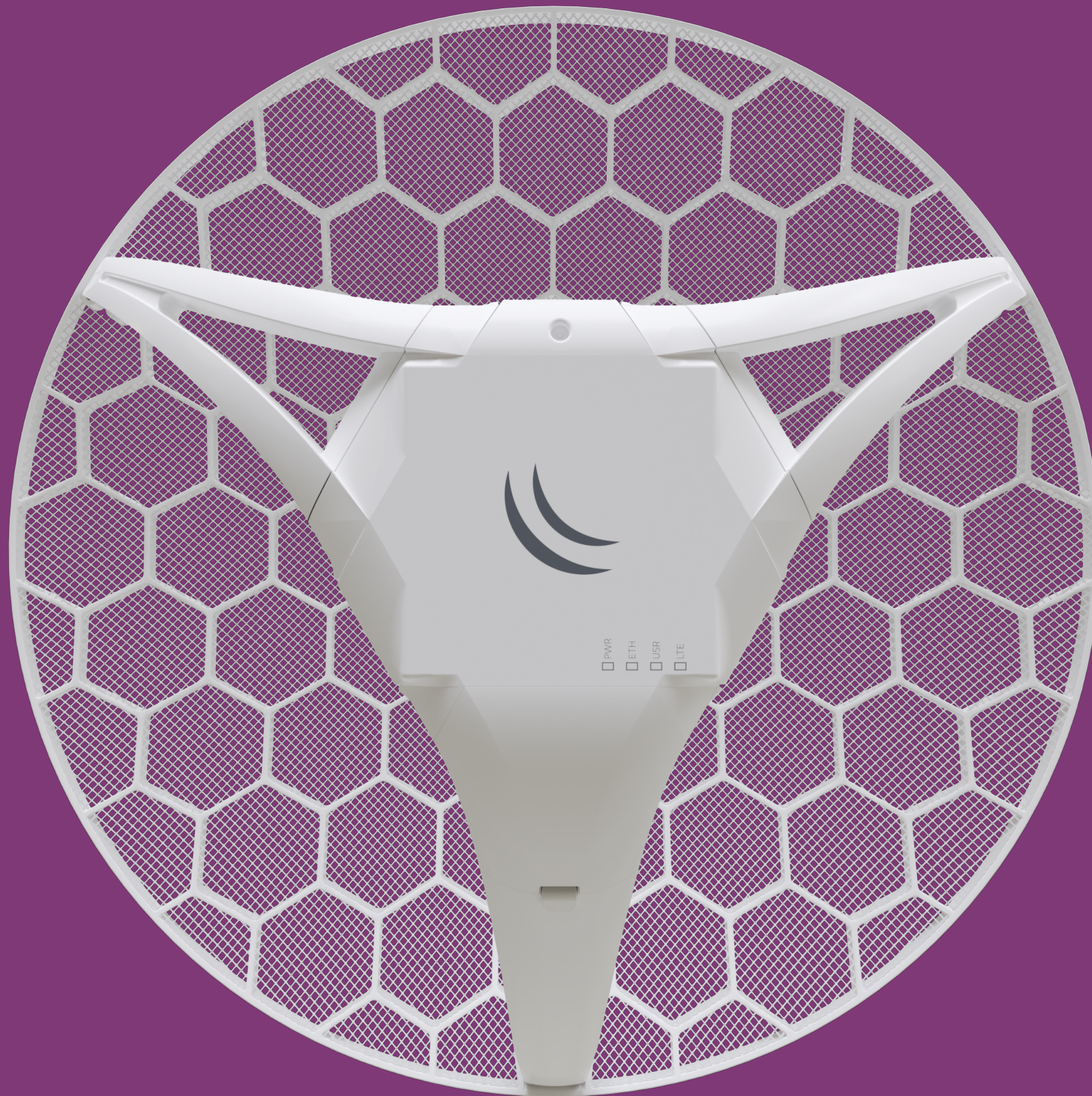
MUM EUROPE 2019

- 14 staff members from MikroTik
- Arrange a business meeting at the registration desk
- 2 full days of presentations, see <http://mt.lv/agenda>
- Lunch with voucher
- 48 exhibitors
- MUM-Vienna-Fast with password “mikrotik”



PRODUCT UPDATES

LHG LTE



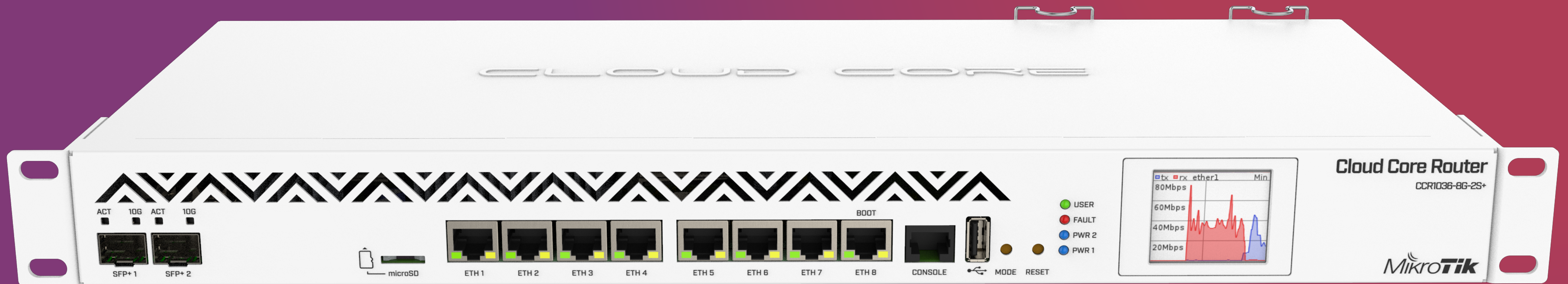
- High gain dish for remote locations
- miniPCle card can be upgraded

LtAP

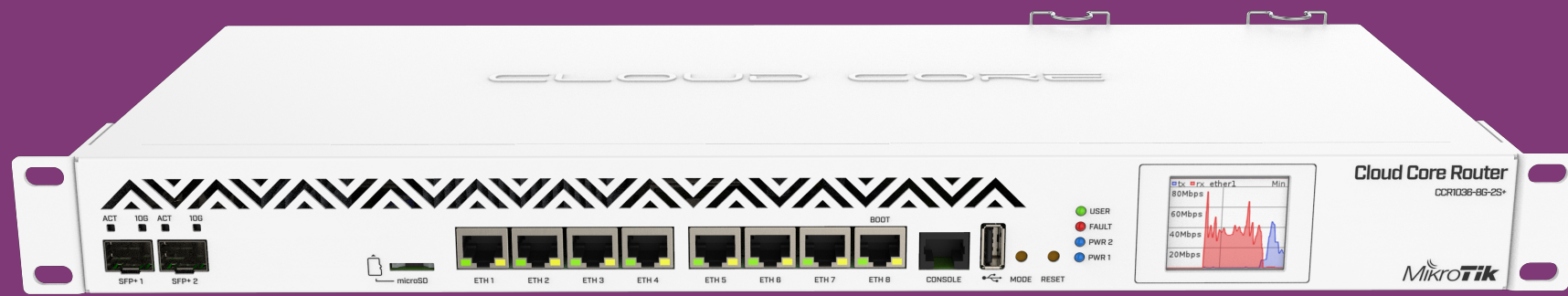


- Still coming, soon, promise!
- Three SIM slots, two miniPCle
- GPS (GNSS), built-in WiFi, multiple power sources, USB, console, SMA connectors

CCR1036 and CCR1016

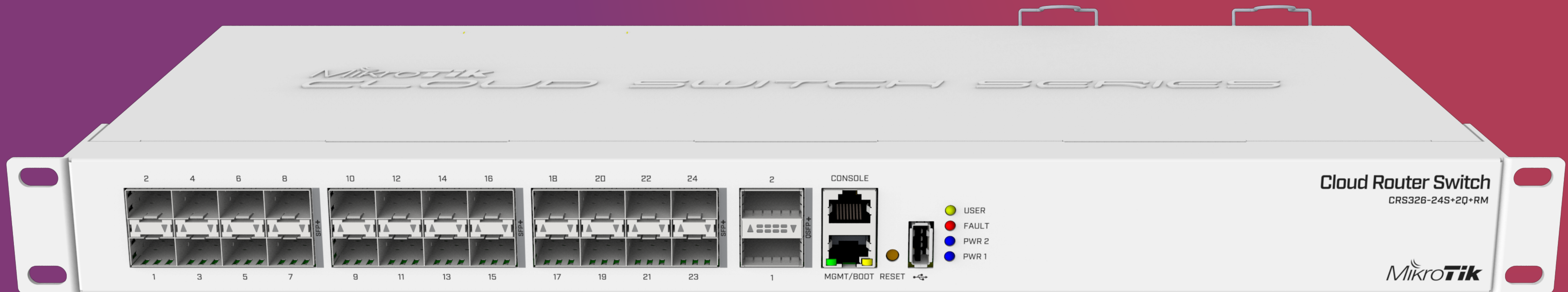


CCR1036 and CCR1016



- All CCR in these series now will have dual PSU for redundancy
- Full size USB port
- Improved PSU design. Optional 48 V PSU available separately
- CCR1036-8G-2S+; CCR1036-12G-4S; CCR1016-12G; CCR1016-12S-1S+

CRS326-24S+2Q+

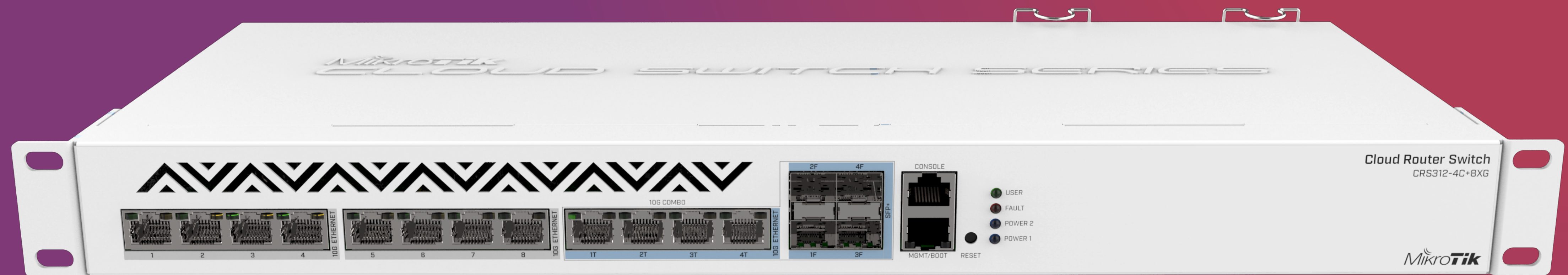


CRS326-24S+2Q+

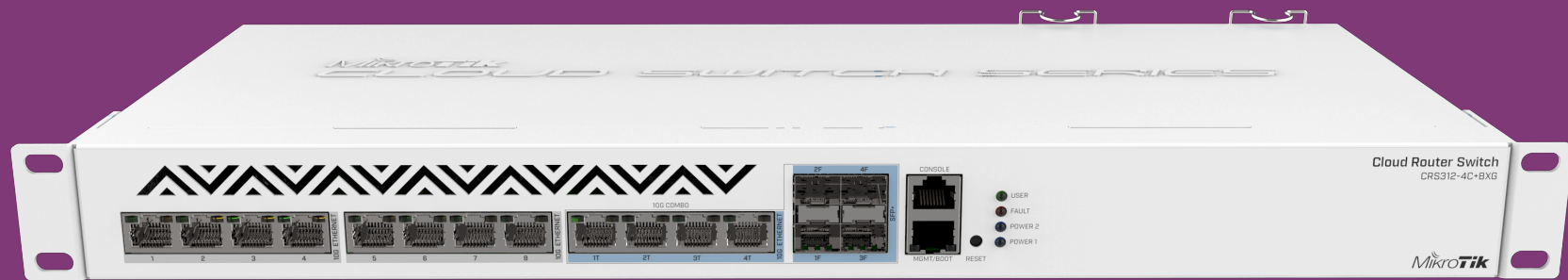


- 24x SFP+ (10G ports)
- 2x QSFP+ (40G ports)
- Previously announced as CRS332-32S+
- Will be available in Q3 2019

CRS312-4C+8XG

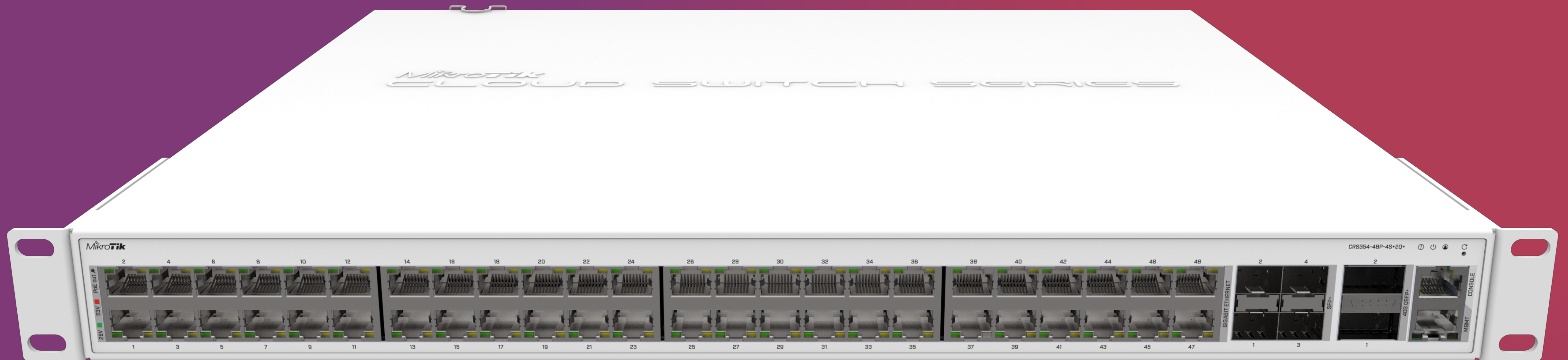


CRS312-4C+8XG

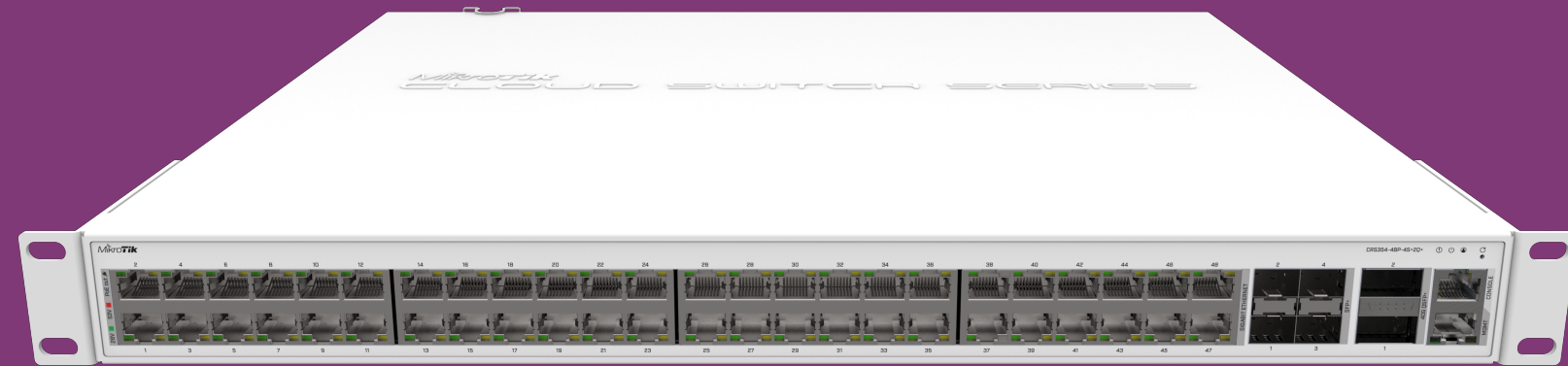


- 8x 10G Ethernet ports
- 4x 10G Ethernet / 10G SFP+ combo ports
- Console and management ports
- Dual PSU
- Will be available in Q2 2019

CRS354-48G-4S+2Q+



CRS354-48G-4S+2Q+



- 48x Gigabit ports
- 4x SFP+ ports
- 2x QSFP+ ports
- 48x PoE out port version
- Expected Q4 2019

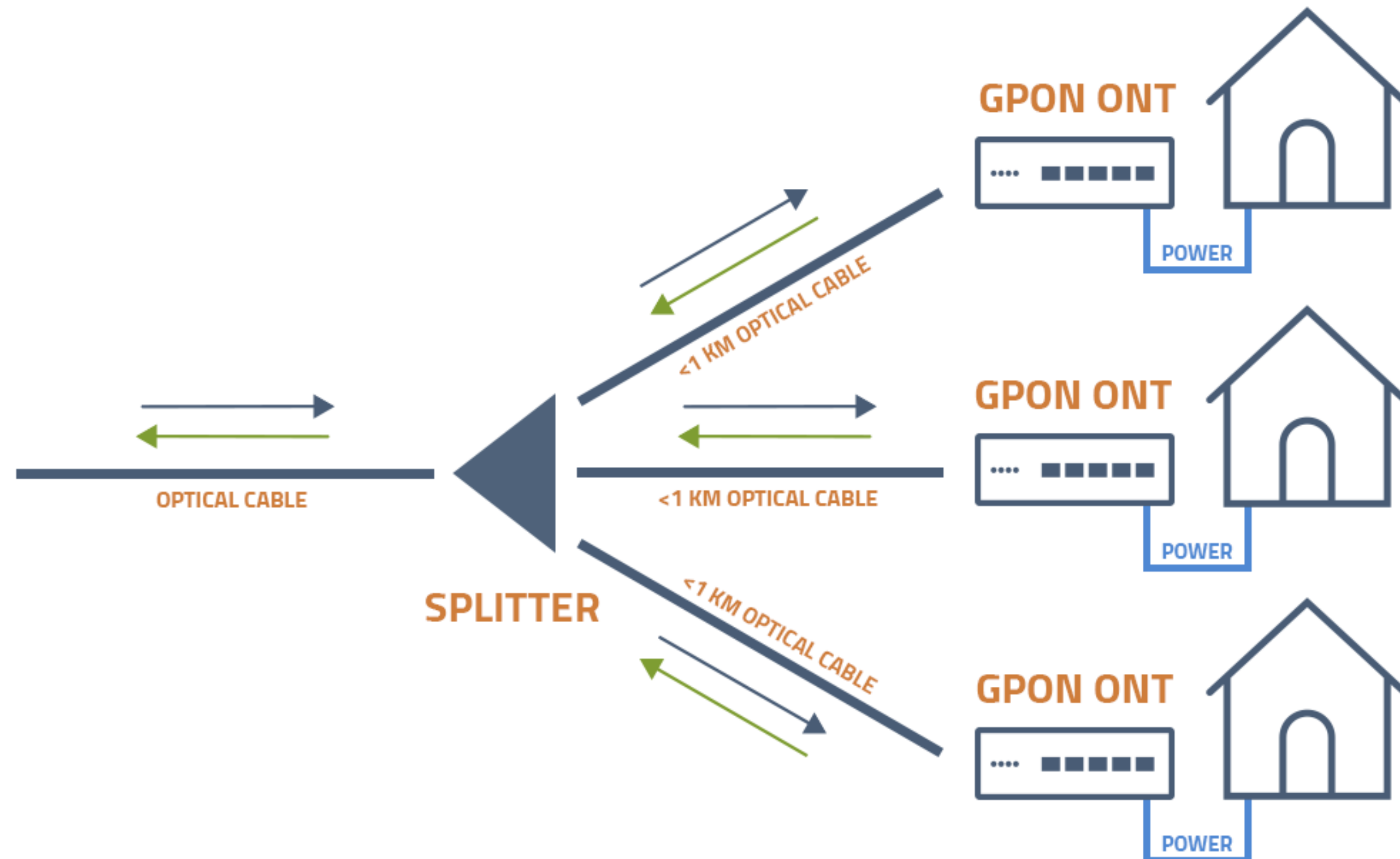
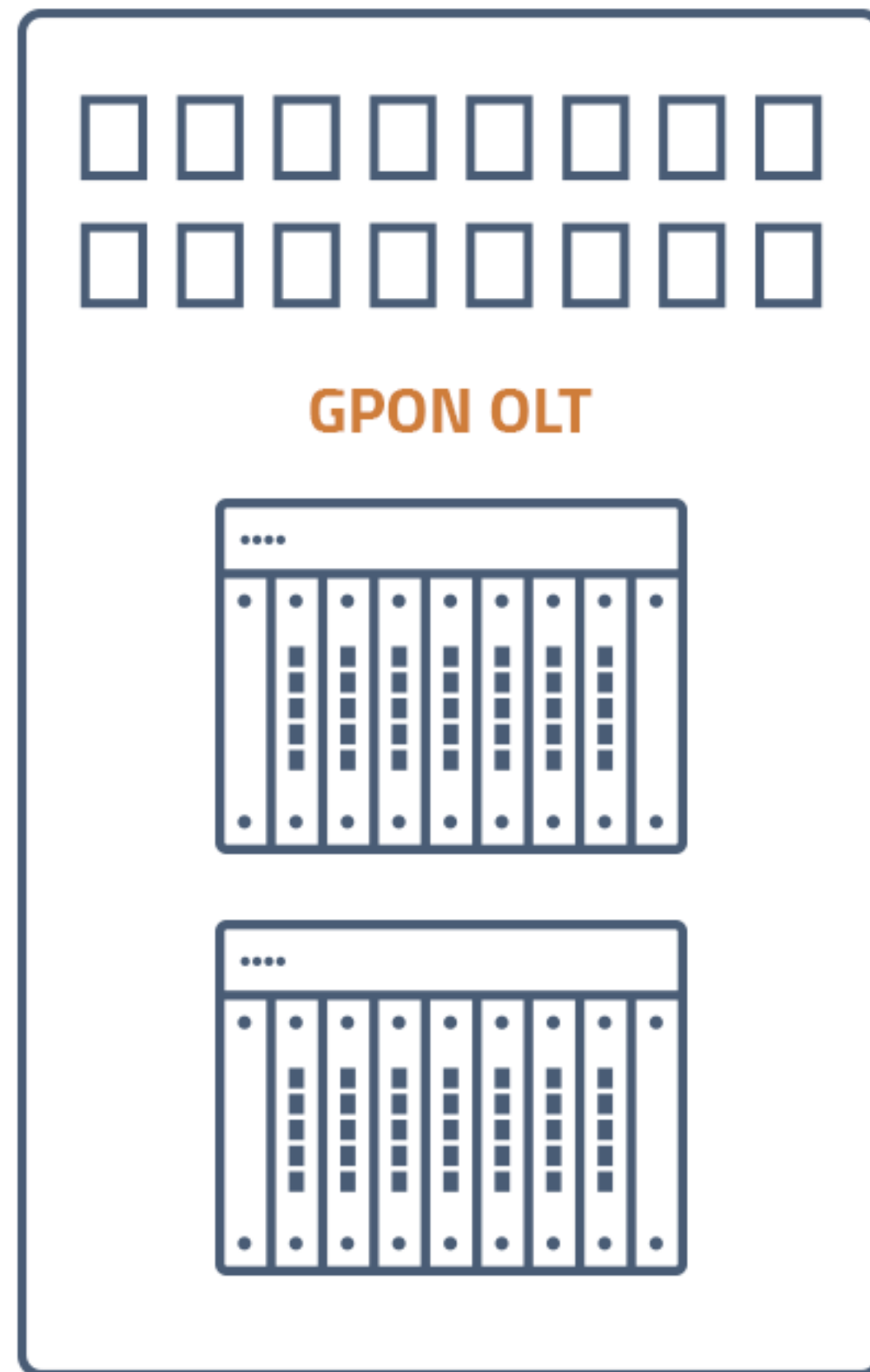


PRODUCT PLAN 2019



GPEN

CENTRAL OFFICE



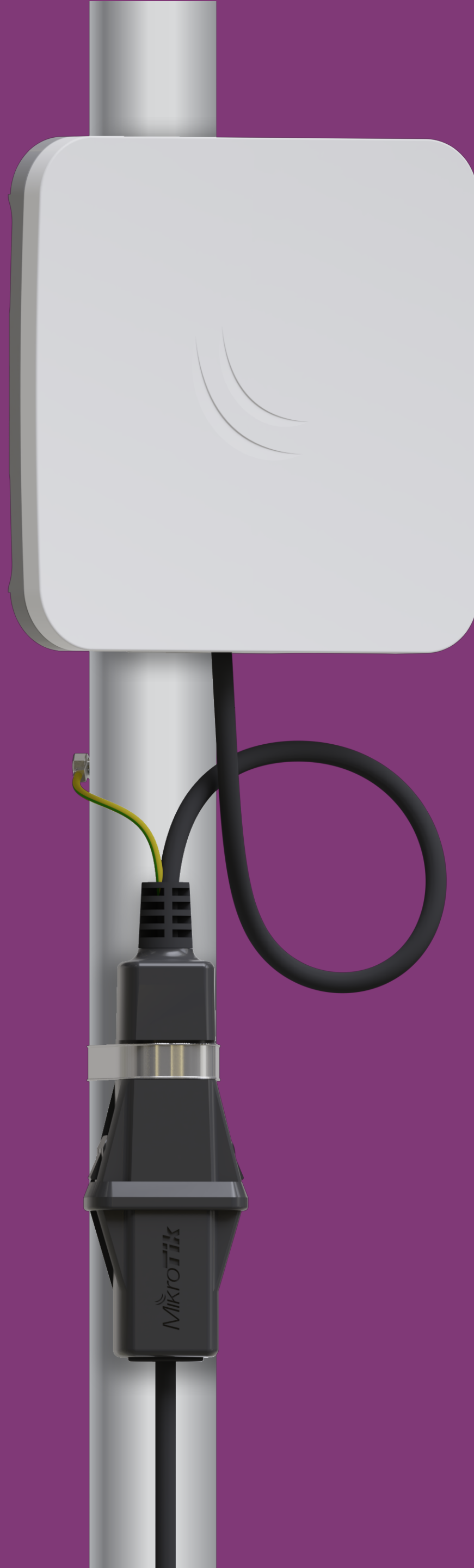


GIGABIT PASSIVE ETHERNET NETWORK

GPER



- Gigabit passive Ethernet repeater
- Ethernet extender with PoE passthrough
- 24-57 V supported
- ~2.5 V loss per 100 meters, allows up to 1.5 km long cable with PoE



GESP

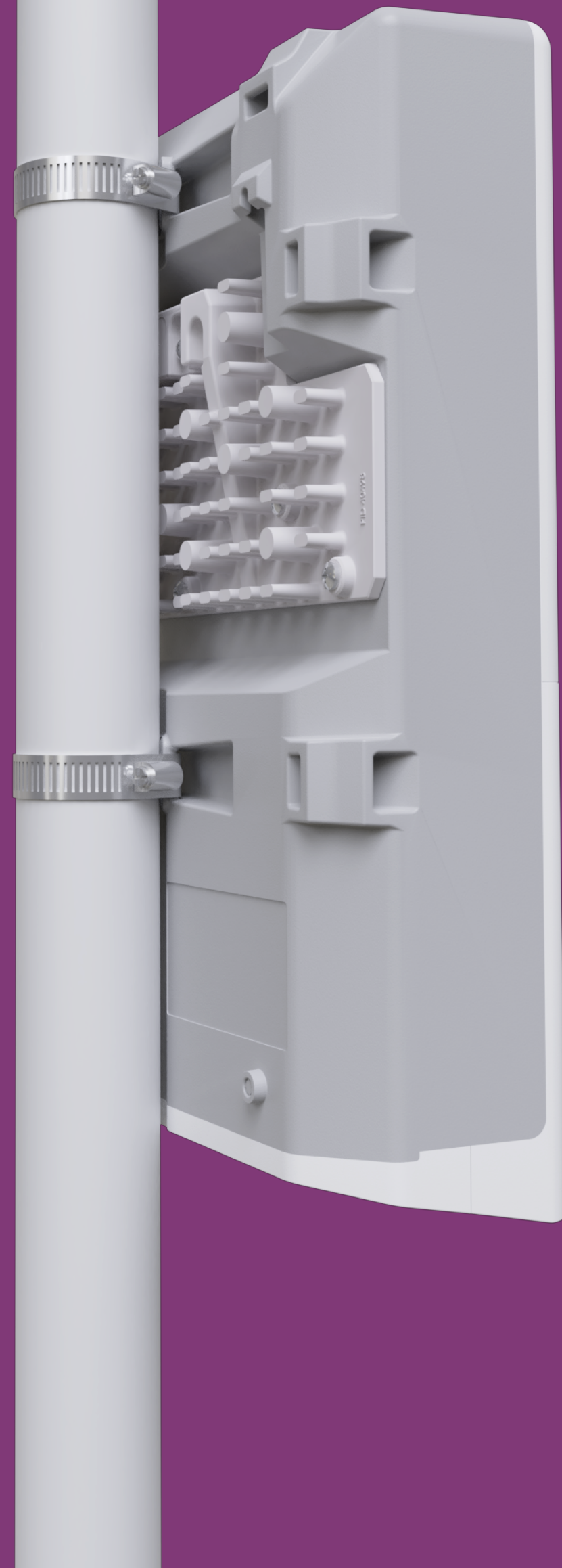
- Gigabit Ethernet surge protector
- Up to 30 kV
- Tower, server room or both



GPEN

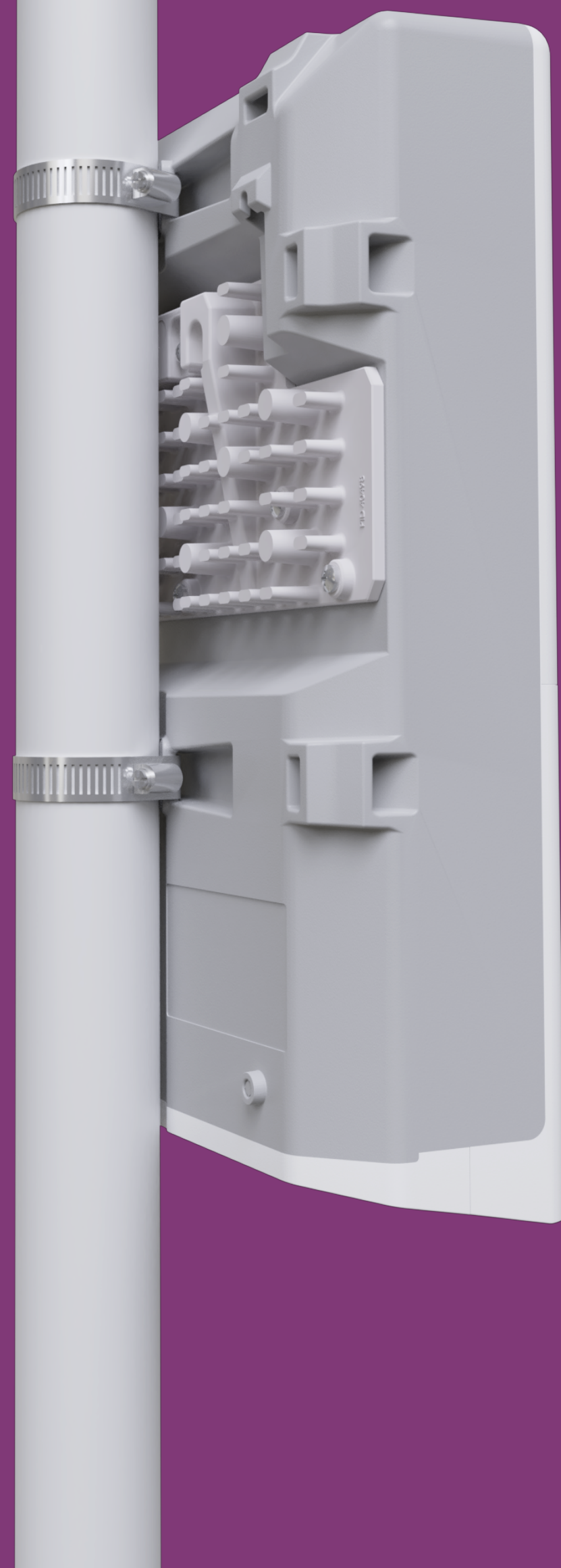
- Gigabit passive Ethernet network
- GPEN11 - PoE injector, can be mounted securely
- GPEN21 - smart injector, also adds SFP for fiber to copper functionality

CRS318-16Fi-2S



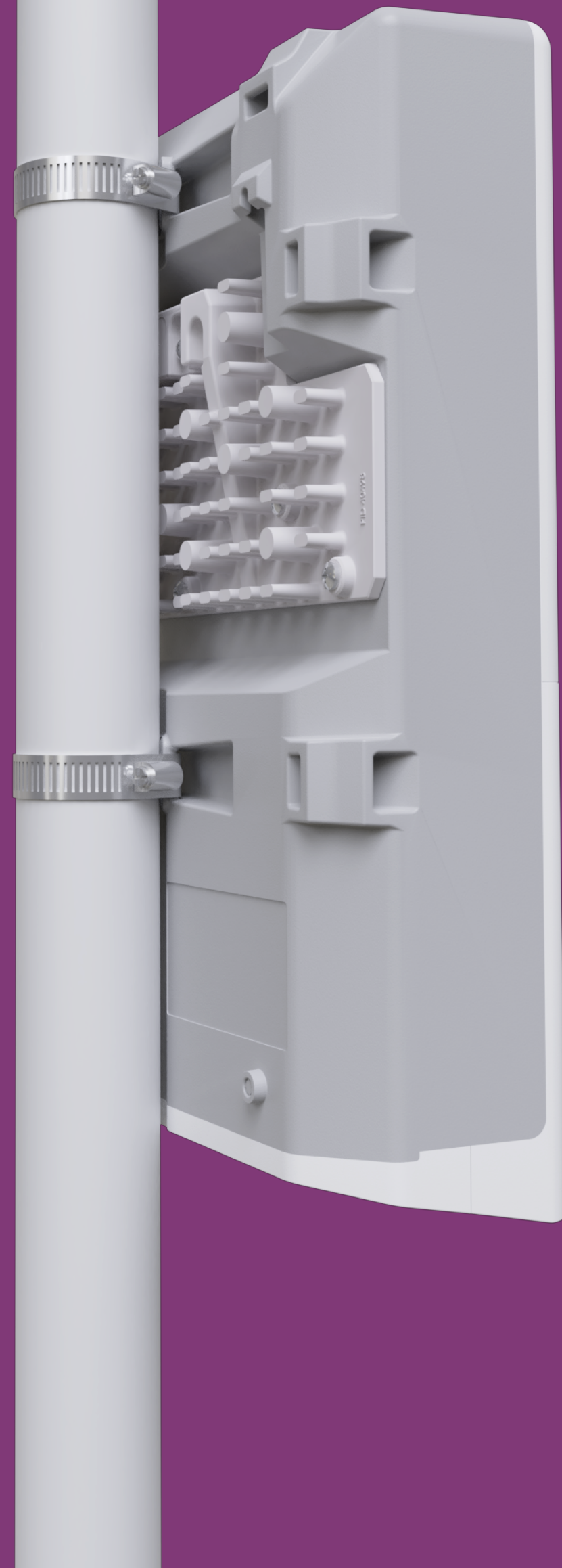
- 16 Ethernet ports and 2xSFP uplinks
- Reverse PoE (PoE in) on 15x ports
- Very affordable pricing
- PoE out on single port

CRS318-16P-2S+

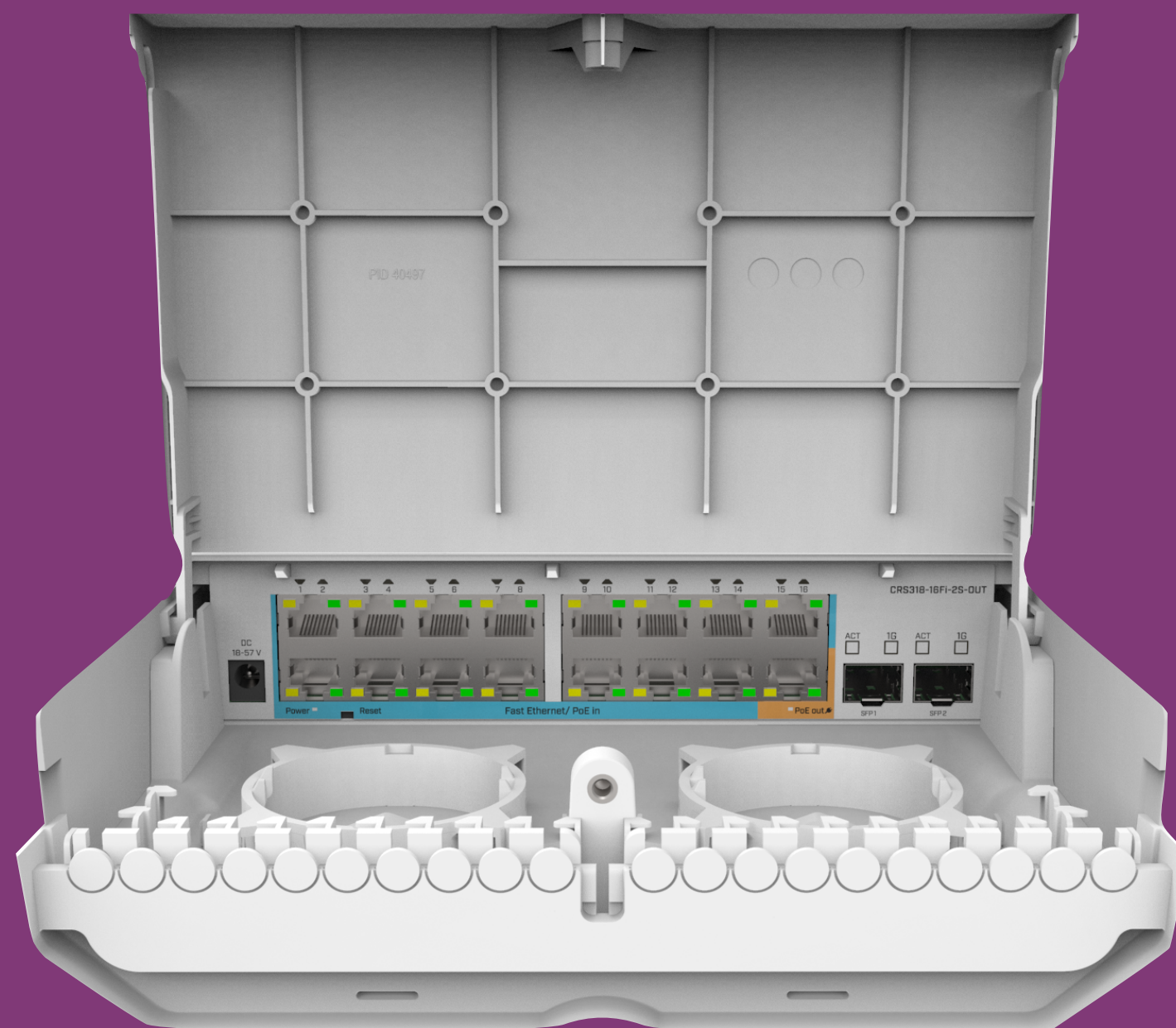


- 16 Gigabit Ethernet ports
- 2x SFP+ uplinks

CSS610-8P-2S+



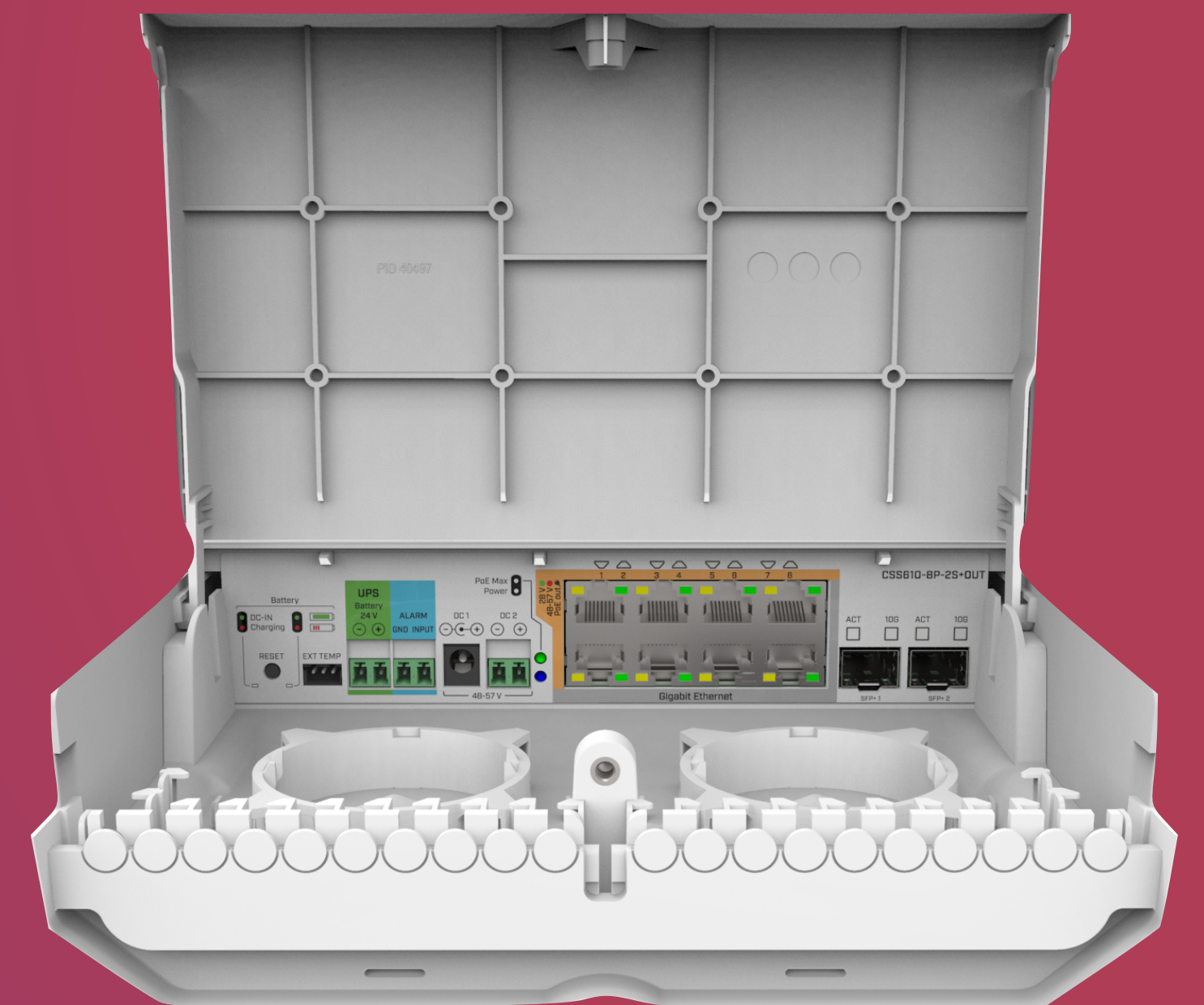
- SwOS only
- 8 Ethernet ports with PoE out and 2x SFP+ uplinks
- Very affordable pricing
- Will have built in UPS battery support



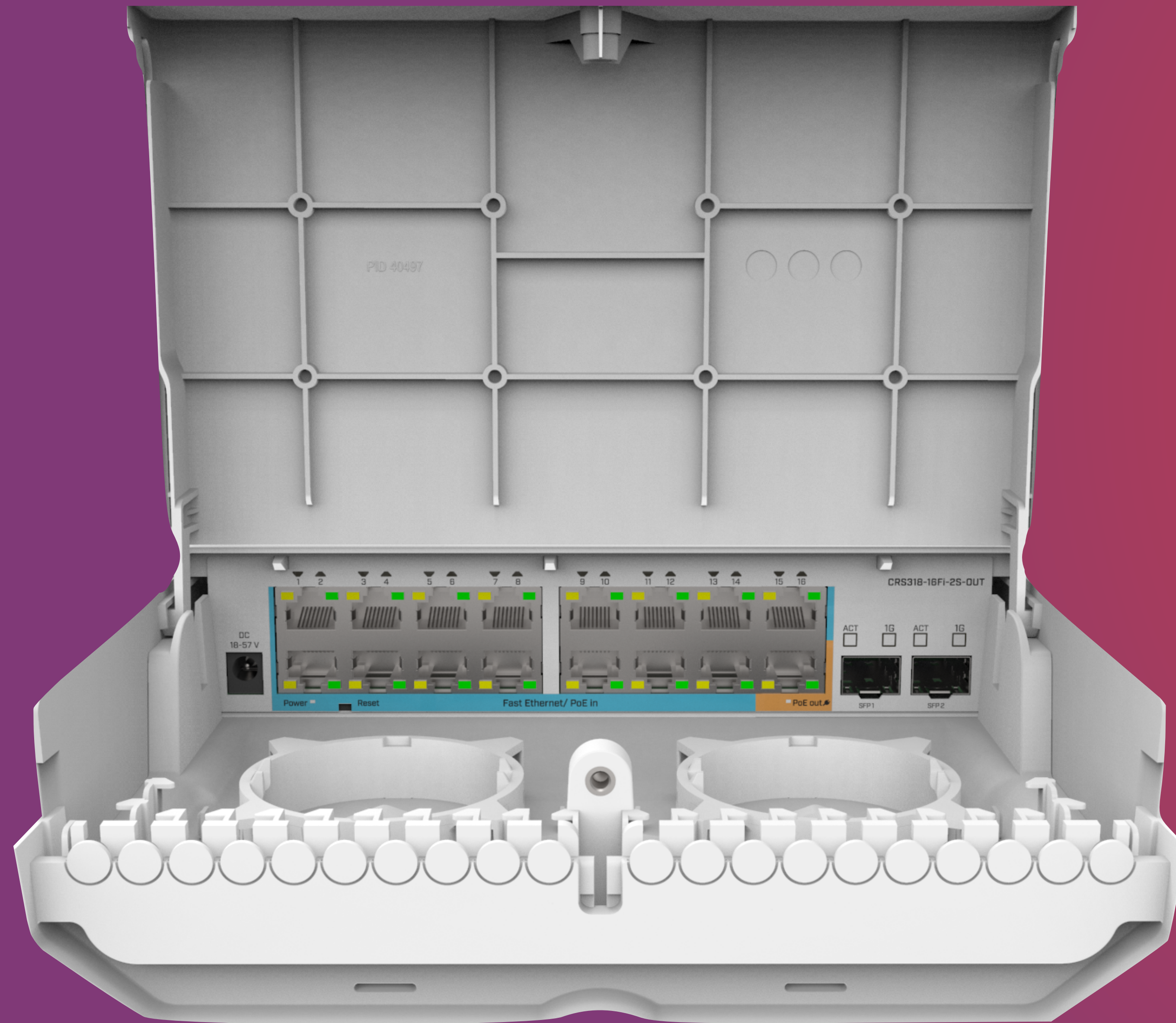
CRS318-16Fi-2S-OUT



CRS318-16P-2S+OUT



CSS610-8P-2S+OUT

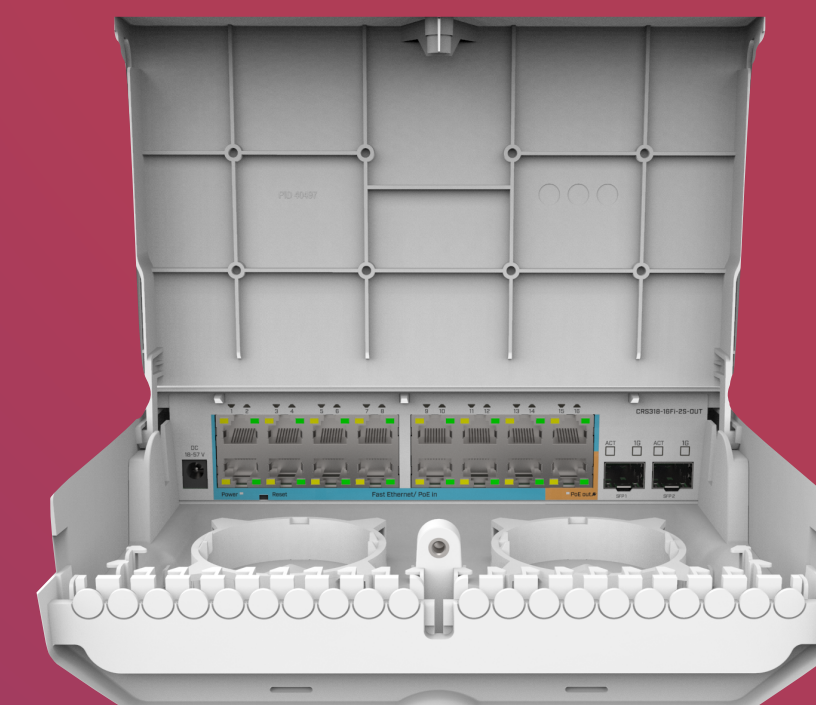
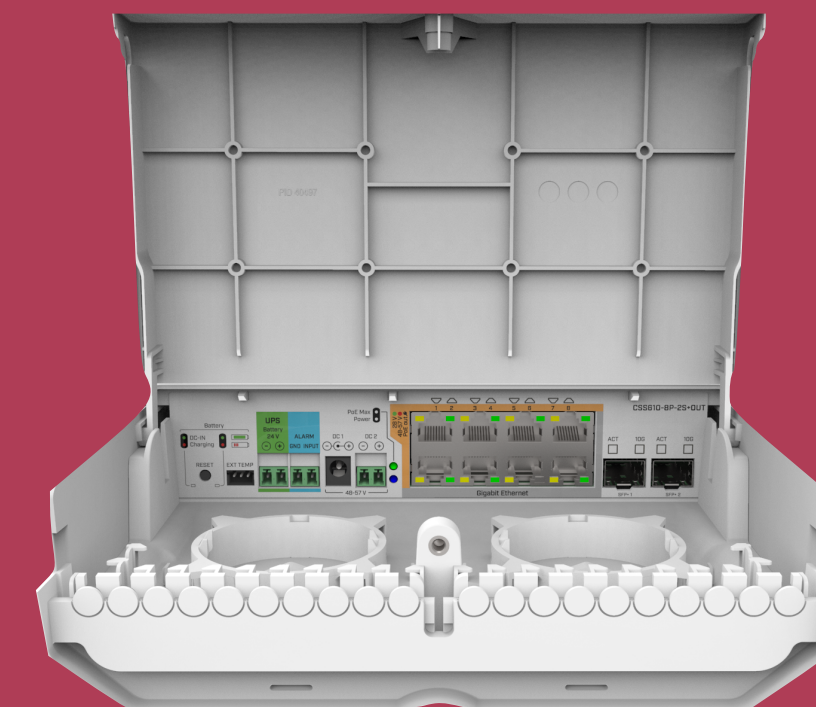


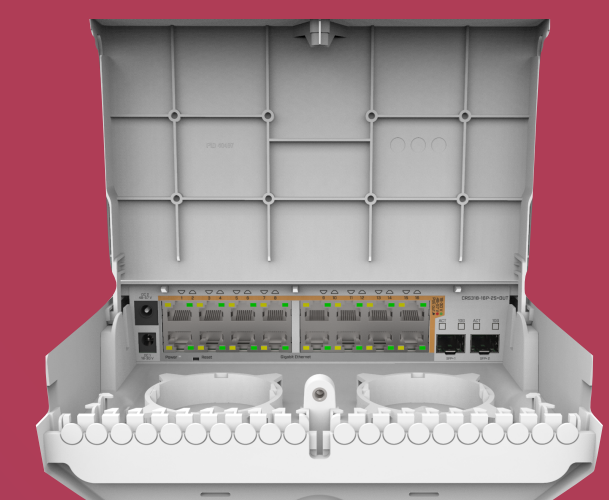
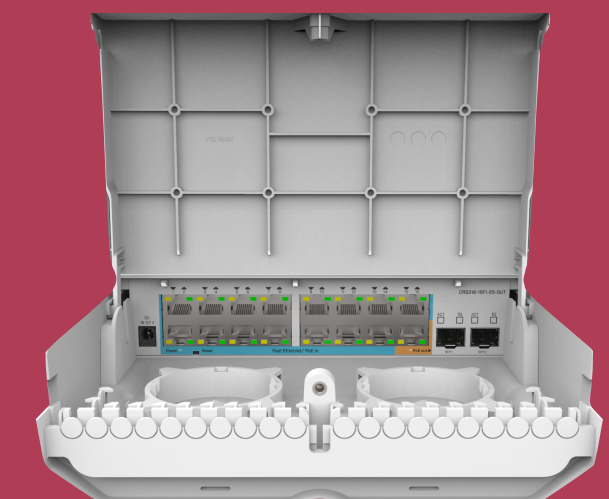
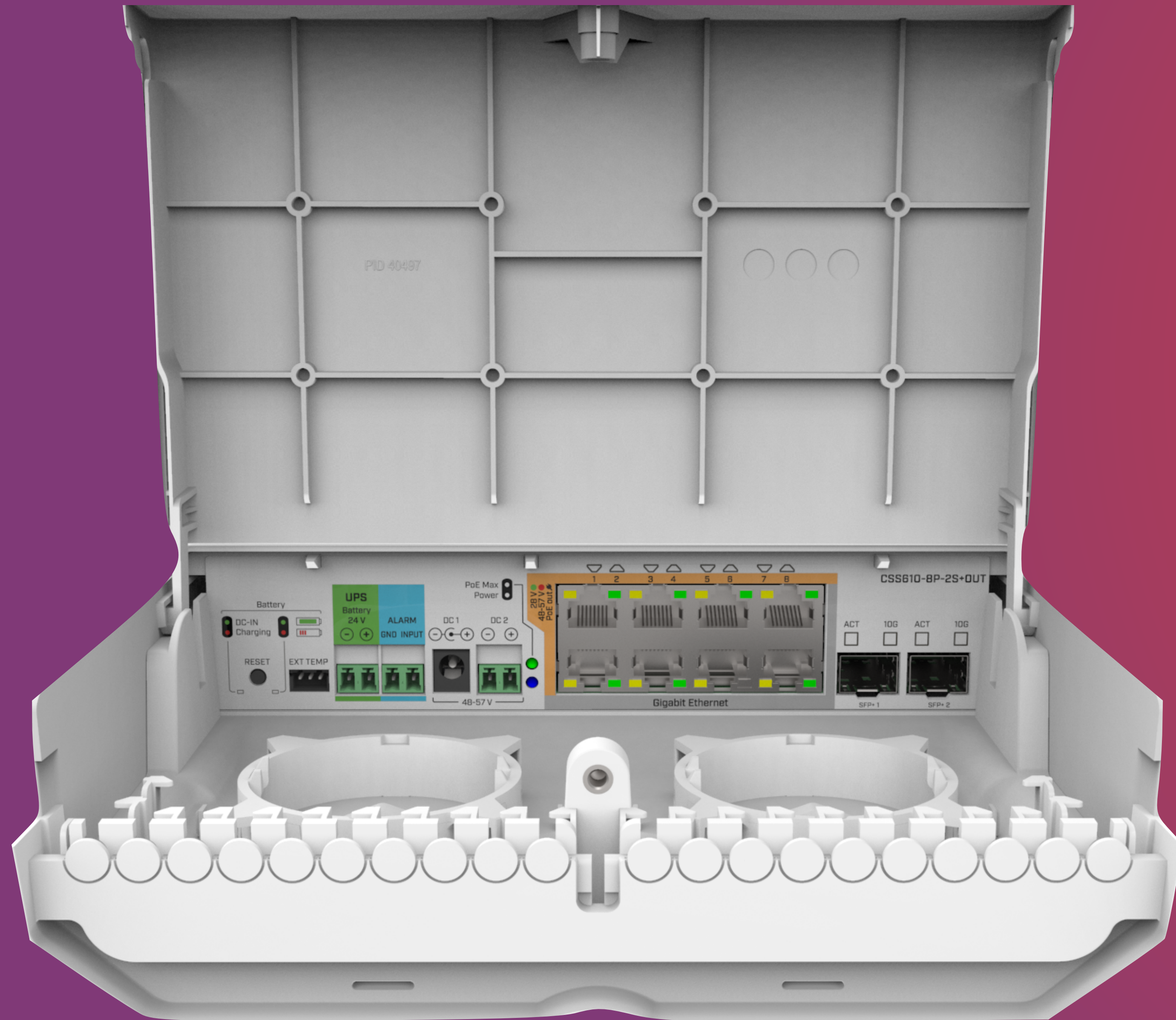
CRS318-16Fi-2S-OUT





CRS318-16P-2S+OUT



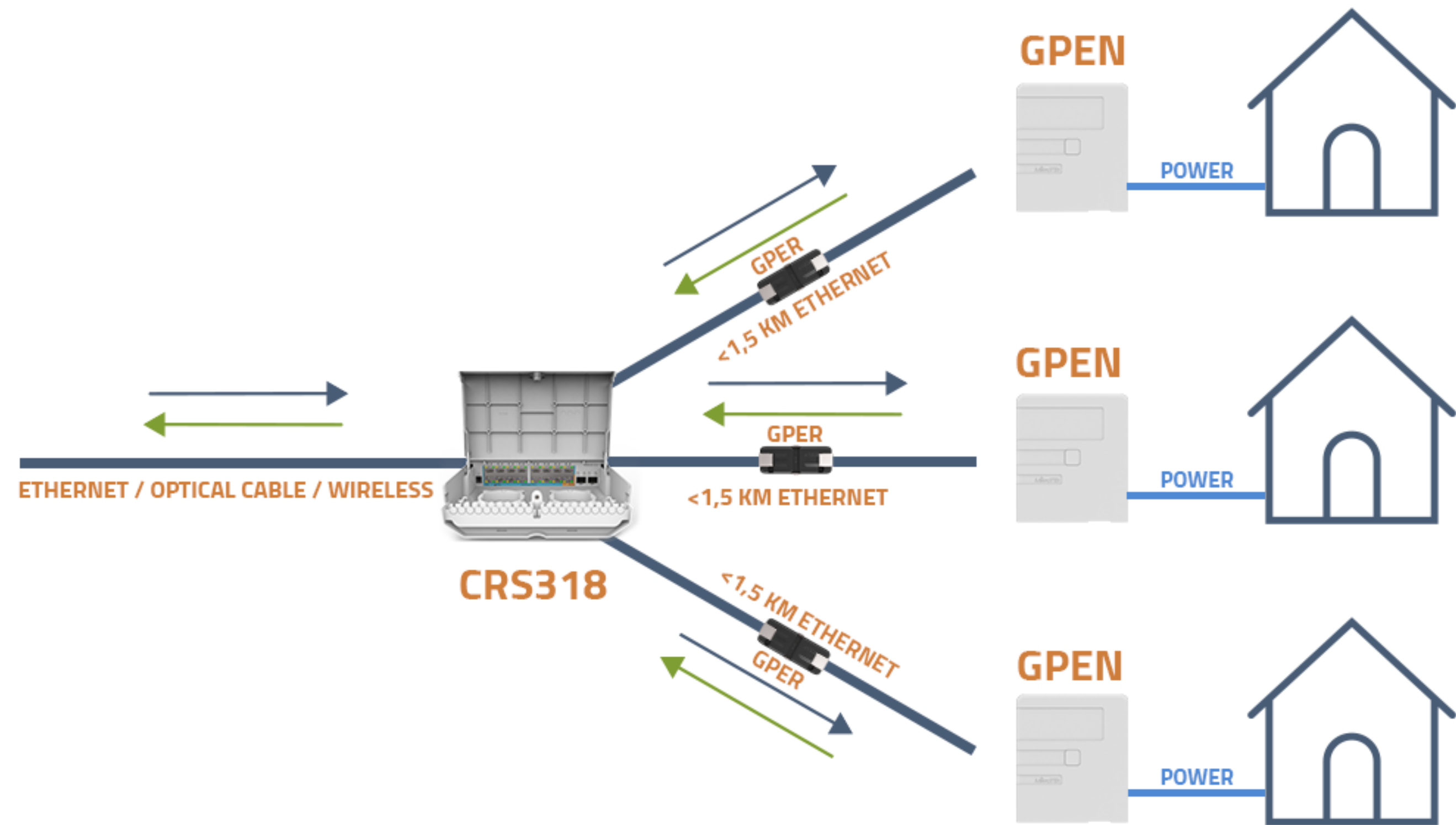


CSS610-8P-2S+OUT

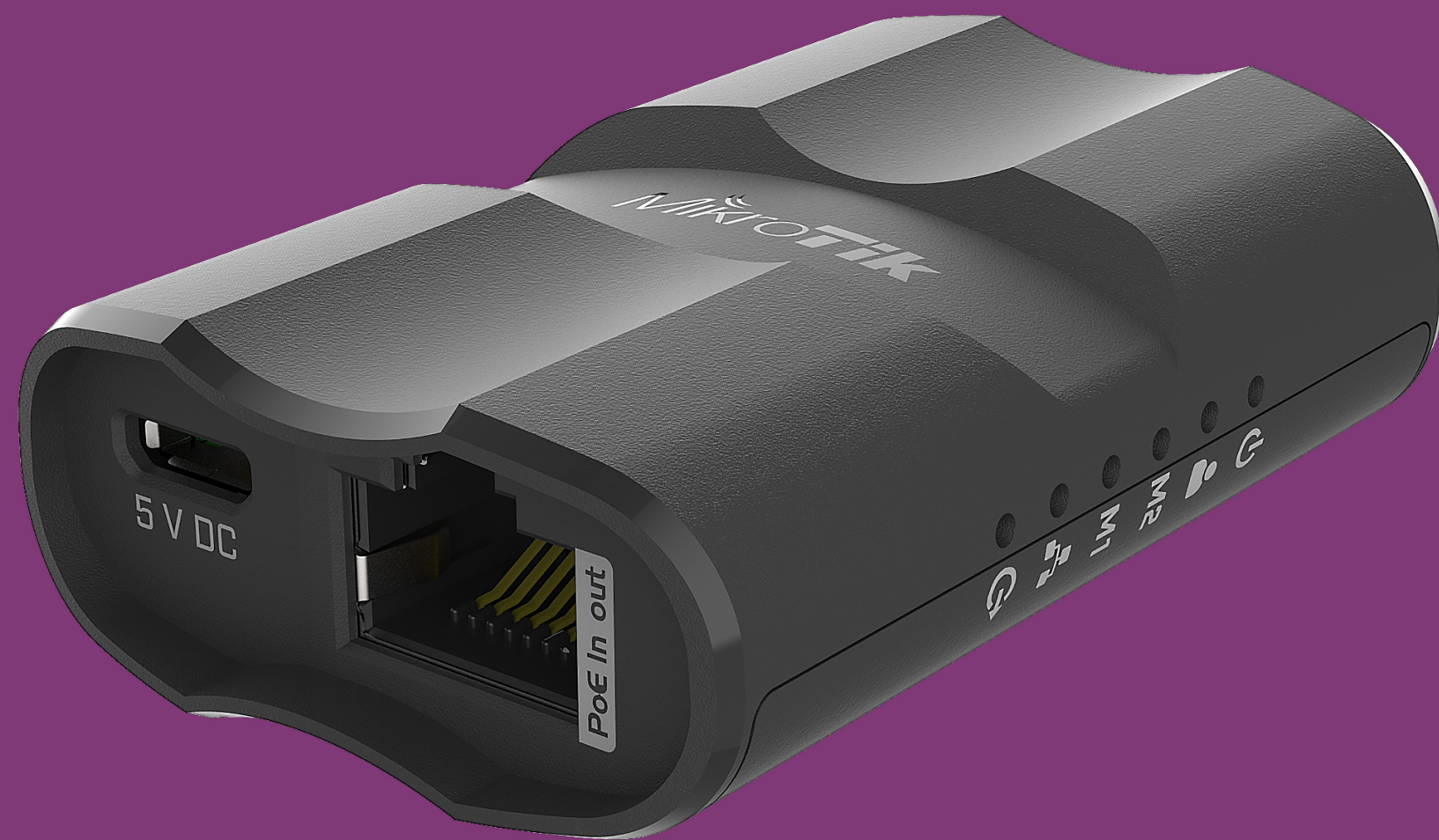
CENTRAL OFFICE



REGULAR NETWORK



MQS



- Mobile quick setup
- Administrators friend
- Manage Ethernet only devices from your phone over WiFi
- Can be powered from power bank
- Itself can power an SXT with PoE



LoRa

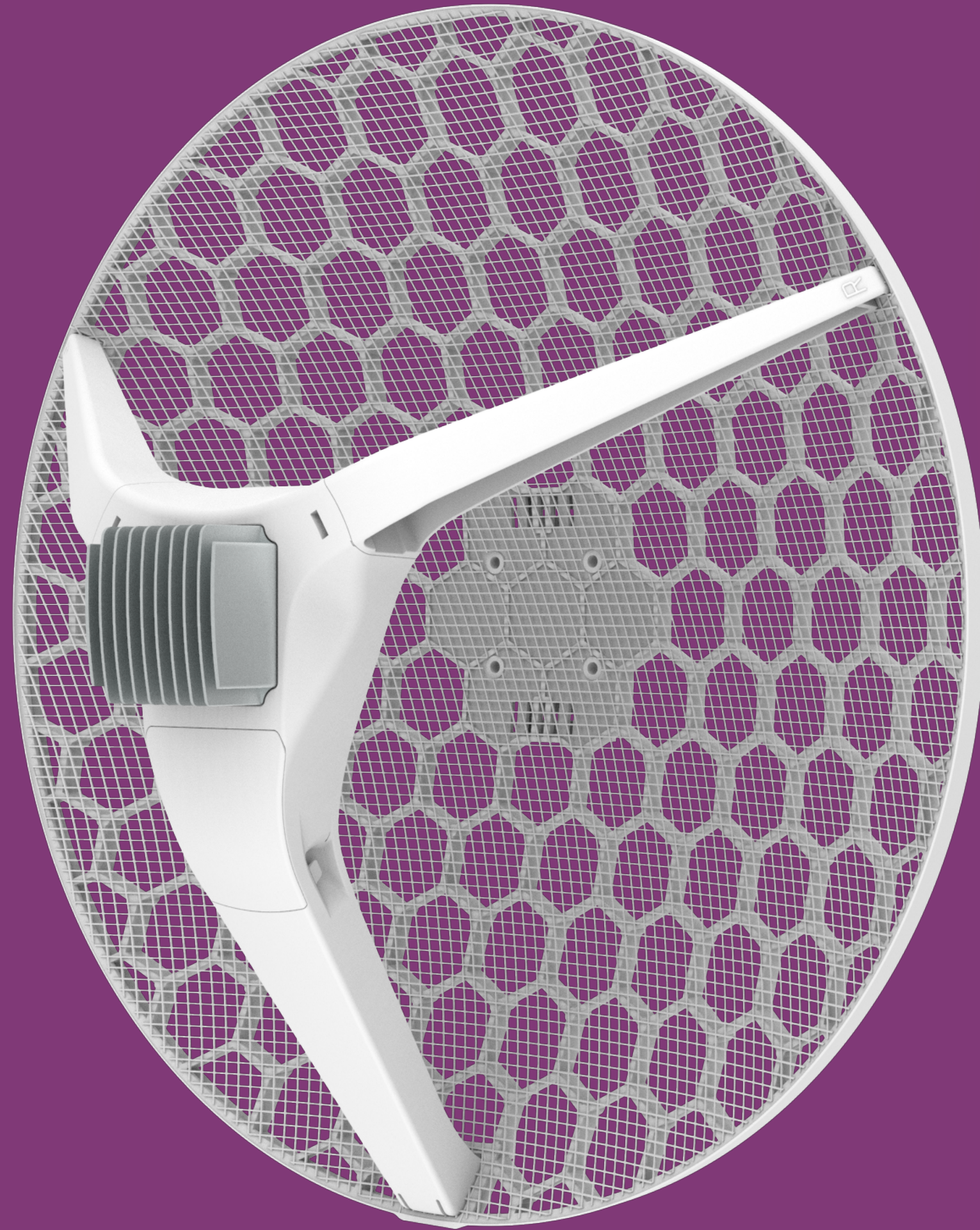
- wAP 2 GHz AP with LoRa gateway
- UDP packet forwarder to any public or private network server
- Integrated 2.5 dBi antenna with external antenna support
- LoRa mPCIe Gateway module available

mUPS pro



- Same form factor as mUPS
- 24 V/48 V battery support
- 24 V/48 V PoE out support
- Managed through web interface

LHG XL HP



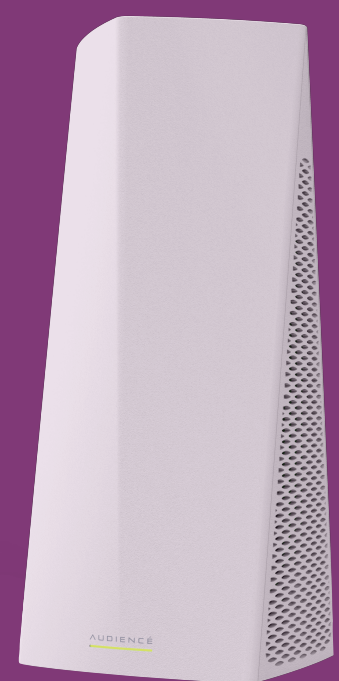
- Simultaneous dual band router
- Gigabit Ethernet and SFP
- Use for failover or higher throughput
- High gain and output power

PWR Line



- Add PowerLine function via microUSB
- Supported by new hAP lite & mini and mAP family devices
- Connect to PWR Line AP or other router over electrical line





Audience

- Tri-band 802.11ac home AP with mesh function
- Secondary 5 GHz interface pairs with other units
- Two Ethernet ports
- LTE model with SIM slot and CAT6 modem



Scan me



The background of the image is a stylized world map. The continents are outlined in a light purple color against a dark purple background. The map is overlaid with a grid of thin, light purple lines representing latitude and longitude. In the center of the map, the word "Microtik" is written in a white, sans-serif font. The "i" in "Microtik" is stylized with a dot that is a small circle. The "k" is also stylized with a horizontal bar that is slightly longer than the others. The logo is centered horizontally and vertically.

Microtik