



MikroTik User Meeting

MUM #72



MikroTik

- MikroTik is located in Latvia (Europe)
- More than 100 employees
- Established 1996
- RouterOS created in 1997
- RouterBOARD created in 2002
- First MUM in Prague 2006
- Biggest MUM in 2013, Indonesia - 1400 people



What we do

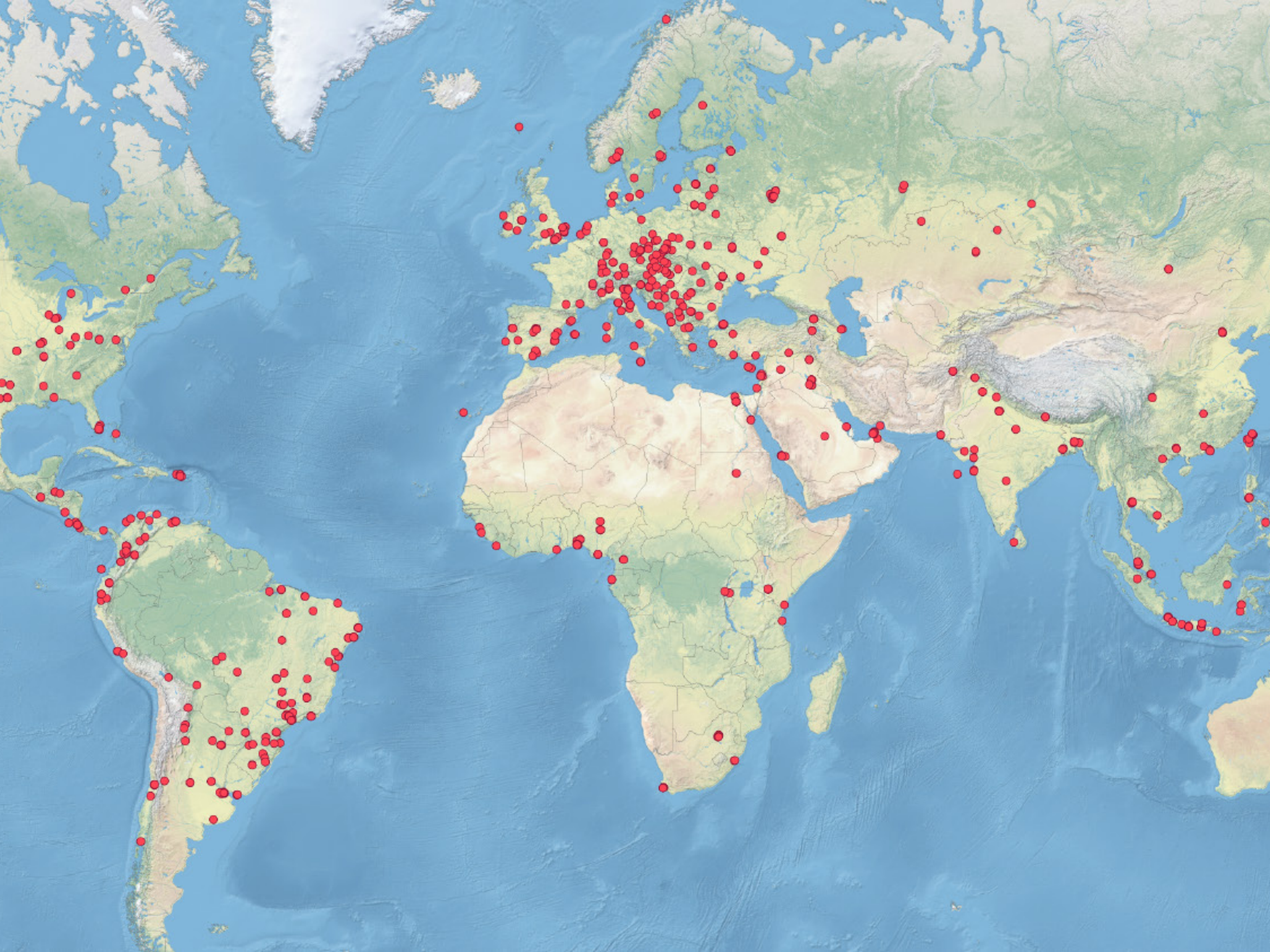
- MikroTik provides routing and wireless equipment for all possible uses: RouterBOARD, Cloud Core Router, Cloud Router Switch
- Our RouterOS software now supports most common and many special features

RouterOS

- MikroTik RouterOS is the operating system of RouterBOARD hardware
- Routing, firewall, bandwidth management, wireless access point, backhaul link, hotspot gateway, VPN server and more
- Stand-alone operating system based on the Linux v3.3.5 kernel

Why us

- Millions of RouterOS powered devices currently routing the world
- 18 years of developing networking software and hardware
- Over 20'000 RouterOS trained and certified network engineers



Why us

- More than 1600 training classes in the last year
- World wide network of certified consultants
- Offering products that support simple CPEs to complex enterprise networks
- Thousands of pages of documentation, examples, application notes, and guides

MikroTik at the MUM

- Jānis Jankovskis (Sales, Training)
- Normunds Rustanovičs (Support)
- Jānis Meģis (Training)
- Uldis Čerņevskis (Support)
- Arnis Riekstiņš (CTO)

Special thanks

r0c-n0c

www.roc-noc.com

Useful info

- Lunch with voucher only
- Lottery at the end of MUM

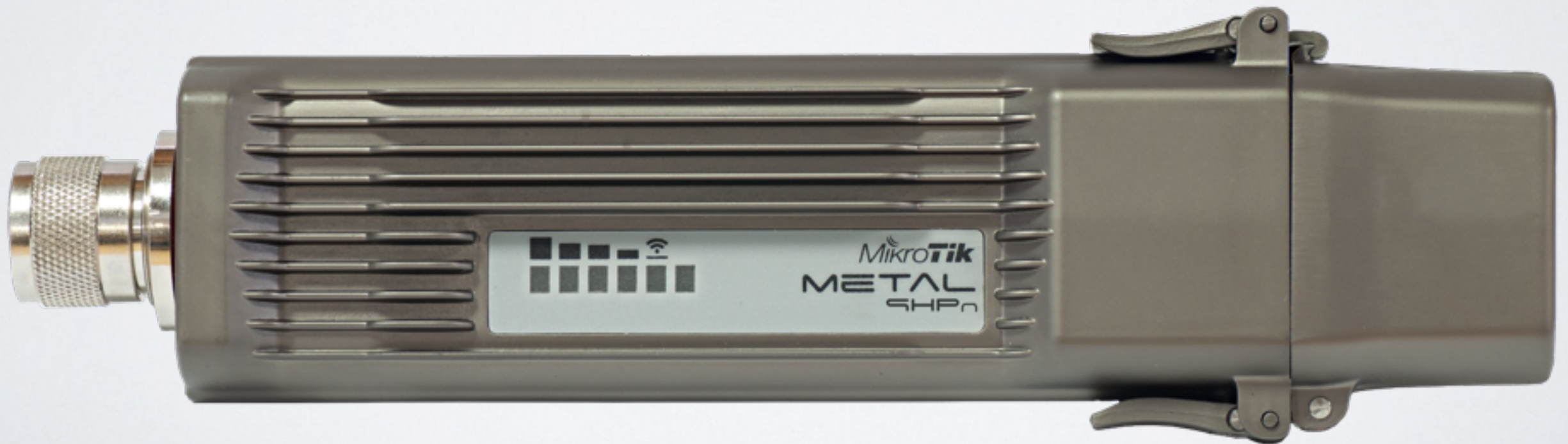
After the MUM

- Presentation slides - wiki.mikrotik.com
- Videos - tiktube.com
- License will be emailed

RECENTLY INTRODUCED

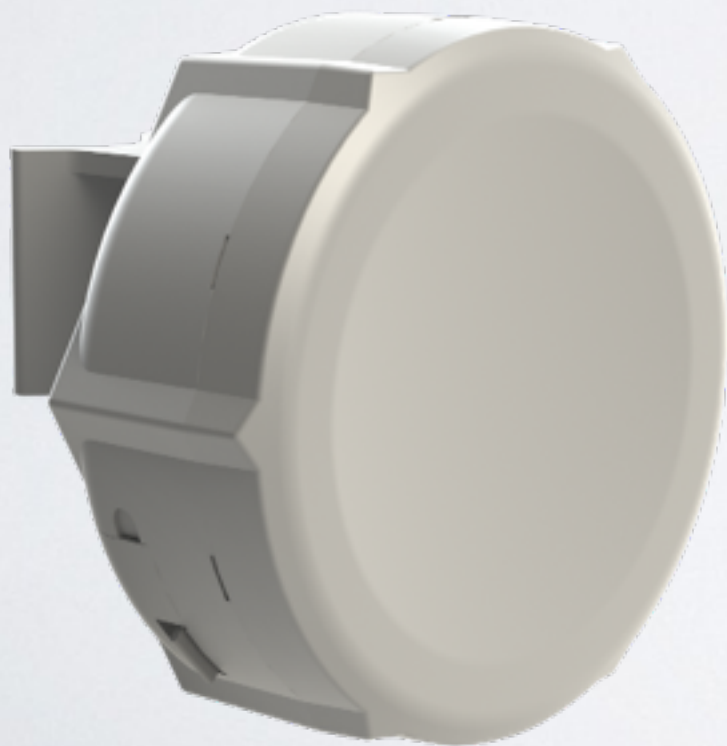
Metal 9

- 900MHz
- Tough outdoor
- Compatible only with another Metal 9



SXT ac

- Same looks
- Regular and Sector models
- 802.11ac delivers even 500Mbit real speed



Netbox

- Faster and more RAM than Basebox
- 802.11ac delivers even 500Mbit real speed
- No expansion options



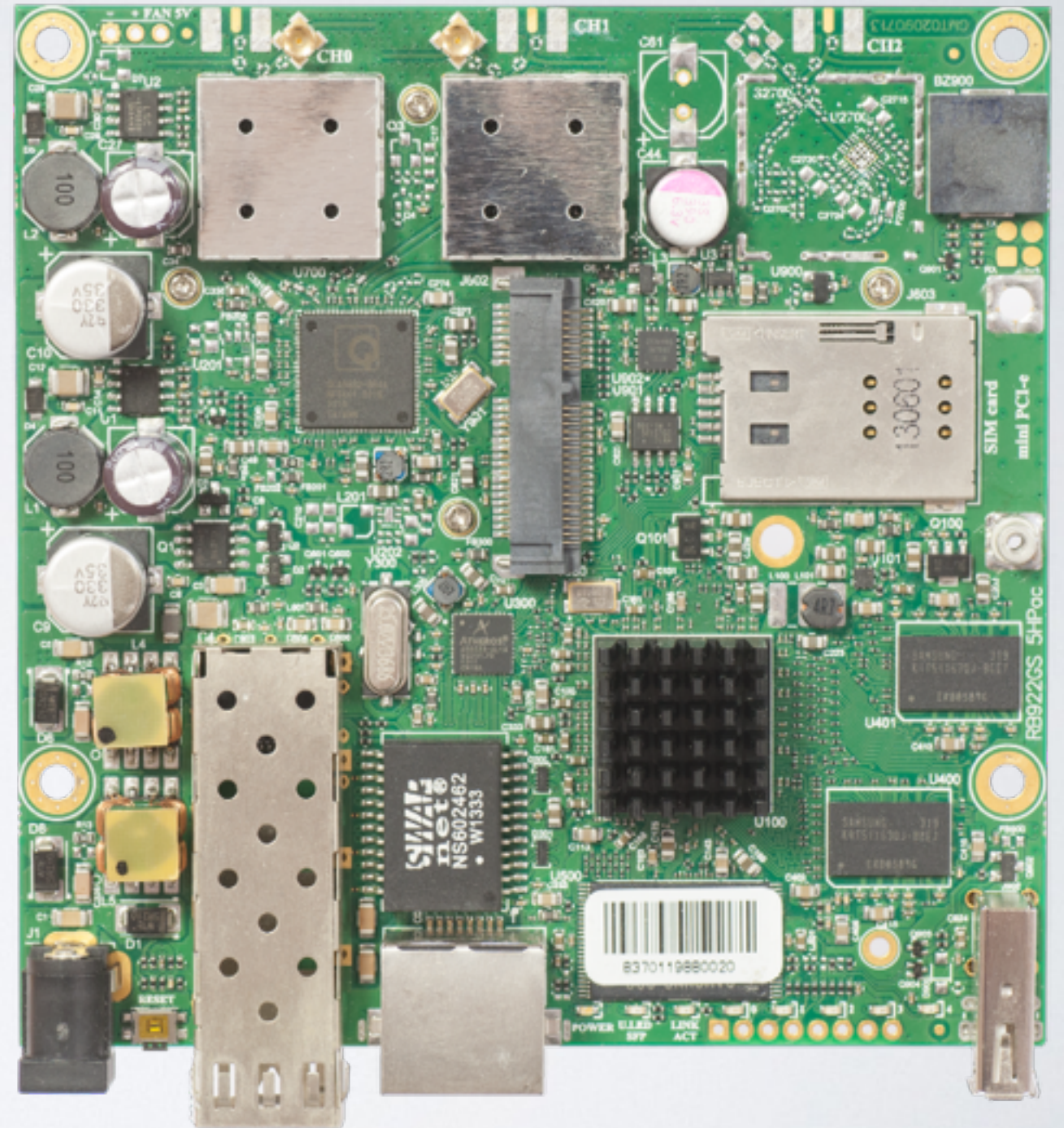
Netmetal

- Strong aluminium waterproof case
- Four models, 2 and 3 chain
- Up to 2W TX power
- 802.11ac



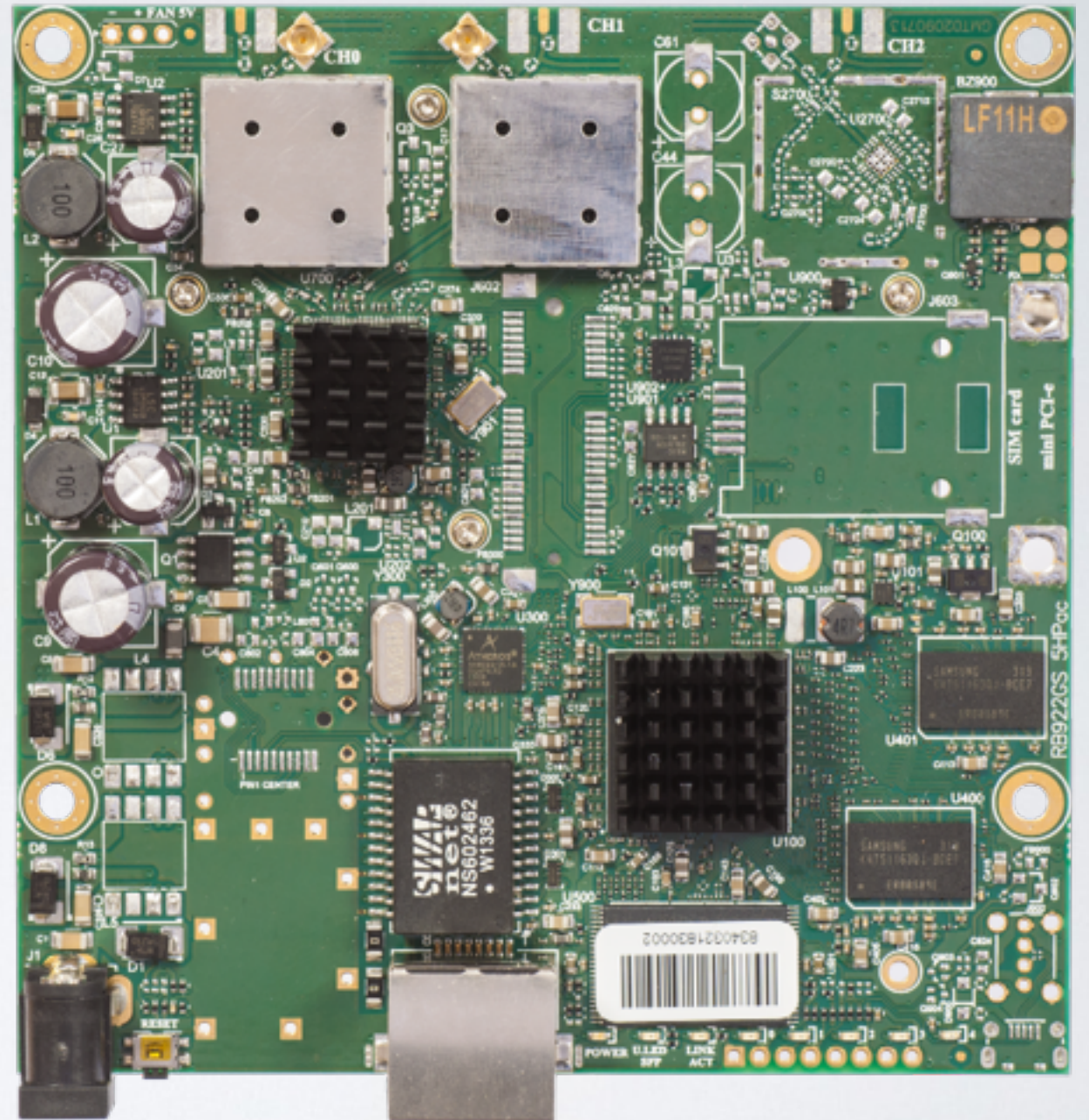
RB922

- 802.11ac
- AP mode
- SFP cage
- miniPCle + SIM
- USB
- Up to 1300mW



RB9 II

- 802.11ac
- CPE
- Up to 1300mW



mAP

- micro AP (or CPE)
- PoE injector 8-57V
- Built in 2GHz AP
- microUSB for modem, or for powering AP
- Any PoE in 802.3af and 802.3at
- Passive PoE output



CRS109

- 8 Gigabit Ethernet ports
- SFP and USB
- Built in wireless AP

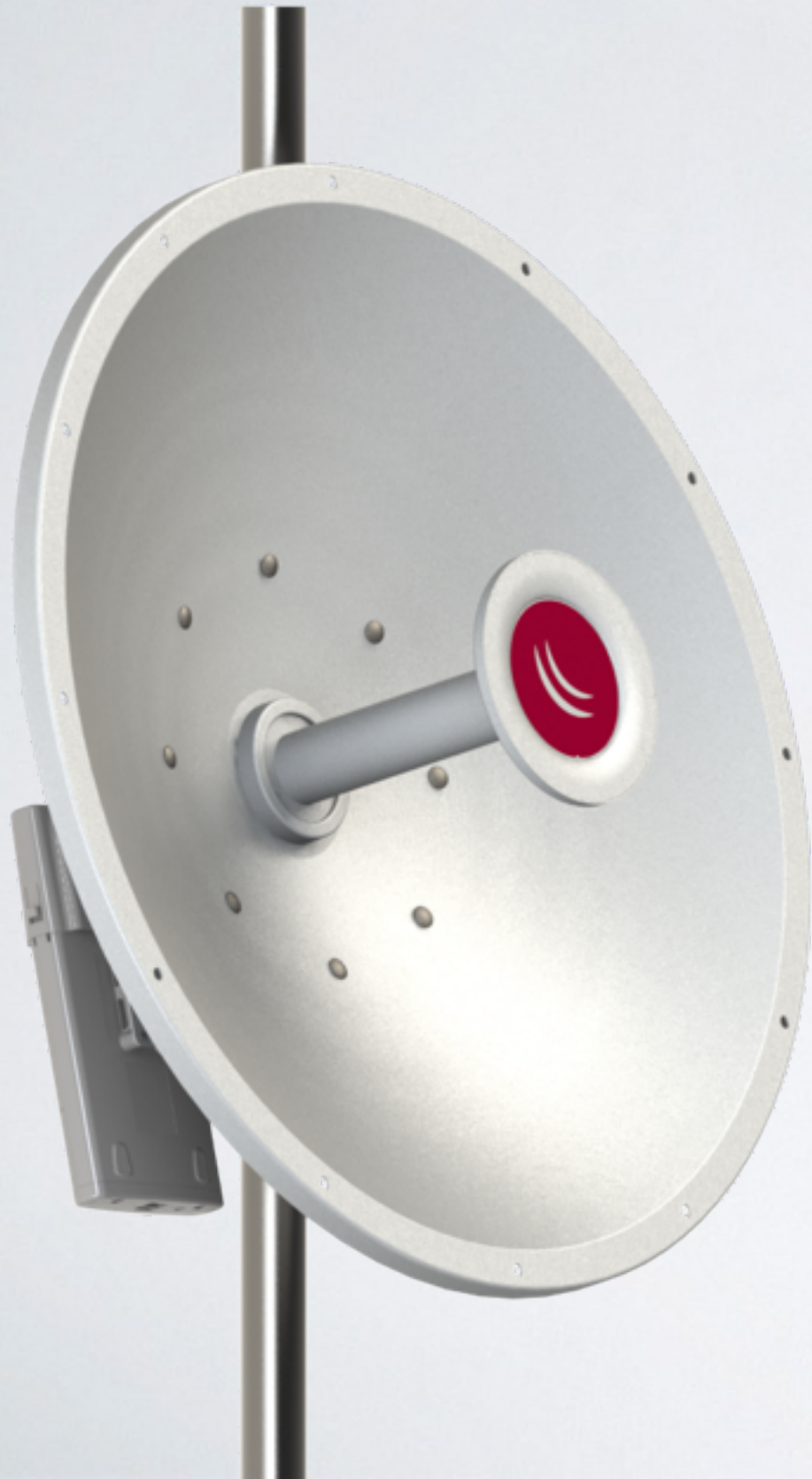


RII ac



- 802.11ac dual chain
- Works in any RouterBOARD with minPCle slot
- Upgrade your device to new high speed 802.11ac

MikroTik Antenna



- Parabolic dish
- Simple or Precise mounts
- Custom design
- \$119 and \$129



NEW PRODUCTS

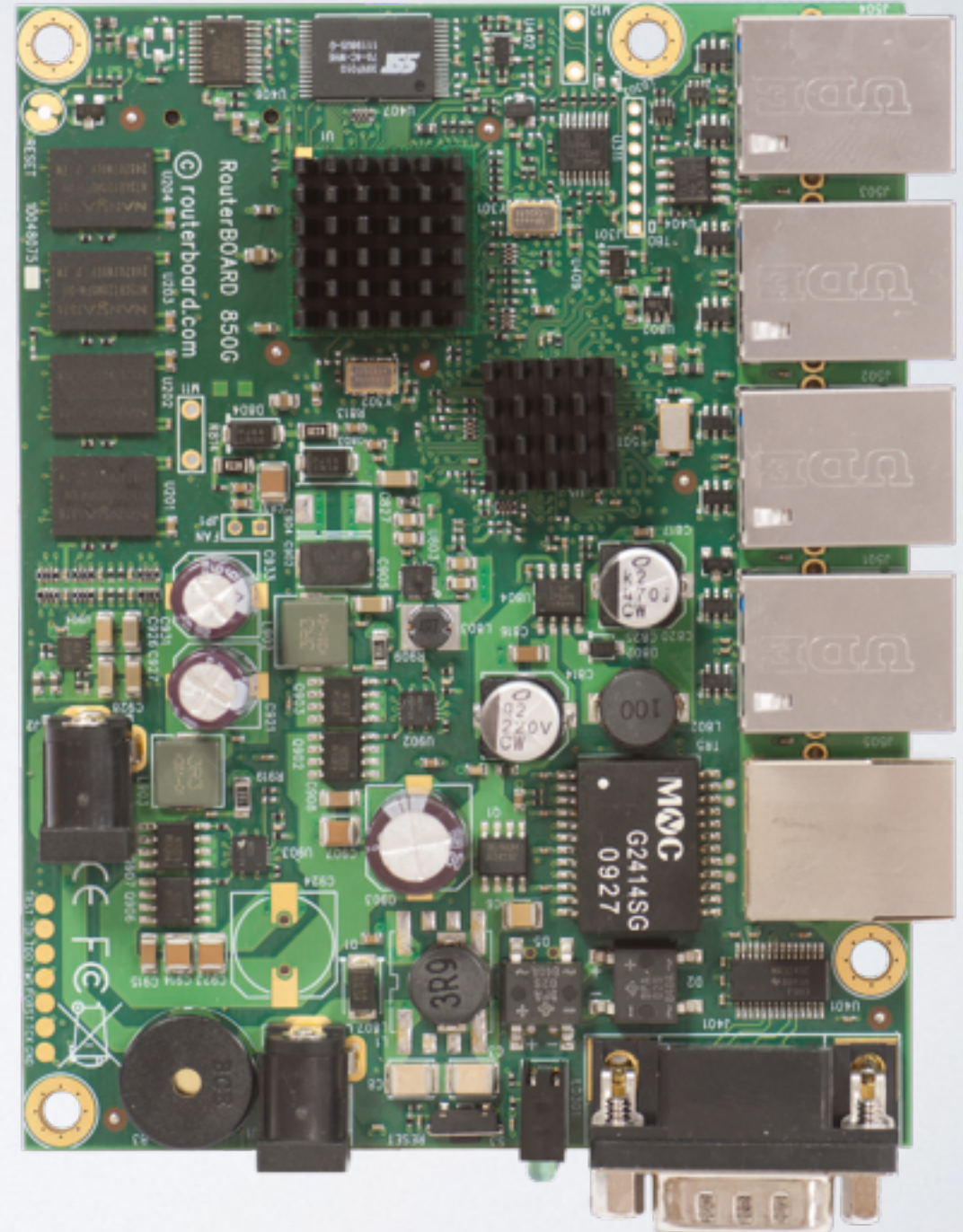
Radome cover for mANT parabolic dish



\$39

RB850Gx2

- Dual core PPC
- New 500MHz CPU
- Same size as RB450G
- 512MB RAM
- \$129
- End of september



cAP

- Ceiling AP
- low cost
- 802.11a/n
- Ready for CAPsMAN
- \$49.95, September



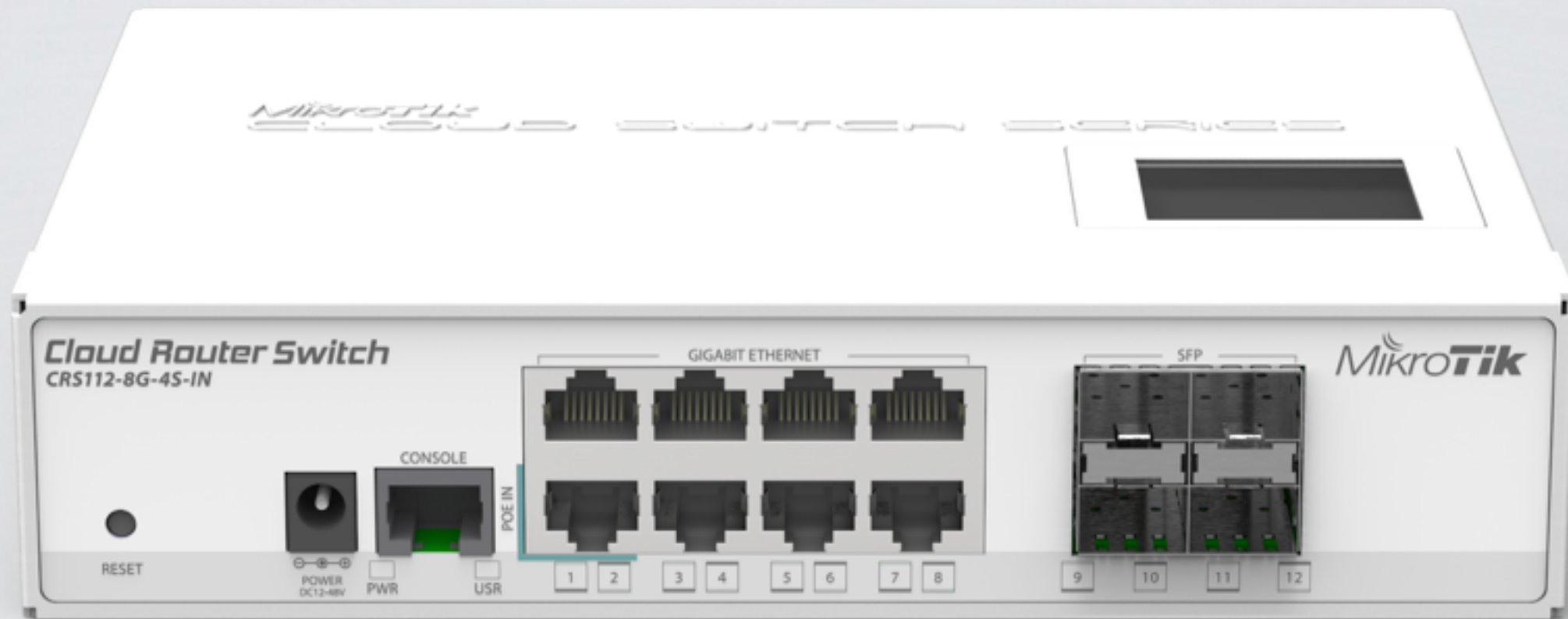
CRS 8 port series

CRS210-8G-2S+IN (8 Ethernet, 2 SFP+)



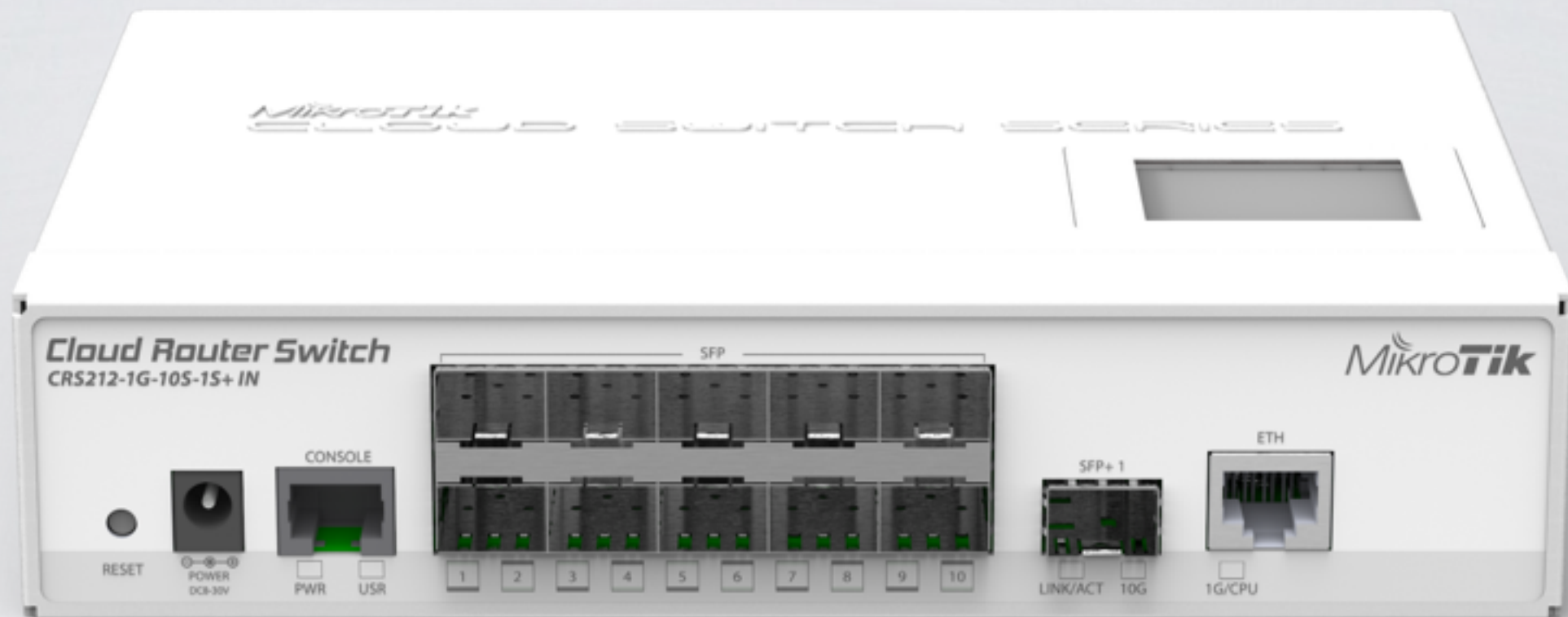
CRS112-8G-4S-IN

(8 Ethernet, 4 SFP)



CRS212-1G-10S-1S+

(1 Ethernet, 10 SFP, 1 SFP+)



New CRS 8 port series devices
Available in October

FTC

- Fiber to Copper converter
- 12-57V PoE with 802.3af/at support
- Outdoor waterproof case with lock screw
- -40C to +70C operating temperature
- \$39, September







CCR1072

CCR1072

- 72 core Tilera CPU
- Dual failover power supplies
- Smart card
- Eight SFP+ ports
- 1 RJ45 Gigabit port
- 16GB of built in ECC RAM
- Coming November



Enjoy the MUM!